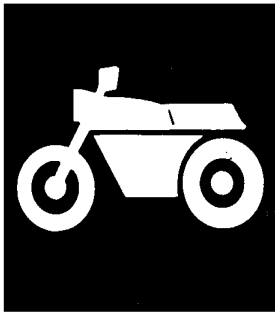


**YAMAHA**



**CATALOGO  
DE REPUESTOS  
PARTS  
CATALOGUE**

**CY50'94 (4MN1)** C & SOUTH AMERICA , S.AFRICA

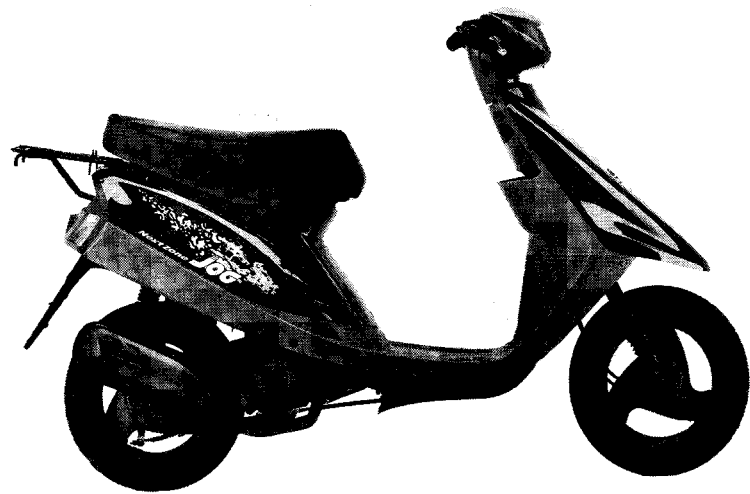
**CY50'94 (4MS1)** BRAZIL

**CY50'94 (4MT1)** COLOMBIA

---

144MN-200S1

**YAMAHA**  
**GENUINE**  
Parts & Accessories



A3

## FOREWORD

This Parts Catalogue is related to the parts for the model(s) in the below frame. When you are ordering replacement parts, please refer to this Parts Catalogue and quote both part numbers and part names correctly.

CY50'94 (4MN1,4MS1,4MT1)

1. Modifications or additions which have been made after issue of the Parts Catalogue will be announced in the Yamaha Parts News.  
It is advisable that you make necessary corrections to the Parts Catalogue according to the Yamaha Parts News.

**2. Abbreviations**

The following abbreviations are used in this Parts Catalogue.

- "UR" Use specified parts number.
- "UN" Use as many as needed.
- "AP" Alternate Parts
- "LM" Local Made (Parts need to be ordered locally)
- "F#" Frame No. (Applicable machine No.)

3. Parts, which are to be supplied in an assembly, are listed with a dot (.) in front of the part name as shown below.

**EXAMPLE**

- CARBURETOR ASSY
- . JET, PILOT
- . NOZZLE, MAIN

4. Number of component for assembly

The numeral appearing to the right of each component part indicates the quantity of parts for each assembly unit.

**EXAMPLE**

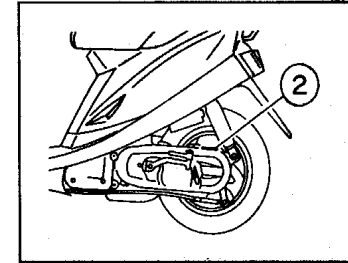
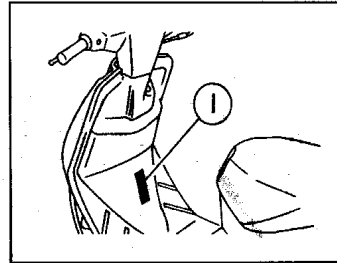
PART NO.	DESCRIPTION	Q'TY	REMARKS
2F5-83310-60	FRONT FLASHER LIGHT ASSY	2	
115-83311-60	. BULB (6V-18W)	1	

5. Applicable colors of graphics are represented in the "REMARKS" as shown below.

PART NO.	DESCRIPTION	Q'TY	REMARKS
2N4-24110-00-X5	FUEL TANK COMP.	1	MAXIM RED
3J1-24240-10	. GRAPHIC, FUEL TANK	1	for MXR

6. Applicable Serial No. and Color Code

<b>4MN1</b>	① Frame Serial No.	4MN-000101 ~	
	② Engine Serial No.	4MN-000101 ~	
<b>4MS1</b>	① Frame Serial No.	~	
	② Engine Serial No.	4MS-005101 ~	
<b>4MT1</b>	① Frame Serial No.	~	
	② Engine Serial No.	4MT-000101 ~	



Color Code	Color Name	Abbreviation
004B	BLACK 2	BL2
00GE	SILKY WHITE	SW
0121	VIVID RED COCKTAIL 1	VRC1

7. Note that the illustrations are for reference in finding parts numbers, not to be used for assembling. When assembling, please use the applicable service manual.
8. The asterisk (\*) before a reference number indicates modification items after the first edition.

## PROLOGO

Este Catálogo de Repuestos corresponde a las piezas para el(los) modelo(s) del recuadro siguiente. Al formular el pedido de repuestos, se ruega citar este Catálogo de Repuestos y especificar correctamente los números de parte y los nombres de parte.

CY50'94 (4MN1,4MS1,4MT1)

1. Las modificaciones y agregados que se hayan realizado después de la edición de este Catálogo de Repuestos, serán anunciados en las Informaciones de Recambios Yamaha.

2. Abreviaciones

En este Catálogo de Repuestos se emplean las siguientes abreviaciones.

- "UR" Usar el número de partes especificado
- "UN" Usar la cantidad necesaria
- "AP" Piezas sustitutivas
- "LM" Fabricación local (Partes necesarias que se pedirán localmente)
- "F#" No. de bastidor aplicable

3. Las piezas suministradas como conjunto se describen con un punto (.) que precede al nombre de la pieza como se indica a continuación.

EJEMPLO

CONJUNTO CARBURADOR

- . INYECTOR, piloto
- . BOQUILLA, principal

4. Cantidad de componentes de un conjunto

La numeración que aparece a la derecha de cada descripción, indica la cantidad de piezas por cada unidad de conjunto.

EJEMPLO

PIEZAS NO.	DESCRIPCION	CANT.	OBSERVACION
2F5-83310-60	ENSAMBLAJE DE LA LUZ	1	
115-83311-60	. BOMBILLA (6V-18W)	1	
1M1-83309-60	. REFLECTOR	1	

5. Los colores de los componentes se indican como sigue en la columna de "OBSERVACIONES".

EJEMPLO

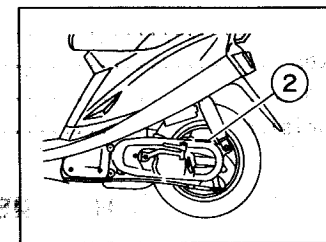
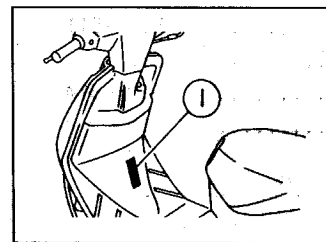
PIEZAS NO.	DESCRIPCION	CANT.	OBSERVACION
2N4-24110-00-X5	COMP. DEL TANQUE	1	ROJO MAXIM
3J1-24240-10	. GRAFICO, JUEGO DEL TANQUE	1	para MXR

6. Números de Serie y Códigos de Color aplicables

4MN1	① No. de Serie del bastidor	4MN-000101 ~
	② No. de Serie del motor	4MN-000101 ~

4MS1	① No. de Serie del bastidor	~
	② No. de Serie del motor	4MS-005101 ~

4MT1	① No. de Serie del bastidor	~
	② No. de Serie del motor	4MT-000101 ~



Código de Color	Nombre del Color	Abreviación
004B	BLACK 2	BL2
00GE	SILKY WHITE	SW
0121	VIVID RED COCKTAIL 1	VRC1

7. Debe tenerse en cuenta que las ilustraciones sirven como guía para la búsqueda de las referencias y no deben usarse para el montaje. Durante el montaje, se recomienda usar el manual de Taller correspondiente.

8. El asterisco (\*) antes del número de referencia indica los elementos modificados después de la primera edición.

# CONTENTS

## ENGINE

Cylinder .....	B2
Crankshaft, Piston .....	B3
Air Shroud, Fan .....	B4
Oil Pump .....	B5
Intake .....	B6
Carburetor .....	B7~B8
Exhaust .....	B9
Crankcase .....	B10~B11
Starter .....	B12
Clutch .....	B13~B14
Transmission .....	B15

Meter .....	D6
Headlight .....	D7
Taillight .....	D8
Handle Switch, Lever .....	D9
Electrical 1 .....	D10
Electrical 2 .....	D11

## INDEX

Numerical Index .....	M1~M2
-----------------------	-------

## CHASSIS

Frame .....	C2
Fender .....	C3~C4
Side Cover .....	C5
Oil Tank .....	C6
Rear Suspension .....	C7
Front Fork .....	C8
Fuel Tank .....	C9
Seat, Carrier .....	C10
Front Wheel .....	C11~C12
Rear Wheel .....	C13
Steering Handle, Cable .....	C14
Stand, Footrest .....	C15
Leg Shield .....	D2
Cowling 1 .....	D3
Generator .....	D4
Flasher Light .....	D5

# CONTENIDO

## MOTOR

CILINDRO .....	B2
CIGUENAL. PISTON .....	B3
CUBIERTA DE AIRE. VENTILADOR .....	B4
BOMBA DE ACEITE .....	B5
ADMISION .....	B6
CARBURADOR .....	B7~B8
DESCARGA .....	B9
CARTER .....	B10~B11
ARRANQUE .....	B12
EMBRAGUE .....	B13~B14
TRANSMISION .....	B15

## SHASIS

CUADRO .....	C2
GUARDABARRO .....	C3~C4
CUBIERTA LATERAL .....	C5
DEPOSITO DE ACEITE .....	C6
SUSPENSION TRASERO .....	C7
HORQUILLA DELANTERA .....	C8
DEPOSITO DE COMBUSTIBLE .....	C9
ASIENTO. PORTAEQUIPAJE .....	C10
RUEDA DELANTERA .....	C11~C12
RUEDA TRASERA .....	C13
MANUBRIO. CABLE .....	C14
SOPORTE. APOVAPIE .....	C15
PATA PROTEGIDA .....	D2
BOVEDA 1 .....	D3
GENERADOR .....	D4
LUZ DE DESTELLADOR .....	D5

MEDIDOR .....	D6
FARO DELANTERO .....	D7
LUZ DE COLA .....	D8
INTERRUPTOR DE MANIJA. PALANCA .....	D9
EQUIPO ELECTRICO 1 .....	D10
EQUIPO ELECTRICO 2 .....	D11

## INDICE

INDICE NUMERICO .....	M1~M2
-----------------------	-------

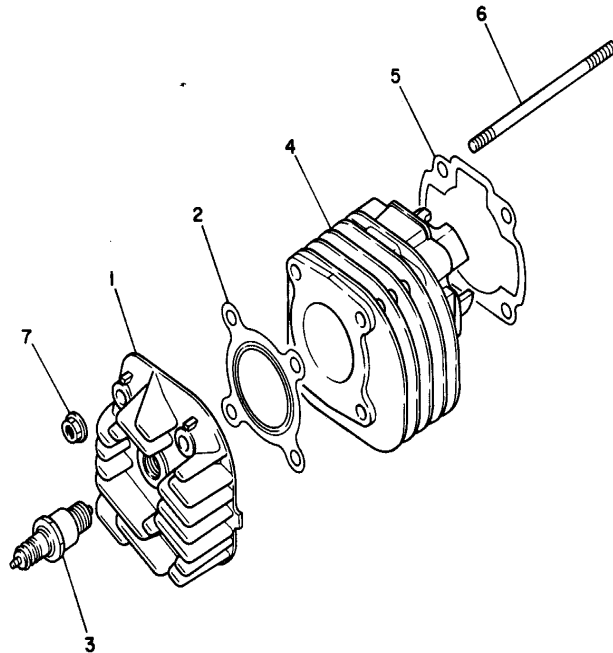


FIG. 1 CYLINDER

CILINDRO

REF. NO.	PART NO. CODIGO NO.	DESCRIPTION DESCRIPCION	Q'TY CANT.	REMARKS OBSERVACION
1	3KJ-11111-10	HEAD, CYLINDER 1 CULATA CILINDRO 1	1	
2	3KJ-11181-00	GASKET, CYLINDER HEAD 1 JUNTA, DE CULATA 1	1	
3	94701-00227	PLUG, SPARK (NGK BPR7HS) BUJIA	1	
4	3KJ-11311-10	CYLINDER 1 CILINDRO 1	1	
5	4FB-11351-00	GASKET, CYLINDER JUNTA, DE CILINDRO	1	
6	90116-07353	BOLT, STUD ESPARRAGO	4	
7	90179-07381	NUT TUERCA	4	



3KJ1010-9010

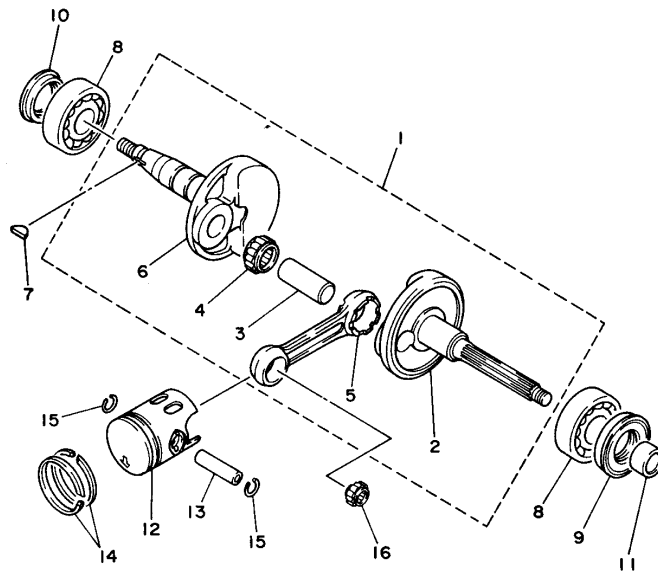


FIG. 2 CRANKSHAFT. PISTON CIGUENAL. PISTON

REF. NO.	PART NO. CODIGO NO.	DESCRIPTION DESCRIPCION	Q'TY CANT.	REMARKS OBSERVACION
1	3KJ-11400-00	CRANKSHAFT ASSY CIGUENAL COMPLETO	1	
2	3KJ-11412-00	.CRANK 1 .MANIVELA 1	1	
3	1YU-11681-00	.PIN, CRANK 1 .PASADOR MANIVELA 1	1	
4	93310-416N7	.BEARING, CYLINDRICAL .COJINETE DE RODILLOS	1	
5	2E9-11651-00	.ROD, CONNECTING .BIELA	1	
6	3KJ-11422-00	.CRANK 2 .MANIVELA 2	1	
7	90280-03017	KEY, WOODRUFF CUNA WOODRUFF	1	
8	93306-20458	BEARING COJINETE	2	
9	93102-20371	OIL SEAL RETEN DE ACEITE	1	
10	93101-20138	OIL SEAL RETEN DE ACEITE	1	
11	90387-156U0	COLLAR CASQUILLO CON VALONA	1	
12	3CP-11631-00-96	PISTON (STD)	1	
	3CP-11636-00	PISTON (0.50MM O/S)	1	AP
13	27V-11633-00	PISTON (0.50MM O/S)	1	
14	260-11601-02	PISTON RING SET (STD) JUEGO DE AROS (NORMA)	1	
	260-11601-22	PISTON RING SET (0.50MM O/S) JUEGO DE AROS (0.50MM O/S)	1	AP
15	93450-11120	CIRCLIP SEGURO	2	
16	93310-210M0	BEARING, CYLINDRICAL COJINETE DE RODILLOS	1	



3KJ1010-9020

B3



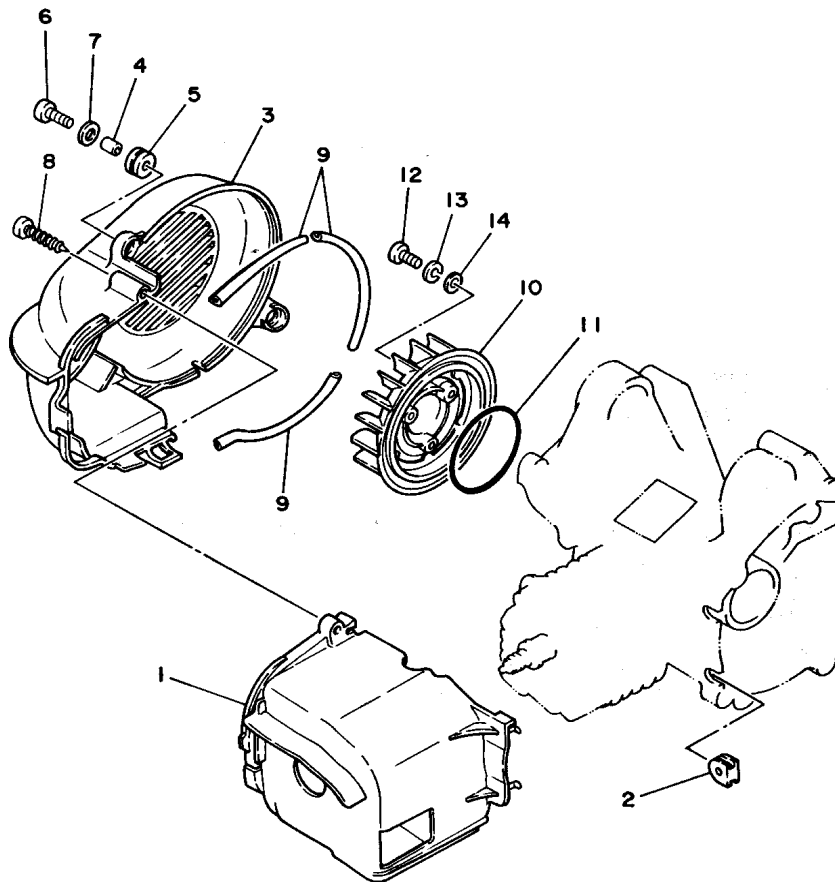


FIG. 3 AIR SHROUD. FAN

CUBIERTA DE AIRE. VENTILADOR

REF. NO.	PART NO. CODIGO NO.	DESCRIPTION DESCRIPCION	Q'TY CANT.	REMARKS OBSERVACION
1	3KJ-12651-11	AIR SHROUD, CYLINDER 1 CUBIERTA DE PASO DE AIRE 1	1	
2	90480-10468	GROMMET TAPON	2	
3	3YJ-12653-00	AIR SHROUD, CYLINDER 3 CUBIERTA DE PASO DE AIRE 3	1	
4	90387-067V1	COLLAR CASQUILLO CON VALONA	2	
5	90480-12497	GROMMET TAPON	2	
6	98507-06020	SCREW, PAN HEAD TORNILLO DE CABEZA CON PLANA	2	
7	92907-06600	WASHER ARANDELA	2	
8	97707-60540	SCREW, TAPPING TORNILLO ROSCA HEMBRA	1	
9	4FW-12658-00	DAMPER, AIR SHROUD 1 AMORTIGUADOR DE CUBIERTA 1	3	
10	3KJ-12611-00	FAN VENTILADOR	1	
11	93210-65752	O-RING JUNTA TORICA	1	
12	98507-06016	SCREW, PAN HEAD TORNILLO DE CABEZA CON PLANA	3	
13	92907-06100	WASHER ARANDELA	3	
14	92907-06600	WASHER ARANDELA	3	



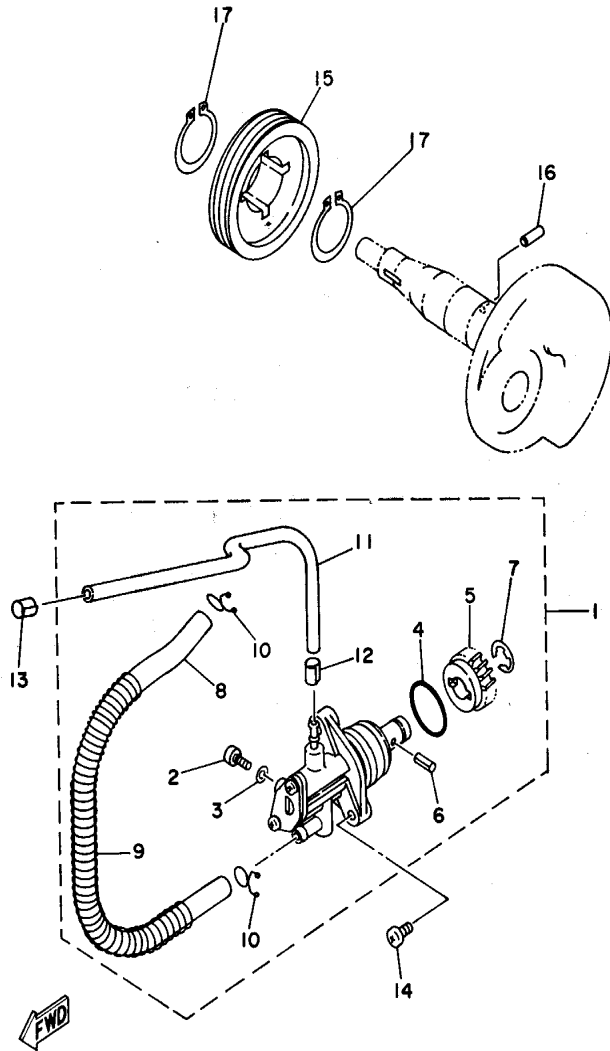
3KJ1010-9030

**B4**

FIG. 4 OIL PUMP

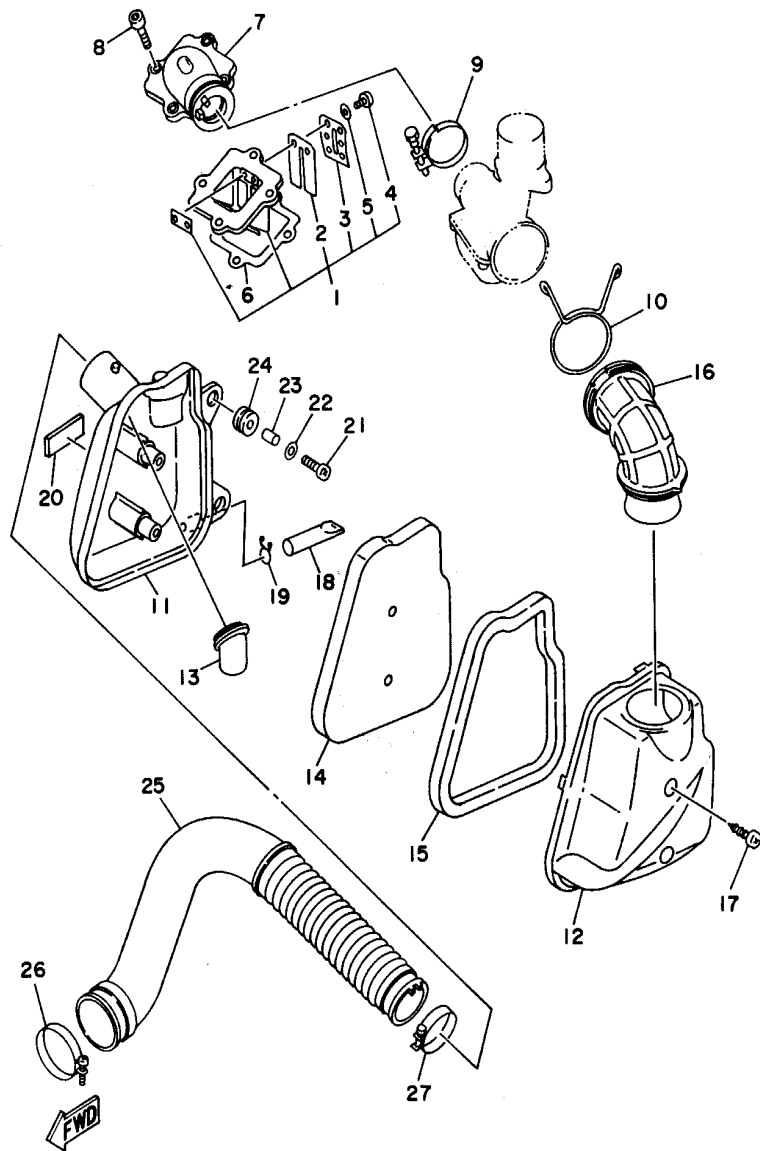
BOMBA DE ACEITE

REF. NO.	PART NO. CODIGO NO.	DESCRIPTION DESCRIPCION	Q'TY CANT.	REMARKS OBSERVACION
1	4MN-13100-00	OIL PUMP ASSY BOMBA DE ACEITE COMPLETA	1	
2	3WF-13185-00	.BOLT, BREATHER .PERNO DE RESPIRADERO	1	
3	1YU-13187-00	.GASKET, BREATHER BOLT .EMPAQUE TORNILLO P/RESPIRADER	1	
4	1YU-13473-00	.O-RING .ANILLO O	1	
5	3AA-13124-00	.GEAR WORM WHEEL (40T) .ENGREJE ROSCA SINFIN (40T)	1	
6	1YU-13516-00	.PIN, DOWEL .PASADOR, DE ESPIGA	1	
7	1YU-13577-00	.CLIP .PRESILLA	1	
8	90445-09252	.HOSE .TUBO	1	
9	90501-08430	.SPRING, COMPRESSION .RESORTE DE COMPRESION	1	
10	90467-08003	.CLIP .PRESILLA	2	
11	90445-05264	.HOSE .TUBO	1	
12	90468-02033	.CLIP .PRESILLA	1	
13	90468-02033	.CLIP .PRESILLA	1	
14	98507-05014	SCREW, PAN HEAD TORNILLO DE CABEZA CON PLANA	2	
15	2GM-13178-00	GEAR, PUMP-DRIVE ENGRANAJE TRACC.DE BOMBA	1	
16	93603-12007	PIN, DOWEL PASADOR DE CLAVIJA	1	
17	99009-19400	CIRCLIP PRESILLA REDONDA	2	



4MN1200-4040

B5



4MN1200-4050

FIG. 5 INTAKE

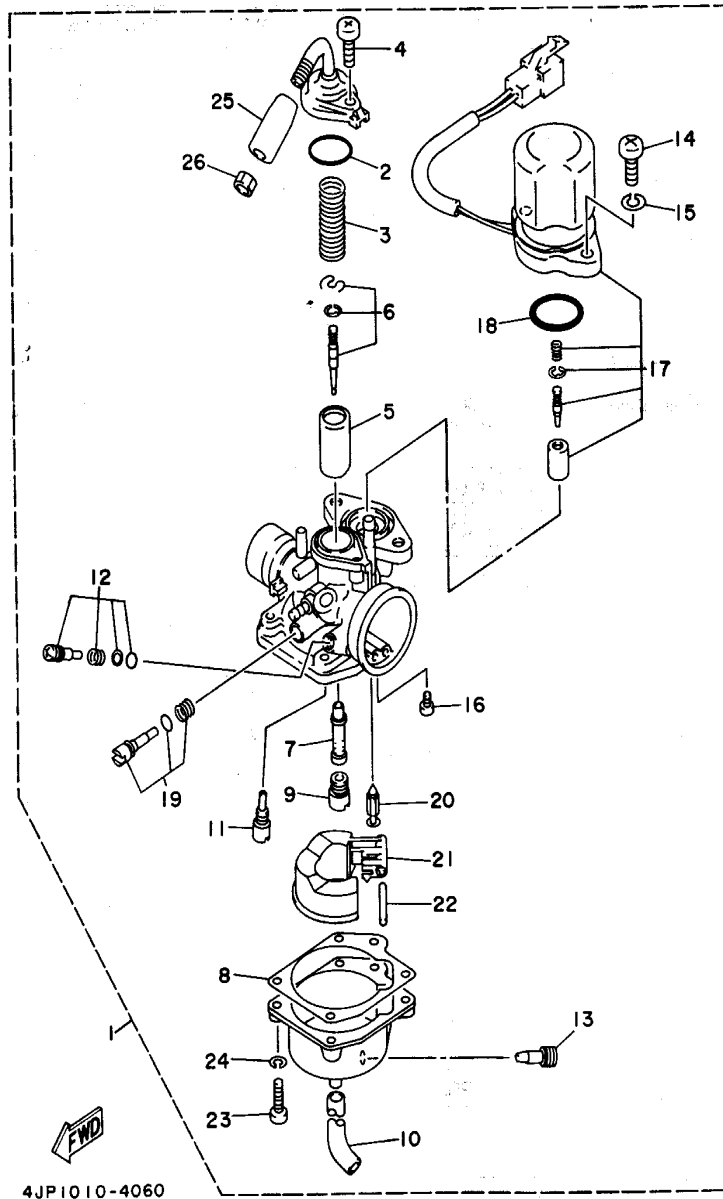
ADMISION

REF. NO.	PART NO. CODIGO NO.	DESCRIPTION DESCRIPCION	Q'TY CANT.	REMARKS OBSERVACION
1	3KJ-13610-00	REED VALVE ASSY VALVULA DE LAMINAS COMPLETA	1	
2	3KJ-13613-00	REED, VALVE VALVULA DE LAMINAS	2	
3	3KJ-13616-00	STOPPER, REED VALVE TOPE DE VALVULA DE LAMINAS	2	
4	98507-03008	SCREW, PAN HEAD TORNILLO DE CABEZA CON PLANA	4	
5	92907-03600	WASHER ARANDELA	4	
6	4FB-13621-00	GASKET, VALVE SEAT JUNTA, DE VALV. DE LAMINAS	1	
7	4FK-13555-00	MANIFOLD, INTAKE CONECTOR	1	
8	91316-06020	BOLT TORNILLO ALLEN	4	
9	90460-32242	CLAMP, HOSE BRIDA, DE UNION	1	
10	90467-24140	CLIP PRESILLA	1	
11	4MN-14411-00	CASE, AIR CLEANER 1 CAJA FILTRO DEL AIRE 1	1	
12	4MN-14412-00	CAP, CLEANER CASE 1 TAPA CAJA DEL FILTRO 1	1	
13	4MN-14437-00	DUCT CONDUCTO	1	
14	4MN-14451-00	ELEMENT, AIR CLEANER ELEMENTO DEL FILTRO DEL AIRE	1	
15	4MN-14452-00	SEAL SELLO	1	
16	3YJ-14453-00	JOINT, AIR CLEANER 1 UNION DEL FILTRO DEL AIRE 1	1	
17	97707-50125	SCREW, TAPPING TORNILLO ROSCA HEMBRA	2	
18	34X-1443E-00	PIPE, DRAIN TUBO, DRENAJE	1	
19	90467-11106	CLIP PRESILLA	1	
20	3XV-21717-00	DAMPER, SIDE COVER AMORTIGUADOR DE CUBIERTA LAT.	1	
21	98507-06020	SCREW, PAN HEAD TORNILLO DE CABEZA CON PLANA	2	
22	92907-06600	WASHER ARANDELA	2	
23	90387-067V1	COLLAR CASQUILLO CON VALONA	2	
24	90480-12497	GROMMET TAPON	2	
25	4MN-21557-00	DUCT, AIR PINON CONTROL	1	
26	90460-41191	CLAMP, HOSE BRIDA, DE UNION	1	
27	90460-33087	CLAMP, HOSE BRIDA, DE UNION	1	

B6

FIG. 6 CARBURETOR

CARBURADOR



REF. NO.	PART NO. CODIGO NO.	DESCRIPTION DESCRIPCION	Q'TY CANT.	REMARKS OBSERVACION
1	4MN-14301-00	CARBURETOR ASSY 1	1	
	4MS-14301-10	CARBURADOR COMPLETO 1		
	4MS-14301-10	CARBURETOR ASSY 1	1	PARA BRAZIL
	4MS-14301-10	CARBURADOR COMPLETO 1		
2	4JP-14561-00	.O-RING	1	
		.ANILLO O		
3	1YU-14331-00	.SPRING, THROTTLE VALVE	1	
		.RESORTE VALVULA ACELERADOR		
4	98580-05014	.SCREW, PAN HEAD	1	
		.TORNILLO DE CABEZA CRUZADA		
5	3KJ-14312-25	.VALVE, THROTTLE 1	1	
		.VALVULA DE OBTURADOR 1		
6	4MN-1490J-00	.NEEDLE SET	1	
		.CJTO. AGUJA		
	3KJ-1490J-10	.NEEDLE SET	1	PARA BRAZIL
		.CJTO. AGUJA		
7	3VR-14341-00	.NOZZLE, MAIN	1	
		.BOQUILLA PRINCIPAL		
	14T-14341-00	.NOZZLE, MAIN	1	PARA BRAZIL
		.BOQUILLA PRINCIPAL		
8	14T-14384-00	.GASKET, FLOAT CHAMBER	1	
		.EMPAQUE DE CAMARA DE BOIA		
9	14T-14343-33	.JET, MAIN (# 66)	1	
		.INYECTOR PRINCIPAL (# 66)		
	14T-14343-38	.JET, MAIN (# 76)	1	PARA BRAZIL
		.INYECTOR PRINCIPAL (# 76)		
10	3KJ-14349-01	.PIPE	1	
		.TUBO		
11	3KJ-14353-22	.JET, PILOT (# 44)	1	
		.INYECTOR DE PILOTO (# 44)		
	3KJ-14353-21	.JET, PILOT (# 42)	1	PARA BRAZIL
		.INYECTOR DE PILOTO (# 42)		
12	4JP-14104-00	.AIR SCREW SET	1	
		.CJTO. TORNILLO DE AIRE		
13	14T-14323-00	.SCREW	1	
		.CJTO		
14	98580-06016	.SCREW, PAN HEAD	2	
		.TORNILLO DE CABEZA CRUZADA		
15	92995-06100	.WASHER, SPRING	2	
		.ARANDELA		
16	98580-03006	.SCREW, PAN HEAD	1	
		.TORNILLO DE CABEZA CRUZADA		
17	4MN-1410A-00	.STARTER SET	1	
		.JUEGO DE ARRANQUE		
	3KJ-1410A-10	.STARTER SET	1	PARA BRAZIL
		.JUEGO DE ARRANQUE		
18	1HV-14147-00	.O-RING	1	
		.ANILLO O		
19	3YJ-14103-00	.THROTTLE SCREW SET	1	
		.CJTO. TORNILLO DEL RALENTI		
20	4GF-14392-00	.VALVE, NEEDLE	1	
		.VALVULA DE AGUJA		
21	1HV-14385-01	.FLOAT	1	
		.BOIA		
22	367-14386-00	.PIN, FLOAT	1	
		.PASADOR DE BOIA		

B7

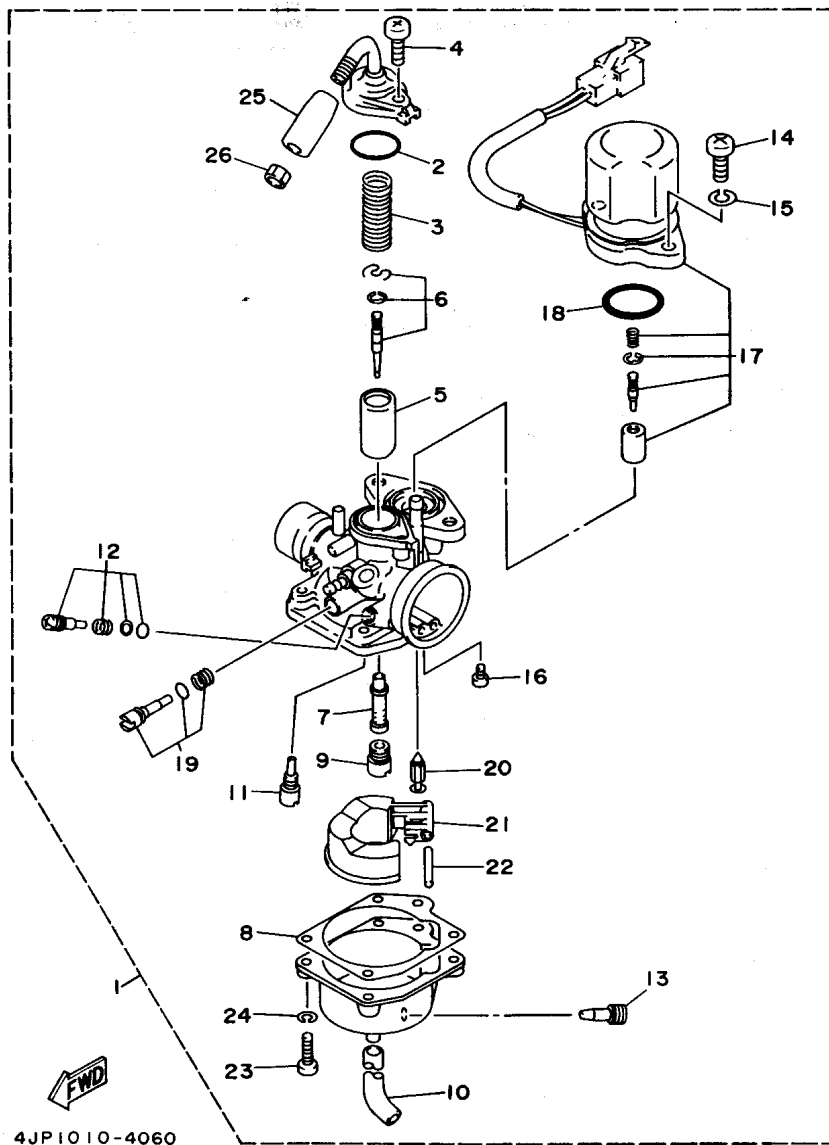
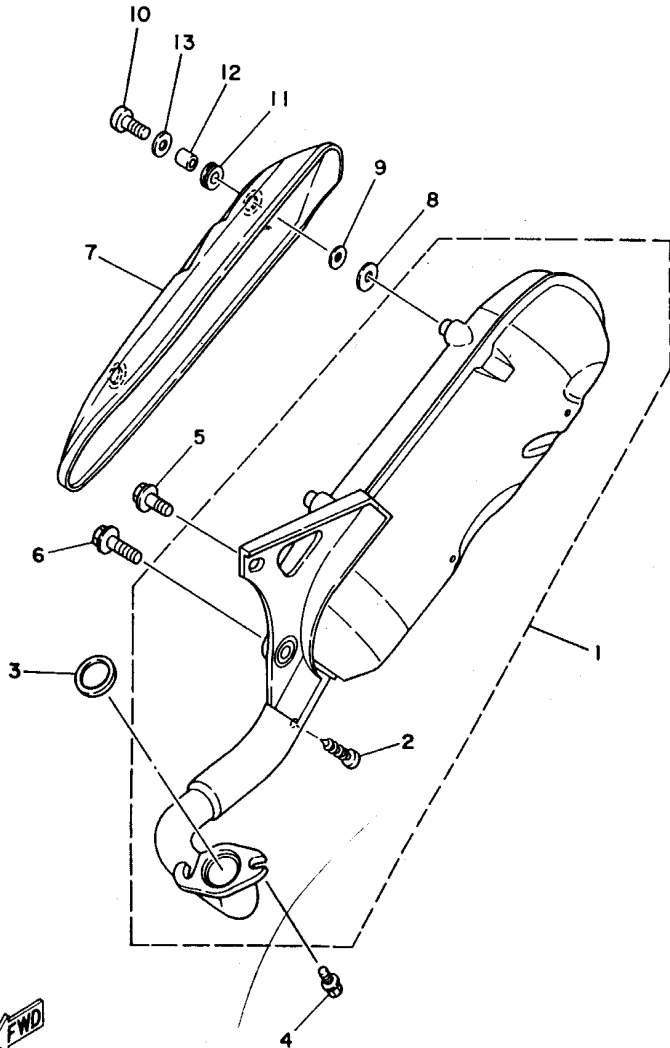


FIG. 6 CARBURETOR

CARBURADOR

REF. NO.	PART NO. CODIGO NO.	DESCRIPTION DESCRIPCION	Q'TY CANT.	REMARKS OBSERVACION
23	98580-04016	.SCREW, PAN HEAD .TORNILLO DE CABEZA CRUZADA	4	
24	92901-04100	.WASHER, SPRING .ARANDELA PLANA	4	
25	3KJ-26329-00	.CAP, RUBBER .TAPA DE ANILLO PROTECTOR	1	
26	288-14161-00	.NUT, CABLE ADJUSTING .TUERCA AJUSTADOR DE CABLE	1	

B8



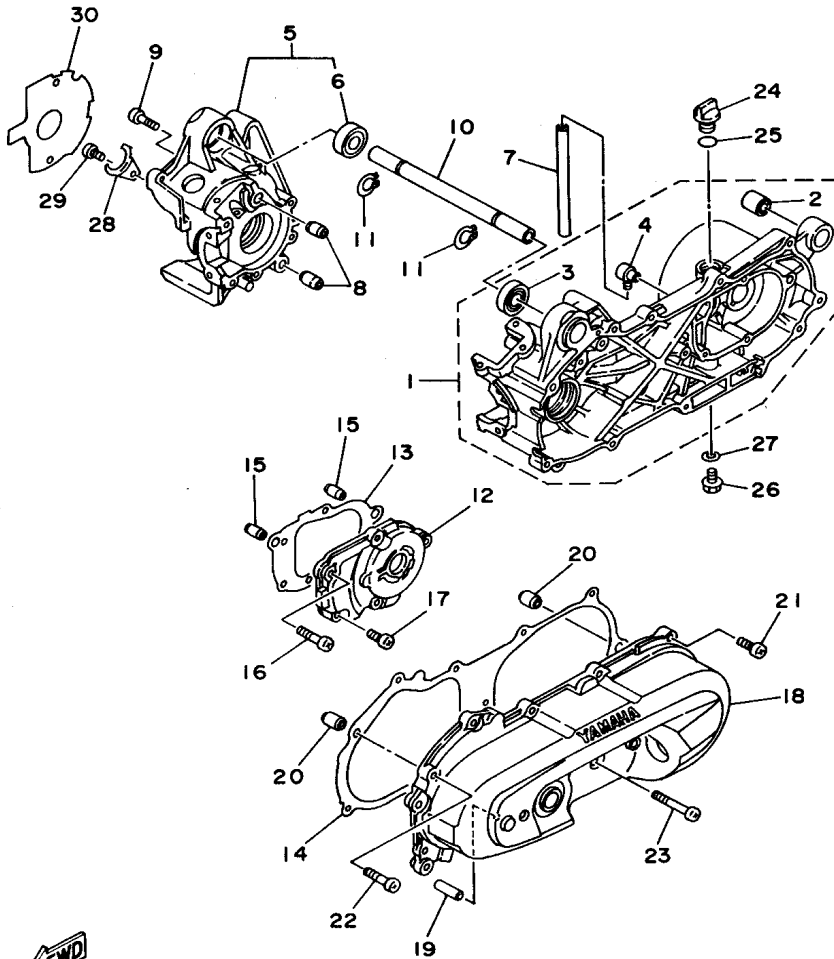
3KJ1010-9070

FIG. 7 EXHAUST

DESCARGA

REF. NO.	PART NO. CODIGO NO.	DESCRIPTION DESCRIPCION	Q'TY CANT.	REMARKS OBSERVACION
1	3KJ-14610-12	EXHAUST PIPE ASSY 1 TUBO DE ESCAPE COMPLETO 1	1	
2	97707-30605	.SCREW, TAPPING .TORNILLO ROSCA HEMBRA	1	
3	3HK-14613-00	GASKET, EXHAUST PIPE JUNTA, TUBO DE ESCAPE	1	
4	90153-06061	SCREW, HEXAGON TORNILLO HEXAGONAL	2	
5	95817-08020	BOLT, FLANGE TUERCA DE REBORDE	1	
6	95817-08030	BOLT, FLANGE TUERCA DE REBORDE	1	
7	3VR-14718-00	PROTECTOR, MUFFLER 1 PROTECTOR DE SILENCIADOR 1	1	
8	3HK-14766-01	WASHER, PROTECTOR ARANDELA DE PROTECTOR	2	
9	92907-06200	WASHER ARANDELA	2	
10	98907-06016	SCREW, BIND TORNILLO DE LIGAR	2	
11	90480-12237	GROMMET TAPON	2	
12	90387-06067	COLLAR CASQUILLO CON VALONA	2	
13	4FB-14766-00	WASHER, PROTECTOR ARANDELA DE PROTECTOR	2	

B9



4MN1200-4080

FIG. 8 CRANKCASE

CARTER

REF. NO.	PART NO. CODIGO NO.	DESCRIPTION DESCRIPCION	Q'TY CANT.	REMARKS OBSERVACION
1	3KJ-15110-01	CRANKCASE ASSY 1 CARTER COMPLETO 1	1	
2	164-22216-00	.BUSH, REAR SHOCK ABSORBER .BUJE DEL AMORTIGUADOR TRASERO	1	
3	93306-00316	.BEARING .COJINETE	1	
4	3YJ-15371-00	.BREATHER .RESPIRADERO	1	
5	3KJ-15120-00	CRANKCASE ASSY 2 CARTER COMPLETO 2	1	
6	93306-00316	.BEARING .COJINETE	1	
7	91A20-07014	TUBE, FLEXIBLE VINYL TUBO, FLEXIBLE	1	
8	99510-12016	PIN, DOWEL CENTRADOR	2	
9	98507-06035	SCREW, PAN HEAD TORNILLO DE CABEZA CON PLANA	6	
10	3KJ-15317-00	SPACER, ENGINE MOUNT SEPARADPR, MONTANTE DE MOTOR	1	
11	99009-17400	CIRCLIP PRESILLA REDONDA	2	
12	3KJ-15421-00	COVER, CRANKCASE 2 TAPA DE CARTER DERECHA	1	
13	4FB-15461-00	GASKET, CRANKCASE COVER 2 JUNTA TAPA CARTER DRCHO	1	
14	4FB-15451-00	GASKET, CRANKCASE COVER 1 EMPAQ DE CUBIERTA DE CARTER	1	
15	99530-10014	PIN, DOWEL PASADOR, DE CLAVIJA	2	
16	98507-06035	SCREW, PAN HEAD TORNILLO DE CABEZA CON PLANA	2	
17	98507-06020	SCREW, PAN HEAD TORNILLO DE CABEZA CON PLANA	3	
18	3WG-15411-00	COVER, CRANKCASE 1 CUBIERTA DE CARTER 1	1	
19	3KJ-15659-00	SHAFT EJE	1	
20	99530-10014	PIN, DOWEL PASADOR, DE CLAVIJA	2	
21	98507-06025	SCREW, PAN HEAD TORNILLO DE CABEZA CON PLANA	8	
22	98507-06035	SCREW, PAN HEAD TORNILLO DE CABEZA CON PLANA	2	
23	98507-06065	SCREW, PAN HEAD TORNILLO DE CABEZA CON PLANA	1	
24	4J2-15363-00	PLUG, OIL TAPON DE ACEITE	1	
25	93210-14104	O-RING JUNTA TORICA	1	
26	95807-08016	BOLT, FLANGE TUERCA DE REBORDE	1	
27	90201-08087	WASHER, PLATE ARANDELA PLANA	1	
28	1HV-15128-00	HOLDER SOPORTE	1	

B10

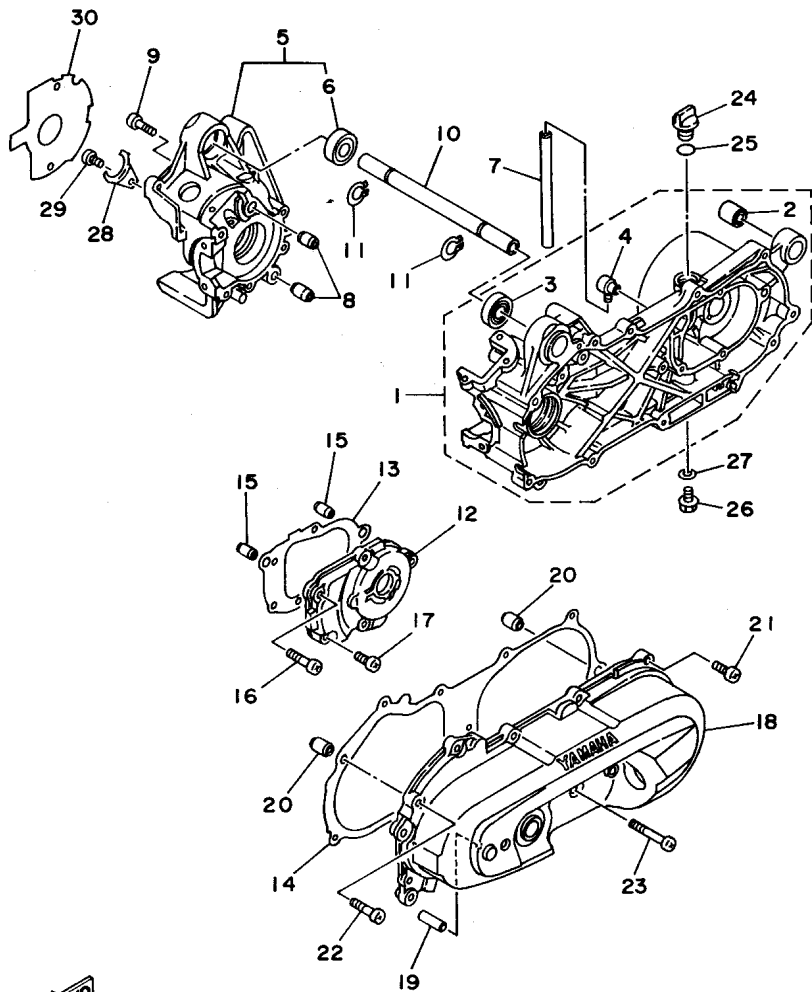


FIG. 8 CRANKCASE CARTER

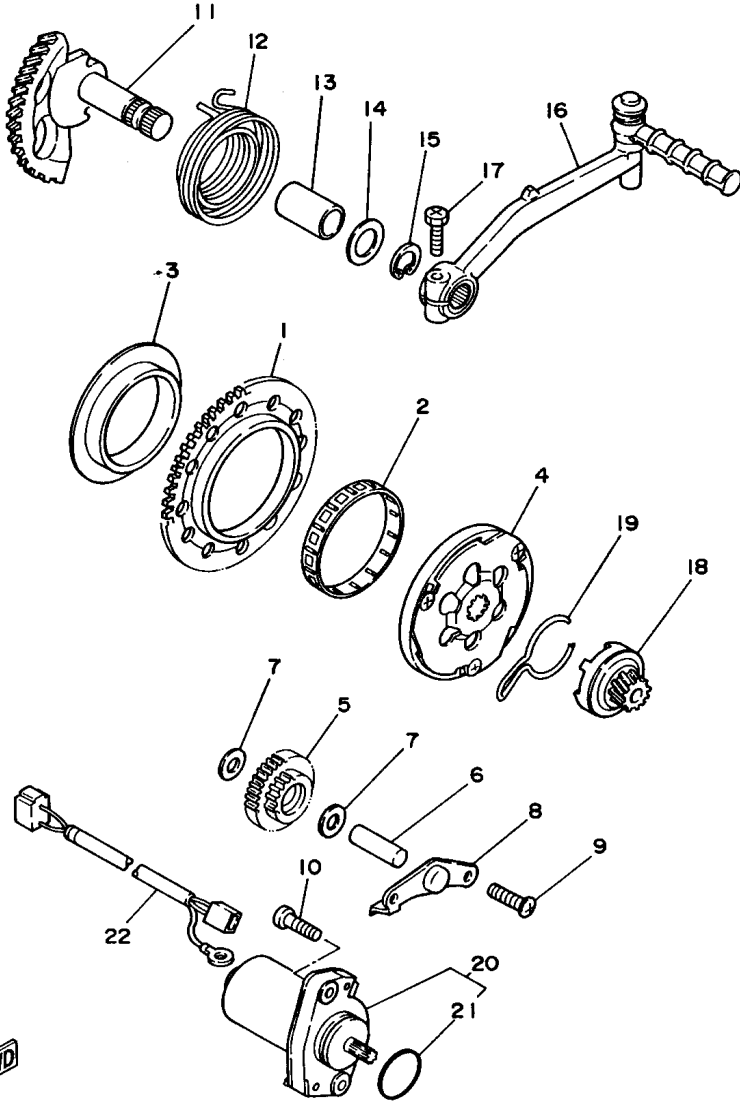
REF. NO.	PART NO. CODIGO NO.	DESCRIPTION DESCRIPCION	Q'TY CANT.	REMARKS OBSERVACION
29	98507-06012	SCREW, PAN HEAD TORNILLO DE CABEZA CON PLANA	1	
30	4FB-15462-00	GASKET, CRANKCASE COVER 3 EMPAQ CUBIERTA DE CARTER 3	1	



4MNI200-4080

**B11**





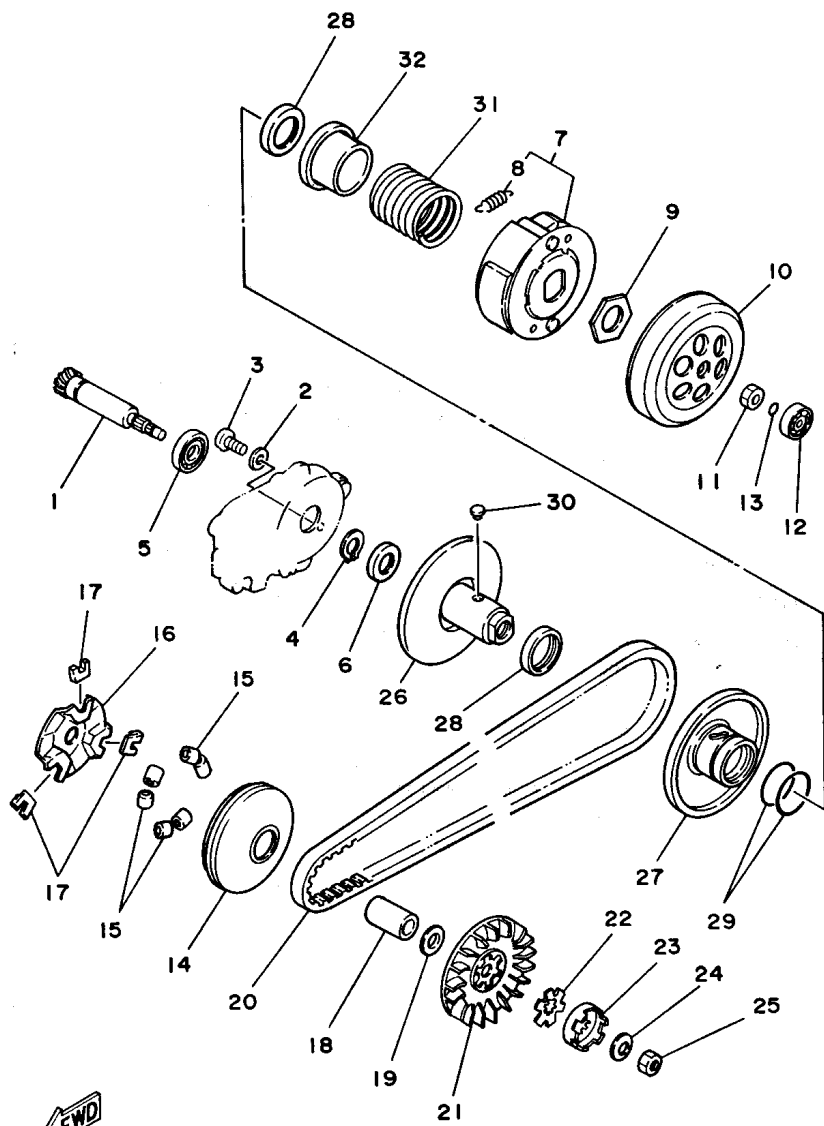
3VP3010-1090

FIG. 9 STARTER

ARRANQUE

REF. NO.	PART NO. CODIGO NO.	DESCRIPTION DESCRIPCION	Q'TY CANT.	REMARKS OBSERVACION
1	4JP-15513-00	GEAR 1 ENGRANAJE 1	1	
2	93310-257R1	BEARING, CYLINDRICAL COJINETE DE RODILLOS	1	
3	3KJ-15528-00	BOSS, GEAR COPA	1	
4	3KJ-15570-01	STARTER CLUTCH ASSY EMBRAQUE DEL ARRANQUE COMPLETA	1	
5	4JP-15650-00	IDLE GEAR ASSY ENGRANAJE NEUTRO COMPLETO	1	
6	50M-13342-00	SHAFT, IDLE GEAR EJE DE ENGRANAJE NEUTRO	1	
7	90201-08088	WASHER, PLATE ARANDELA PLANA	2	
8	3KJ-15532-00	PLATE, IDLE GEAR PLACA DE ENGRANAJE NEUTRO	1	
9	98507-06012	SCREW, PAN HEAD TORNILLO DE CABEZA CON PLANA	2	
10	91316-06020	BOLT TORNILLO ALLEN	2	
11	3KJ-15601-00	KICK SHAFT ASSY EJE DE ARR. DE PIE COMPL	1	
12	90508-32609	SPRING, TORSION RESORTE DE TORSION	1	
13	90380-15083	BUSH, SOLID CASQUILLO SOLIDO	1	
14	90201-154E9	WASHER, PLATE ARANDELA PLANA	1	
15	99009-15400	CIRCLIP PRESILLA REDONDA	1	
16	3KJ-15620-01	KICK CRANK ASSY MANIVELA DE PEDAL COMPLETA	1	
17	90153-06052	SCREW, HEXAGON TORNILLO HEXAGONAL	1	
18	1NT-15630-01	KICK PINION ASSY PINON DE PEDAL COMPLETA	1	
19	32N-15673-00	CLIP PRESILLA	1	
20	3KJ-81800-01	STARTING MOTOR ASSY MOTOR DE ARRANQUE COMPLETO	1	
21	93210-23614	O-RING JUNTA TORICA	1	
22	3KJ-82541-00	WIRE, LEAD CABLE CONDUCTOR	1	

**B12**



FWD

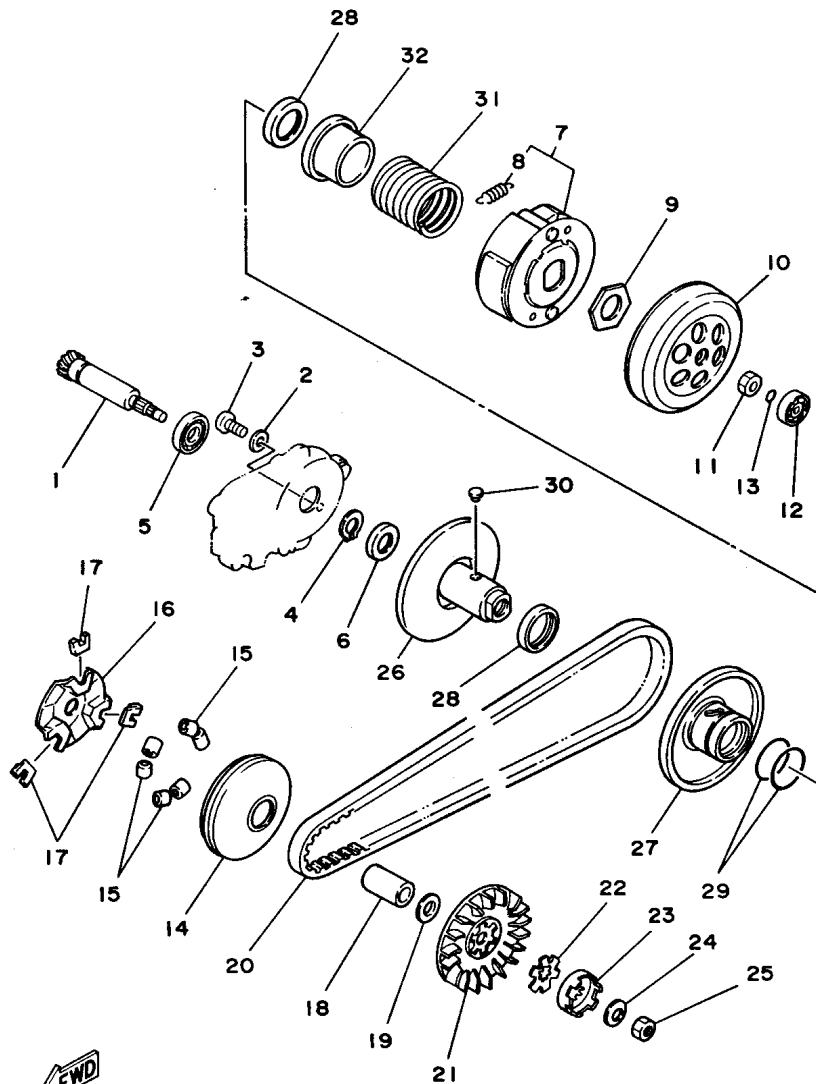
3KJ1010-9100

FIG. 10 CLUTCH

EMBRAGUE

REF. NO.	PART NO. CODIGO NO.	DESCRIPTION DESCRIPCION	Q'TY CANT.	REMARKS OBSERVACION
1	3KJ-16111-00	GEAR, PRIMARY DRIVE (13T) ENGRENAJE TRACC.PRIMARIA (13T)	1	
2	90201-06412	WASHER, PLATE ARANDELA PLANA	1	
3	98507-06010	SCREW, PAN HEAD TORNILLO DE CABEZA CON PLANA	1	
4	99009-17400	CIRCLIP PRESILLA REDONDA	1	
5	93306-00302	BEARING (B6003C3) COJINETE	1	
6	93102-17342	OIL SEAL RETEN DE ACEITE	1	
7	2VK-16620-00	CLUTCH CARRIER ASSY PORTADOR DE EMBRAGUE COMPLETO	1	
8	24G-16626-00	SPRING, CLUTCH WEIGHT 1 RESORTE CONTRAPESO EMBRAGUE	2	
9	90179-28415	NUT TUERCA	1	
10	24G-16611-03	CLUTCH HOUSING COMP. CAJA DE EMBRAGUE COMPLETO	1	
11	90170-10317	NUT TUERCA	1	
12	93300-63813	BEARING COJINETE	1	
13	93210-06550	O-RING JUNTA TORICA	1	
14	2EX-17620-02	PRIMARY SLIDING SHEAVE COMP. ROLDANA PRIMARIA MOVIL	1	
15	52W-17632-00	WEIGHT CONTRAPESO	6	
16	3AA-17623-00	CAM LEVA	1	
17	1NT-17653-00	SLIDER CORREDERA	3	
18	90387-132W6	COLLAR CASQUILLO CON VALONA	1	
19	90201-133M8	WASHER, PLATE ARANDELA PLANA	1	
20	3KJ-17641-00	V-BELT CORREA EN V	1	
21	3KJ-17611-00	SHEAVE, PRIMARY FIXED PISCO FIXADOR DE POREA	1	
22	90214-13055	WASHER, CLAW ARANDELA DE POSICION	1	
23	3KJ-15657-00	CLUTCH, ONEWAY EMBRAQUE SIN RETORNO	1	
24	90208-10012	WASHER, CONICAL SPRING ARANDELA DE RESORTE CONICO	1	
25	90170-10219	NUT TUERCA	1	
26	3GF-17660-02	SECONDARY FIXED SHEAVE COMP. ROLDANA SECUNDARIA FIJA COMPL.	1	
27	3WG-17608-00	SECONDARY SLIDING SHEAVE ROLADANA CORREDIZA SECUND COM	1	
28	93109-33052	OIL SEAL RETEN DE ACEITE	2	

B13



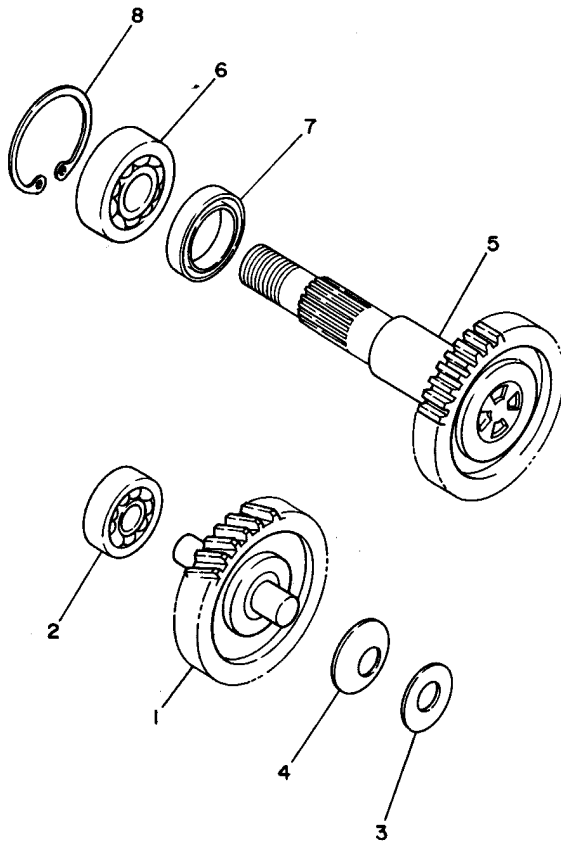
3KJ1010-9100

FIG. 10 CLUTCH

EMBRAGUE

REF. NO.	PART NO. CODIGO NO.	DESCRIPTION DESCRIPCION	Q'TY CANT.	REMARKS OBSERVACION
29	93210-38687	O-RING JUNTA TORICA	2	
30	24G-17664-00	PIN, GUIDE PASADOR DE GUIA	2	
31	90501-357F3	SPRING, COMPRESSION RESORTE DE COMPRESION	1	
32	3KJ-17684-00	SEAT, SECONDARY SPRING ASIENTO DE RESORTE SECUNDARIO	1	

**B14**



3KJ1010-9110

FIG. 11 TRANSMISSION

TRANSMISSION

REF. NO.	PART NO. CODIGO NO.	DESCRIPTION DESCRIPCION	Q'TY CANT.	REMARKS OBSERVACION
1	3YJ-17410-00	MAIN AXLE ASSY (12/48T) EJE PRINCIPAL COMPLETO	1	
2	93306-20006	BEARING (B6200) COJINETE (B6200)	1	
3	90201-123K4	WASHER, PLATE ARANDELA PLANA	1	
4	90208-12049	WASHER, CONICAL SPRING ARANDELA DE RESORTE CONICO	1	
5	3YJ-17420-00	DRIVE AXLE ASSY (36T) EJE DE TRACCION COMPLETO	1	
6	93306-20314	BEARING (B6203) COJINETE	1	
7	93102-22314	OIL SEAL RETEN DE ACEITE	1	
8	93420-40064	CIRCLIP SEGURO	1	

B15

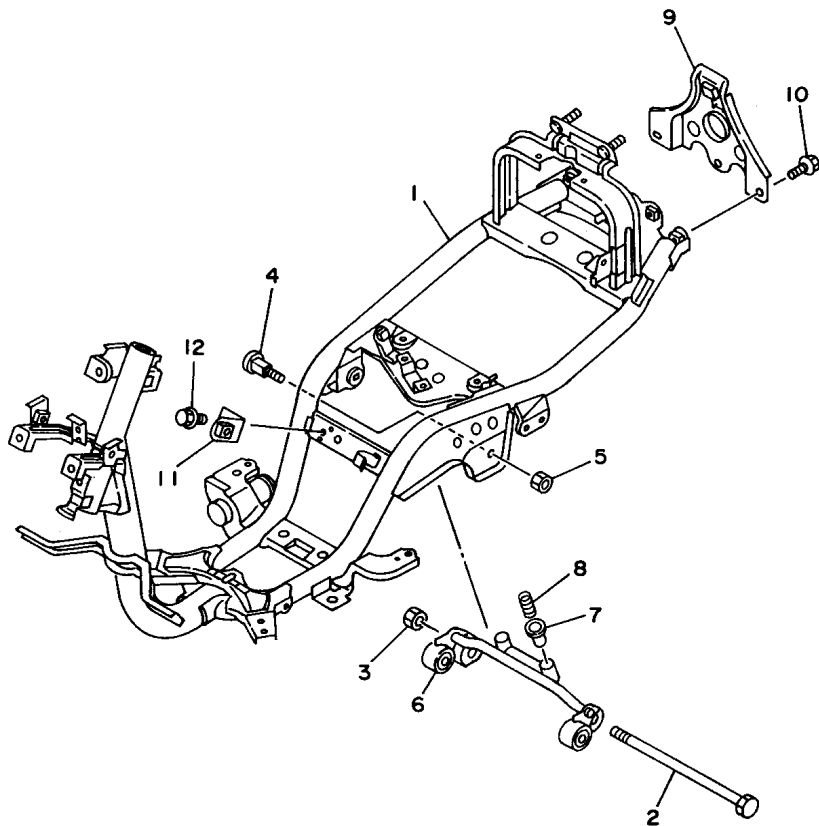


FIG. 12 FRAME

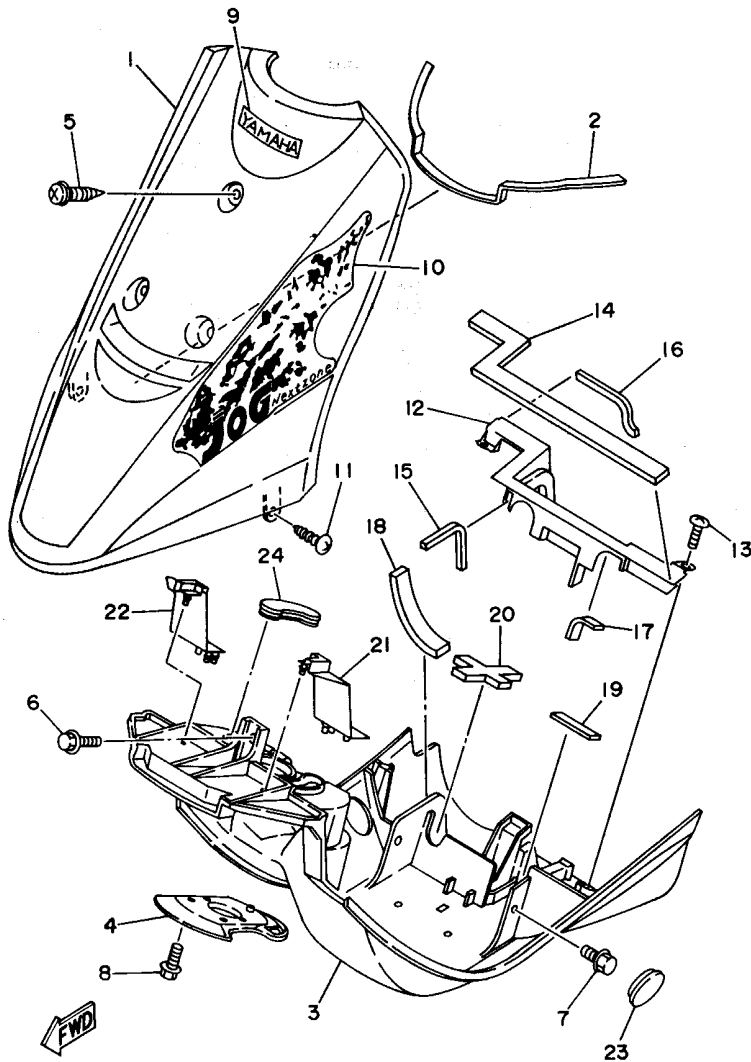
CUADRO

REF. NO.	PART NO. CODIGO NO.	DESCRIPTION DESCRIPCION	Q'TY CANT.	REMARKS OBSERVACION
1	4MN-21110-00	FRAME COMP. ARMAZON COMPLETO	1	
2	3KJ-21481-00	BOLT, ENGINE MOUNTING 1 PERNO DE MONTAJE DE MOTOR 1	1	
3	95607-12200	NUT, SELF-LOCKING TUERCA DE AUTO-CIERRE	1	
4	2T4-21481-01	BOLT, ENGINE MOUNTING 1 PERNO DE MONTAJE DE MOTOR 1	2	
5	90185-10154	NUT, SELF-LOCKING TUERCA AUTOBLOCANTE	2	
6	3KJ-21410-00	ENGINE BRACKET COMP. SOPORTE DE MOTOR COMPLETO	1	
7	2T4-2139X-00	DAMPER AMORTIGUADOR	2	
8	90501-29517	SPRING, COMPRESSION RESORTE DE COMPRESION	2	
9	3KJ-21232-01	REINFORCEMENT, TAIL REFUERZO. TRASERO	1	
10	95807-06012	BOLT, FLANGE TUERCA DE REBORDE	3	
11	4MN-21158-01	BRACKET SOPORTE	1	
12	95807-06012	BOLT, FLANGE TUERCA DE REBORDE	1	

FWD

4MN1200-4120

C2



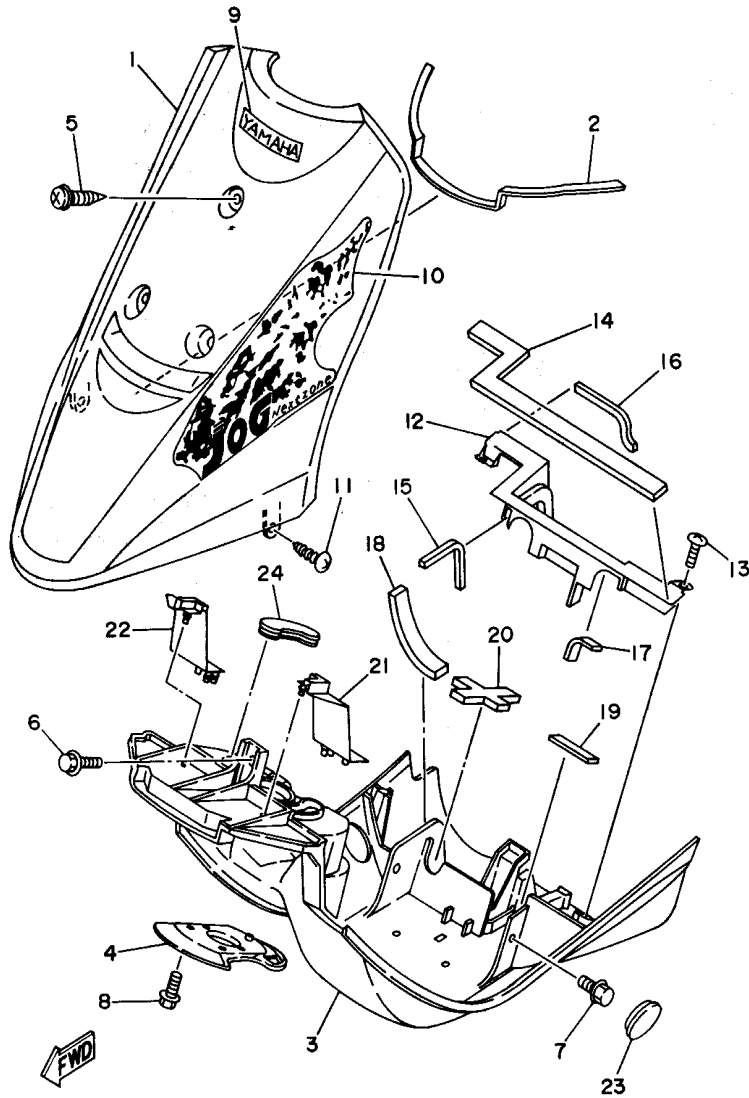
4MN1200-4130

FIG. 13 FENDER

GUARDABARRO

REF. NO.	PART NO. CODIGO NO.	DESCRIPTION DESCRIPCION	Q'TY CANT.	REMARKS OBSERVACION
1	3KJ-21511-00-GE	FENDER, FRONT	1	UR SILKY WHITE
	3KJ-21511-00-P1	GUARDABARRO DELANTERO		
	3KJ-21511-00-P1	FENDER, FRONT	1	UR VIVID RED COCKTAIL 1
	3KJ-21511-00-4B	GUARDABARRO DELANTERO		
	3KJ-21511-00-4B	FENDER, FRONT	1	UR BLACK 2
2	4MN-28218-00	SEAL 1	1	
		SELLO 1		
3	3KJ-21552-02	FENDER, INNER	1	
		GUARDABARRO		
4	27V-21553-03	FENDER, INNER 2	1	
		GUARDABARRO		
5	90159-06178	SCREW, WITH WASHER	3	
		TORNILLO CON VALONA		
6	95807-06012	BOLT, FLANGE	1	
		TUERCA DE REBORDE		
7	95807-06012	BOLT, FLANGE	2	
		TUERCA DE REBORDE		
8	90119-06085	BOLT, WITH WASHER	2	
		TORNILLO CON ARANDELA		
9	3WF-2153E-40	EMBLEM, YAMAHA	1	UR PARA SW
	3WF-2153E-60	EMBLEM, YAMAHA	1	UR PARA VRC1
	3WF-2153E-60	EMBLEM, YAMAHA	1	UR PARA BL2
10	4MN-21578-00	EMBLEM	1	UR PARA SW
	4MN-21578-10	EMBLEM	1	UR PARA VRC1
	4FB-21578-10	EMBLEM	1	UR PARA BL2
11	90167-05041	SCREW, TAPPING	2	
		TORNILLO DE ROSCA HEMBRA		
12	4MN-21523-00	PLATE	1	
		PLACA		
13	97707-50016	SCREW, TAPPING	2	
		TORNILLO ROSCA HEMBRA		
14	4MN-28268-00	SEAL 4	1	
		SELLO 4		
15	4MN-28278-00	SEAL 5	1	
		SELLO 5		
16	4MN-2848F-00	SEAL 6	1	
		SELLO 6		
17	4MN-28307-00	SEAL	2	
		SELLO		
18	4MN-2849F-00	SEAL 7	1	
		SELLO 7		
19	4MN-28307-00	SEAL	1	
		SELLO		
20	4MN-28428-00	SEAL 1	1	
		SELLO 1		
21	4MN-21575-00	SEAL 1	1	
		SELLO 1		
22	4MN-21576-00	SEAL 2	1	
		SELLO 2		

C3



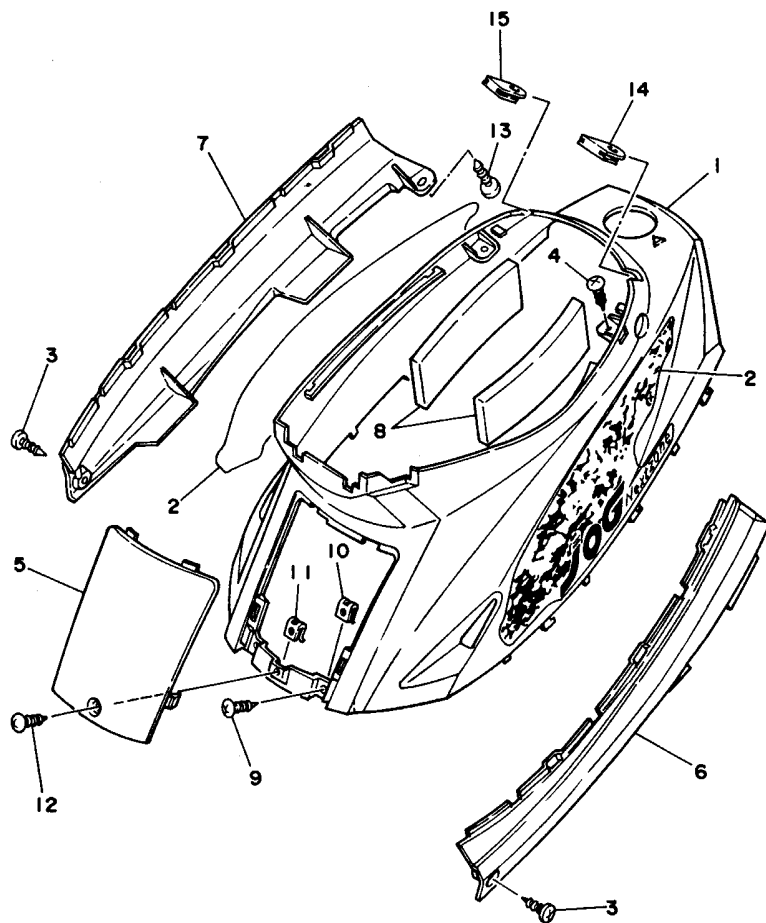
4MN1200-4130

FIG. 13 FENDER

GUARDABARRO

REF. NO.	PART NO. CODIGO NO.	DESCRIPTION DESCRIPCION	Q' TY CANT.	REMARKS OBSERVACION
23	4MN-28245-00	CAP TAPA	2	
24	4MN-2834J-00	CAP 2 TAPA 2	1	

C4



4CG3700-4140

FIG. 14 SIDE COVER

CUBIERTA LATERAL

REF. NO.	PART NO. CODIGO NO.	DESCRIPTION DESCRIPCION	Q'TY CANT.	REMARKS OBSERVACION
1	3KJ-21711-00-GE	COVER, SIDE 1 TAPA LATERAL 1	1	UR SILKY WHITE
	3KJ-21711-00-P1	COVER, SIDE 1 TAPA LATERAL 1	1	UR VIVID RED COCKTAIL 1
	3KJ-21711-00-4B	COVER, SIDE 1 TAPA LATERAL 1	1	UR BLACK 2
2	4MN-2173G-00	EMBLEM SET 1 JUEGO DE EMBLEMA 1	1	UR PARA SW
	4MN-2173G-10	EMBLEM SET 1 JUEGO DE EMBLEMA 1	1	UR PARA VRC1
	4FB-2173G-10	EMBLEM SET 1 JUEGO DE EMBLEMA 1	1	UR PARA BL2
3	90149-06184	SCREW TORNILLO DE REGLAJE	2	
4	90167-05041	SCREW, TAPPING TORNILLO DE ROSCA HEMBRA	2	
5	3KJ-21721-00-GE	COVER, SIDE 2 TAPA LATERAL 2	1	UR SILKY WHITE
	3KJ-21721-00-P1	COVER, SIDE 2 TAPA LATERAL 2	1	UR VIVID RED COCKTAIL 1
	3KJ-21721-00-4B	COVER, SIDE 2 TAPA LATERAL 2	1	UR BLACK 2
6	3KJ-2171L-00	MOLE, SIDE COVER 1 MUELLE, CUBIERTA LATERAL	1	UR SOLID FINE SILVER
	3KJ-2171L-30	MOLE, SIDE COVER 1 MUELLE, CUBIERTA LATERAL	1	UR DEEP PURPLE SOLID
7	3KJ-2171M-00	MOLE, SIDE COVER 2 MUELLE, CUBIERTA LATERAL 2	1	UR SOLID FINE SILVER
	3KJ-2171M-30	MOLE, SIDE COVER 2 MUELLE, CUBIERTA LATERAL 2	1	UR DEEP PURPLE SOLID
8	3KJ-21778-00	DAMPER, LOCATING 1 AMORTIGUADOR DE MONTAJE	2	
9	90167-05041	SCREW, TAPPING TORNILLO DE ROSCA HEMBRA	2	
10	90183-05042	NUT, SPRING TUERCA DE RESORTE	2	
11	90183-05042	NUT, SPRING TUERCA DE RESORTE	1	
12	90167-05055	SCREW, TAPPING TORNILLO DE ROSCA HEMBRA	1	
13	90167-05041	SCREW, TAPPING TORNILLO DE ROSCA HEMBRA	2	
14	3KJ-24845-00	COVER 1 CUBIERTA 1	1	
15	3KJ-24846-00	COVER 2 CUBIERTA 2	1	

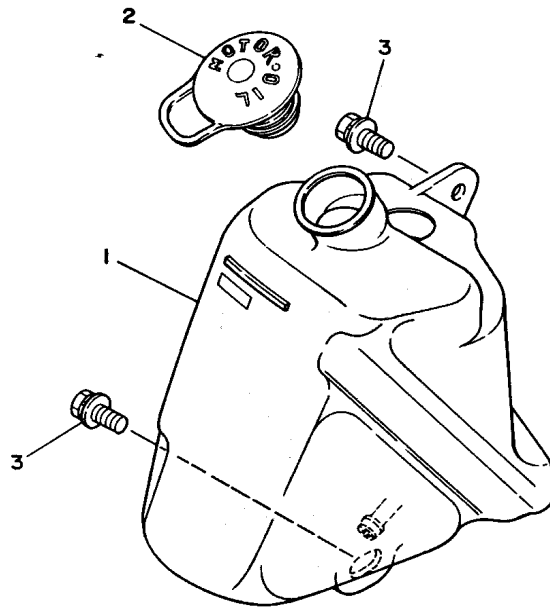
C5



FIG. 15 OIL TANK

DEPOSITO DE ACEITE

REF. NO.	PART NO. CODIGO NO.	DESCRIPTION DESCRIPCION	Q'TY CANT.	REMARKS OBSERVACION
1	4MN-21751-00	TANK, OIL DEPOSITO DE ACEITE	1	
2	2N3-21771-01	BODY, CAP TAPON DEPOSITO ACEITE	1	
3	90119-06042	BOLT, WITH WASHER TORNILLO CON ARANDELA	2	



3KJ1010-9150

C6

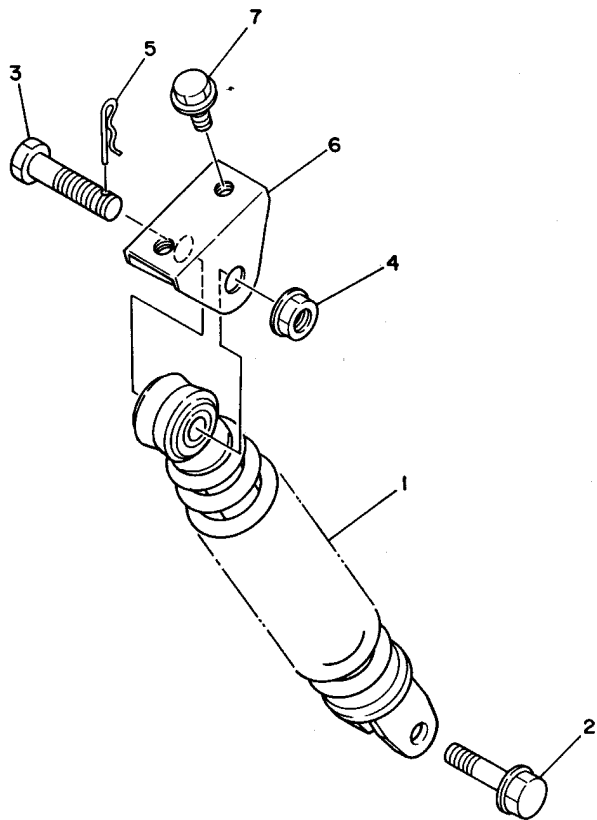


FIG. 16 REAR SUSPENSION

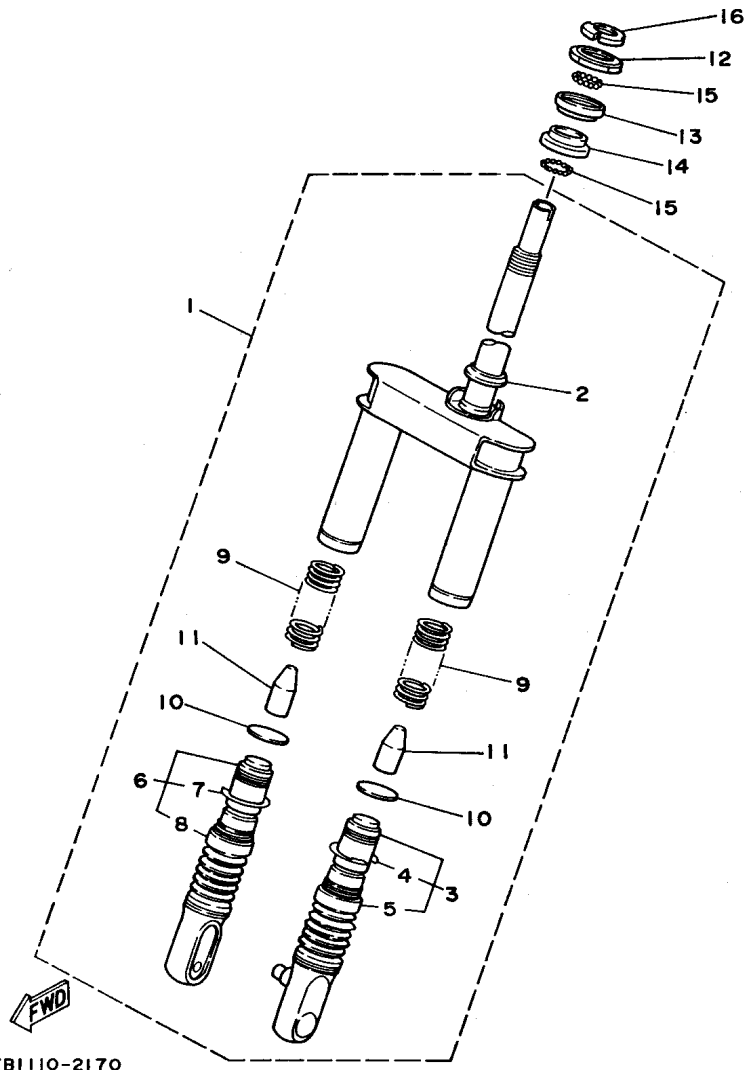
SUSPENSION TRASERO

REF. NO.	PART NO. CODIGO NO.	DESCRIPTION DESCRIPCION	Q'TY CANT.	REMARKS OBSERVACION
1	4MN-22210-00	SHOCK ABSORBER ASSY, REAR AMORTIGUADOR TRASERO COMPLETO	1	
2	90105-08121	BOLT, WASHER BASED TORNILLO CON ARANDELA	1	
3	90102-10031	BOLT, WITH HOLE PERNO CON ORIFICIO	1	
4	95707-10500	NUT, FLANGE TUERCA DE BRIDA	1	
5	90468-12006	CLIP PRESILLA	1	
6	3KJ-21381-00	BRACKET, REAR SHOCK ABSORBER SOPORTE AMORTIGUADOR TRASERO	1	
7	95827-08012	BOLT, FLANGE TUERCA DE REBORDE	2	



3KJ1010-9160

C7



4FBI110-2170

FIG. 17 FRONT FORK

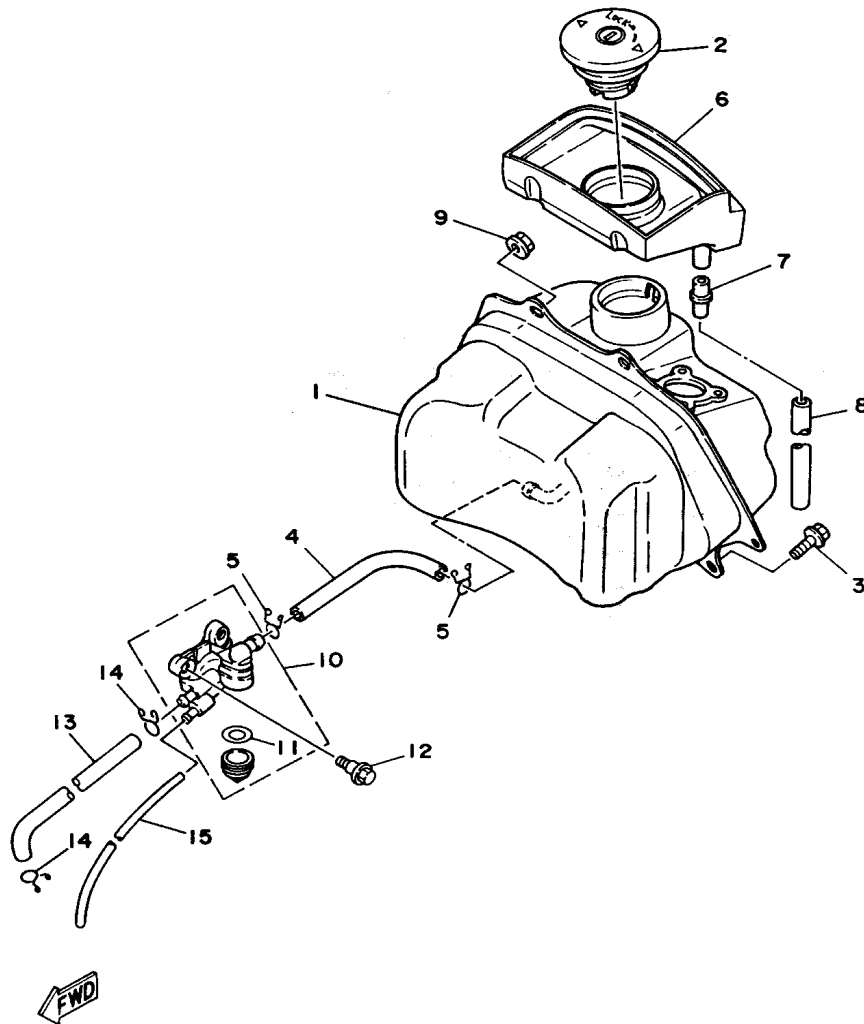
HORQUILLA DELANTERA

REF. NO.	PART NO. CODIGO NO.	DESCRIPTION DESCRIPCION	Q'TY CANT.	REMARKS OBSERVACION
1	4MN-23100-00	FRONT FORK ASSY HORQUILLA DELANTERA COMPLETA	1	
2	3YJ-23414-00	RACE, BALL 4 .BASE DE BOLA 4	1	
3	4MN-23110-00	INNER TUBE COMP.1 .TUBO INTERIOR COMPLETO 1	1	
4	93450-30057	CIRCLIP .SEGURO	1	
5	4MN-23191-00	BOOT .FUNDA	1	
6	4MN-23120-00	INNER TUBE COMP.2 .TUBO INTERIOR COMPLETO 2	1	
7	93450-30057	CIRCLIP .SEGURO	1	
8	4MN-23191-00	BOOT .FUNDA	1	
9	4MN-23141-00	SPRING, FRONT FORK .RESORTE HORQUILLA DELANT.	1	
10	2E9-23143-00	SEAT, SPRING LOWER .ASIENTO DE RESORTE INFERIOR	1	
11	1RN-23195-00	RUBBER .GOMA	2	
12	3KJ-23411-01	RACE, BALL 1 PISTA DE BOLAS 1	1	
13	2E9-23412-00	RACE, BALL 2 PISTA DE BOLAS 2	1	
14	2E9-23413-01	RACE, BALL 3 BASE DE BOLA 3	1	
15	93505-32002	BALL ESFERA	52	
16	2E9-23454-00	NUT, FITTING 2 TUERCA ACCESORIA 2	1	

C8

FIG. 18 FUEL TANK

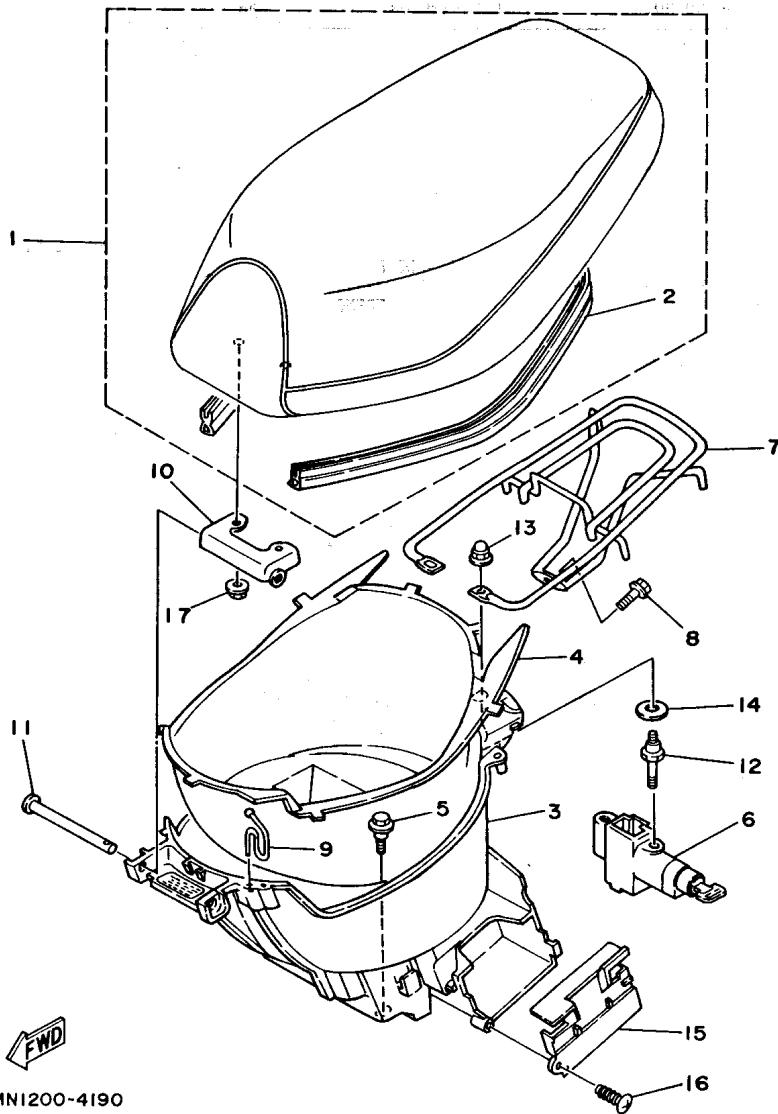
DEPOSITO DE COMBUSTIBLE



REF. NO.	PART NO. CODIGO NO.	DESCRIPTION DESCRIPCION	Q'TY CANT.	REMARKS OBSERVACION
1	3KJ-24110-01	FUEL TANK COMP.	1	
	4MS-F4110-00	DEPOSITO DE COMBUSTIBLE COMP.	1	PARA BRAZIL
2	4JP-24602-00	FUEL TANK COMP. CAP ASSY	1	
		TAPON COMPLETO		
3	95807-06012	BOLT, FLANGE	1	
		TUERCA DE REBORDE		
4	90445-11161	HOSE	1	
		TUBO		
5	90467-10129	CLIP	2	
		PRESILLA		
6	3KJ-2414A-01	COVER, FILLER	1	
		CUBIERTA DE LLENADOR		
7	4JP-21753-00	BOSS, CONNECTOR	1	
		COPA DE CONECTOR		
8	91A20-07033	TUBE, FLEXIBLE VINYL	1	
		TUBO, FLEXIBLE		
9	95707-06500	NUT, FLANGE	2	
		TUERCA DE BRIDA		
10	3KJ-24500-01	FUEL COCK ASSY 1	1	
		GRIFO DE COMBUSTIBLE		
11	4X8-24565-00	GASKET	1	
		EMPAQUE		
12	90109-063F5	BOLT	2	
		PERNO		
13	3KJ-24311-00	PIPE, FUEL 1	1	
		TUBO DE COMBUSTIBLE 1		
14	90467-09006	CLIP	2	
		PRESILLA		
15	90445-07166	HOSE	1	
		TUBO		

4CG3700-4180

C9



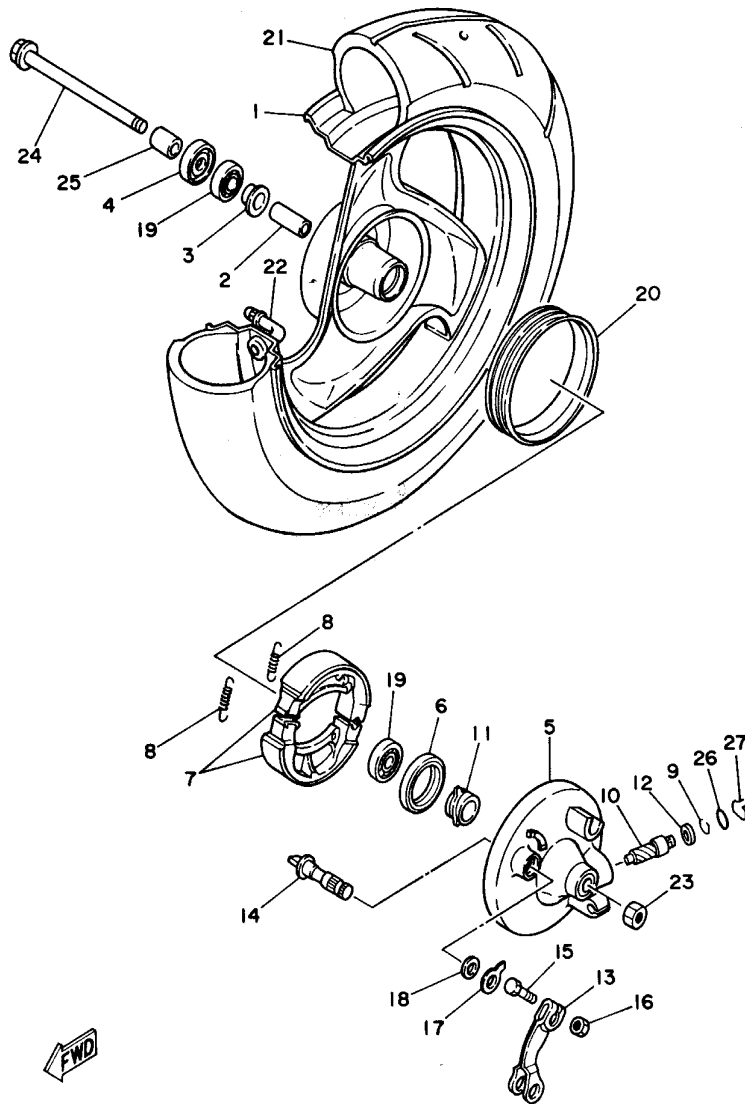
4MNI200-4190

FIG. 19 SEAT. CARRIER

ASIENTO. PORTAEQUIPAJE

REF. NO.	PART NO. CODIGO NO.	DESCRIPTION DESCRIPCION	Q'TY CANT.	REMARKS OBSERVACION
1	4MN-24710-00	SINGLE SEAT ASSY ASIENTO SIMPLE COMPLETO	1	
2	3KJ-2475M-00	SEAL .SELLO	1	
3	3KJ-2473R-00	BOX 1 CAJA 1	1	
4	3KJ-24747-00	DAMPER, SEAT AMORTIGUADOR DE ASIENTO	1	
5	90109-063F1	BOLT PERNO	2	
6	3FC-24705-03	SEAT LOCK ASSY CIERRE DE SILLIN COMPLETO	1	
7	3KJ-24042-10	CARRIER, REAR PARRILLA	1	
8	95807-08012	BOLT, FLANGE TUERCA DE REBORDE	1	
9	3KJ-21398-00	HANGER, HELMET COLGADOR DE CASCO	1	
10	3KJ-24726-00	HINGE, SEAT HINGE SEAT	1	
11	90241-10015	PIN PASADOR	1	
12	3KJ-24717-00	BOLT, SEAT FITTING PERNO ACCESORIO DE ASIENTO	2	
13	90176-06065	NUT, CROWN TUERCA CORONA	2	
14	90201-12175	WASHER, PLATE ARANDELA PLANA	2	
15	3KJ-82129-00	COVER, BATTERY CUBIERTA DE BATERIA	1	
16	90167-05041	SCREW, TAPPING TORNILLO DE ROSCA HEMBRA	1	
17	95707-06500	NUT, FLANGE TUERCA DE BRIDA	2	

C10



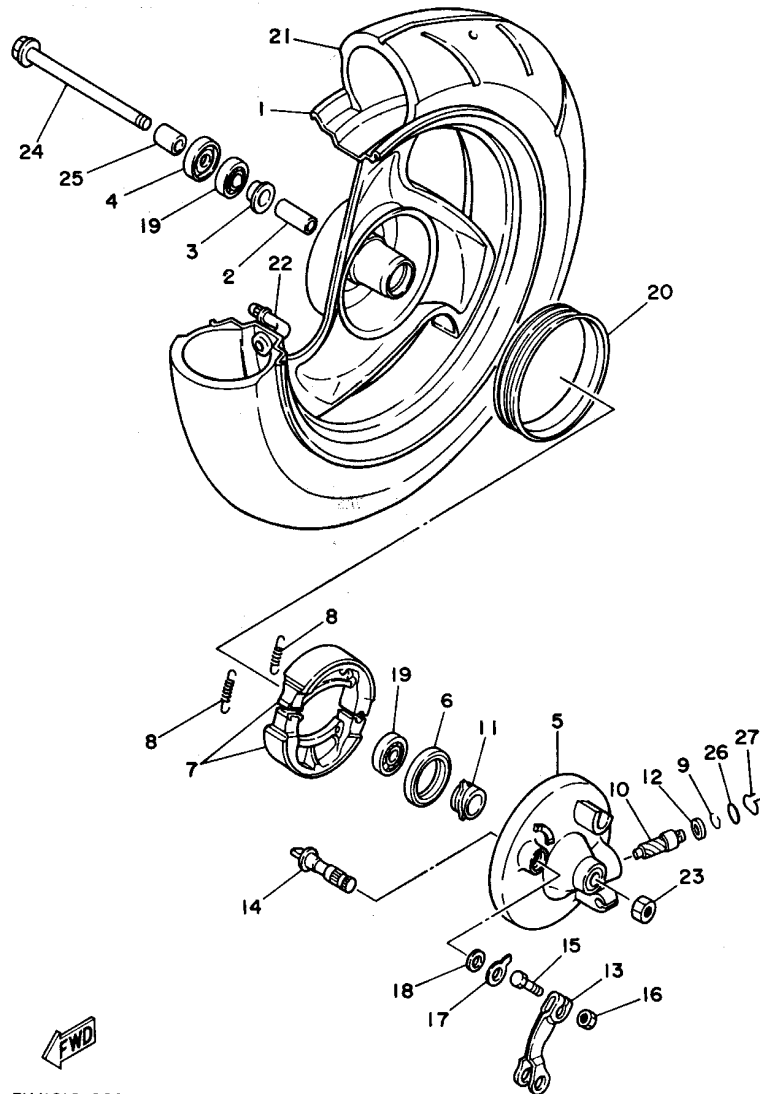
3KJ1010-9200

FIG. 20 FRONT WHEEL

RUEDA DELANTERA

REF. NO.	PART NO. CODIGO NO.	DESCRIPTION DESCRIPCION	Q'TY CANT.	REMARKS OBSERVACION
1	3YJ-25180-00-P2	FRONT WHEEL COMP.	1	UR DEEP PURPLE SOLID 1
	3YJ-25180-00-33	RUEDA DELANTERA COMPLETA	1	UR YAMAHA BLACK
2	90560-10289	FRONT WHEEL COMP. RUEDA DELANTERA COMPLETA	1	
		SPACER SEPARADOR	1	
3	25K-25116-00	FLANGE, SPACER 2	1	
		BRIDA DE ESPACIADOR 2	1	
4	93106-17015	OIL SEAL	1	
		RETEN DE ACEITE	1	
5	2GM-25121-00-P8	PLATE, BRAKE SHOE	1	UR DEEP PURPLE SOLID 1
	2GM-25121-00-33	PLACA DE ZAPATA DE FRENO	1	UR YAMAHA BLACK
		PLATE, BRAKE SHOE	1	
		PLACA DE ZAPATA DE FRENO	1	
6	93109-34057	OIL SEAL	1	
		RETEN DE ACEITE	1	
7	4FB-W2535-00	BRAKE SHOE SET	1	
		JUEGO DE ZAPATA DE FRENO	1	
8	90506-14081	SPRING, TENSION	2	
		RESORTE DE TENSION	2	
9	2T4-25137-00	RING, STOP	1	
		ANILLO DE TOPE	1	
10	2E9-25138-00	GEAR, METER	1	
		ENGRANAJE DE MEDIDOR	1	
11	2E9-25135-00	GEAR, DRIVE (14T)	1	
		ENGRANAJE DE TRACCION	1	
12	90201-064L6	WASHER, PLATE	1	
		ARANDELA PLANA	1	
13	2T4-25155-00	LEVER, CAMSHAFT 1	1	
		PALANCA DE ARBOL DE LEVAS	1	
14	3KJ-25151-00	CAMSHAFT	1	
		ARBOL DE LEVAS	1	
15	97007-05020	BOLT	1	
		PERNO	1	
16	95307-05600	NUT	1	
		TUERCA	1	
17	3L8-2513A-00	PLATE, INDICATOR	1	
		PLACA DE INDICADOR	1	
18	25K-25159-00	SEAL, CAMSHAFT	1	
		SELLO DE ARBOL DE LEVAS	1	
19	93306-20005	BEARING (B6200)	2	UR KOYO
		COJINETE (B6200)	2	
	93306-20006	BEARING (B6200)	2	UR NTN
		COJINETE (B6200)	2	
20	3KJ-25185-00	RING 1	1	
		ANILLO 1	1	
21	94108-1002S	TIRE (80/90-10 34J)	1	
		NEUMATICO	1	
22	93900-00027	VALVE, RIM	1	
		VALVULA	1	
23	90185-10154	NUT, SELF-LOCKING	1	
		TUERCA AUTOBLOCANTE	1	
24	3YJ-25181-00	AXLE, WHEEL	1	
		EJE DE LA RUEDA	1	
25	90560-10360	SPACER	1	
		SEPARADOR	1	

C11



3KJ1010-9200

FIG. 20 FRONT WHEEL

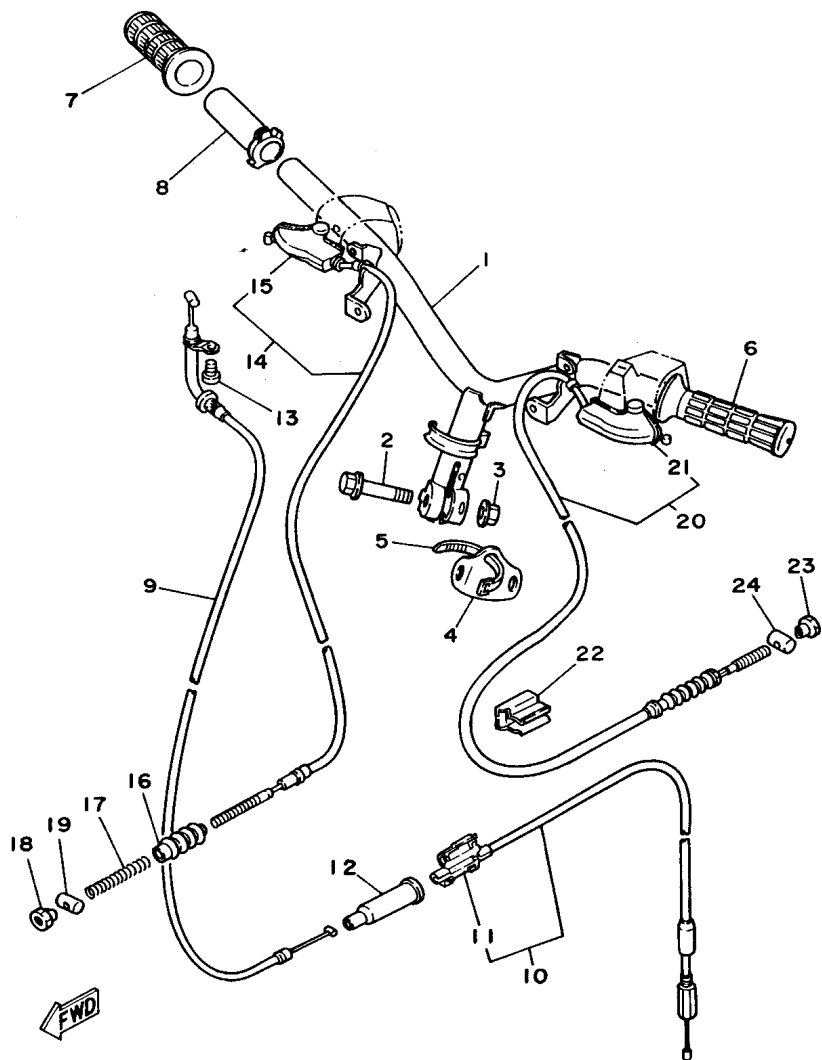
RUEDA DELANTERA

REF. NO.	PART NO. CODIGO NO.	DESCRIPTION DESCRIPCION	Q'TY CANT.	REMARKS OBSERVACION
26	93210-10096	O-RING JUNTA TORICA	1	
27	2E9-25137-01	RING, STOP ANILLO DE TOPE	1	

C12







4MN1200-4220

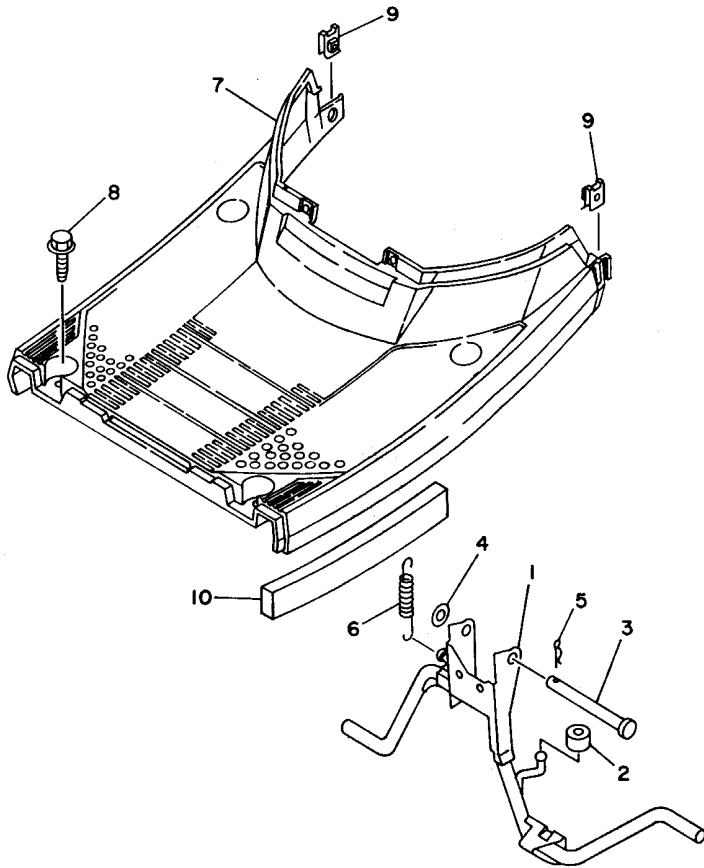
FIG. 22 STEERING HANDLE. CABLE MANUBRIO. CABLE

REF. NO.	PART NO. CODIGO NO.	DESCRIPTION DESCRIPCION	Q'TY CANT.	REMARKS OBSERVACION
1	3KJ-26110-00	HANDLE COMP. MANUBRIO COMPLETE	1	
2	90105-10036	BOLT, WASHER BASED TORNILLO CON ARANDELA	1	
3	90185-10154	NUT, SELF-LOCKING TUERCA AUTOBLOCANTE	1	
4	2EK-26293-00	BAND BANDA	1	
5	12R-82591-00	BAND BANDA	1	
6	5G3-26241-00	GRIP (LEFT) EMPUNADURA (MI)	1	BLACK
7	5G3-26242-00	GRIP (RIGHT) EMPUNADURA (MD)	1	BLACK
8	2GN-26243-00	TUBE, THROTTLE GUIDE TUBO DE GUIA DE OBTURADOR	1	
9	3KJ-26311-00	CABLE, THROTTLE 1 CABLE DE ACELERADOR 1	1	
10	3KJ-26312-00	CABLE, THROTTLE 2 CABLE DE ACELERADOR 2	1	
11	53L-26261-01	.CONNECTOR, CABLE .CONECTOR DE CABLE	1	
12	1YU-26329-00	CAP, RUBBER TAPA DE ANILLO PROTECTOR	1	
13	98507-05010	SCREW, PAN HEAD TORNILLO DE CABEZA CON PLANA	1	
14	3KJ-26341-00	CABLE, BRAKE CABLE DE FRENO	1	
15	3YJ-2637A-00	.COVER, HANDLE LEVER 2 .CUBIERTA DE PALANCA DE MANUB	1	
16	3KJ-26342-00	BOOT, CABLE FUNDA DE CABLE	1	
17	90501-10513	SPRING, COMPRESSION RESORTE DE COMPRESION	1	01
18	90179-06411	NUT TUERCA	1	
19	90249-12008	PIN PASADOR	1	
20	3KJ-26351-01	CABLE, BRAKE CABLE DE FRENO	1	
21	3YJ-26372-00	.COVER, HANDLE LEVER 1 .CUBIERTA DE PALANCA DE MANUB	1	
22	3KJ-26393-00	HOLDER SOPORTE	1	
23	90179-06411	NUT TUERCA	1	
24	90249-12008	PIN PASADOR	1	

C14

FIG. 23 STAND. FOOTREST

SOPORTE. APOYAPIE



REF. NO.	PART NO. CODIGO NO.	DESCRIPTION DESCRIPCION	Q'TY CANT.	REMARKS OBSERVACION
1	4MN-27111-00	STAND, MAIN PUNTAL PRINCIPAL	1	
	4MS-F7111-00	STAND, MAIN PUNTAL PRINCIPAL	1	PARA BRAZIL
2	90387-065X4	COLLAR CASQUILLO CON VALONA	1	
3	90240-10137	PIN, CLEVIS PASADOR CON HOYO	1	
4	90202-10120	WASHER, PLATE ARANDELA DE PLANA	1	
5	90468-12006	CLIP PRESILLA	1	
6	90506-32464	SPRING, TENSION RESORTE DE TENSION	1	
7	3KJ-27481-01	BOARD, FOOTREST TABLERO DE APOYAPIE	1	UR PARA VRC1
	3KJ-27481-31	BOARD, FOOTREST TABLERO DE APOYAPIE	1	UR PARA BL2, SW
8	90119-06060	BOLT, WITH WASHER TORNILLO CON ARANDELA	4	
9	25G-21535-00	NUT 1 JUERCA 1	2	
10	4MN-28228-00	SEAL 2 SELLO 2	2	



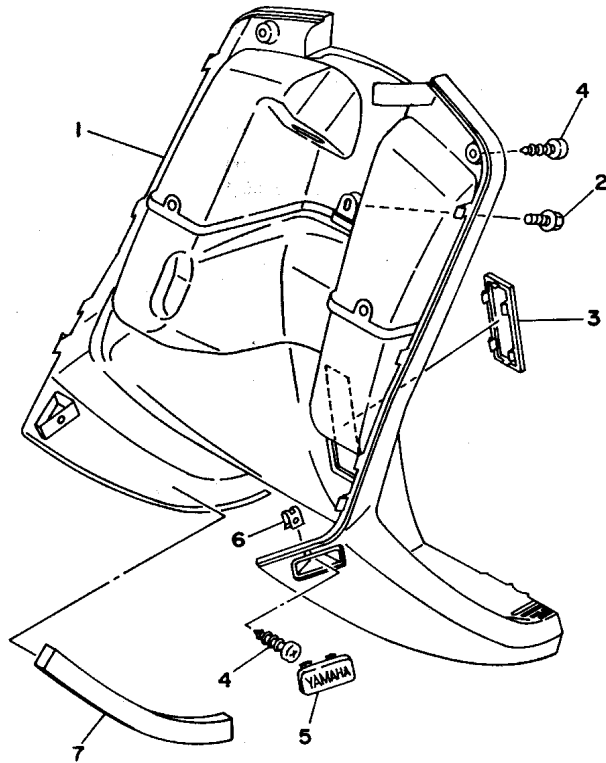
4MN1200-4230

C15

FIG. 24 LEG SHIELD

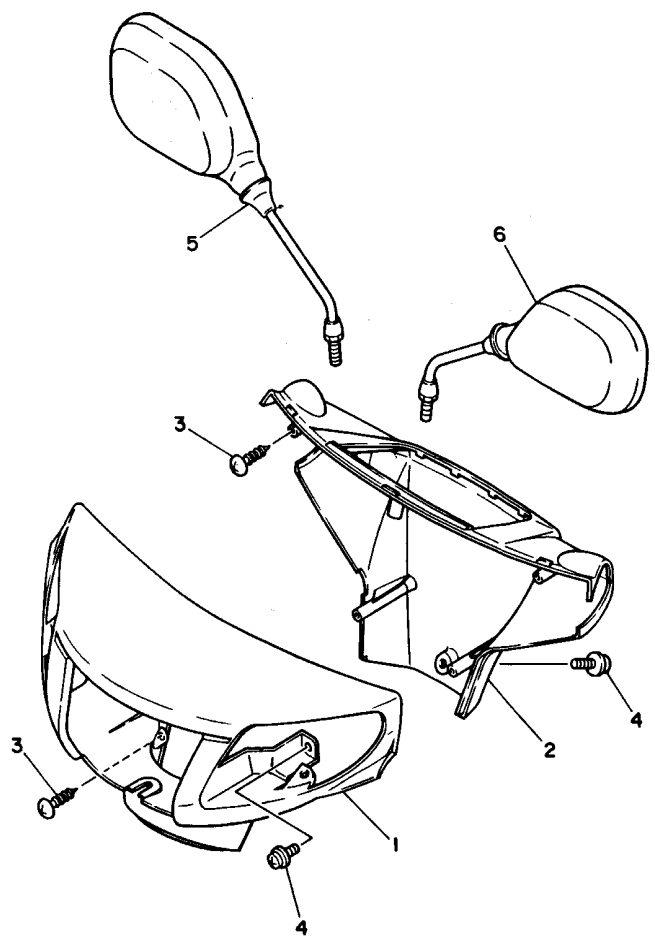
PATA PROTEGIDA

REF. NO.	PART NO. CODIGO NO.	DESCRIPTION DESCRIPCION	Q'TY CANT.	REMARKS OBSERVACION
1	3KJ-28300-00	LEG SHIELD ASSY PROTECCION DE PATA COMPLETA	1	UR SOLID FINE SILVER
	3KJ-28300-30	LEG SHIELD ASSY PROTECCION DE PATA COMPLETA	1	UR DEEP PURPLE SOLID 1
2	90159-06182	SCREW, WITH WASHER TORNILLO CON VALONA	1	
3	20H-28349-01	CAP TAPA	1	UR SOLID FINE SILVER
	20H-28349-E0	CAP TAPA	1	UR DEEP PURPLE SOLID 1
4	90167-05041	SCREW, TAPPING TORNILLO DE ROSCA HEMBRA	2	
5	3FC-27475-20	CAP 1 TAPA 1	2	UR SOLID FINE SILVER
	3FC-27475-30	CAP 1 TAPA 1	2	UR DEEP PURPLE SOLID 1
6	90183-05042	NUT, SPRING TUERCA DE RESORTE	2	
7	4MN-28238-00	SEAL 3 SELLO 3	2	



4MN1200-4240

D2



4GF1210-2250

FIG. 25 COWLING 1

BOVEDA 1

REF. NO.	PART NO. CODIGO NO.	DESCRIPTION DESCRIPCION	Q'TY CANT.	REMARKS OBSERVACION
1	3KJ-26143-01-GE	COVER, HANDLEBAR UPPER 1 CUBIERTA DE MANUBRIO SUPERIOR1	1	UR SILKY WHITE
	3KJ-26143-01-P1	COVER, HANDLEBAR UPPER 1 CUBIERTA DE MANUBRIO SUPERIOR1	1	UR VIVID RED COCKTAIL 1
	3KJ-26143-01-4B	COVER, HANDLEBAR UPPER 1 CUBIERTA DE MANUBRIO SUPERIOR1	1	UR BLACK 2
2	3KJ-26145-02	COVER, HANDLEBAR UPPER 2 CUBIERTA DE MANUBRIO SUPERIOR2	1	UR PARA VRC1
	3KJ-26145-32	COVER, HANDLEBAR UPPER-2 CUBIERTA DE MANUBRIO SUPERIOR2	1	UR PARA BL2, SW
3	97707-50014	SCREW, TAPPING TORNILLO ROSCA HEMBRA	4	
4	90159-05121	SCREW, WITH WASHER TORNILLO CON VALONA	3	
5	3AA-26290-00	REAR VIEW MIRROR ASSY (RIGHT) ESPEJO COMPLETO (DERECHO)	1	
6	3AA-26280-00	REAR VIEW MIRROR ASSY (LEFT) ESPEJO COMPLETO (IZQUIERDO)	1	

D3

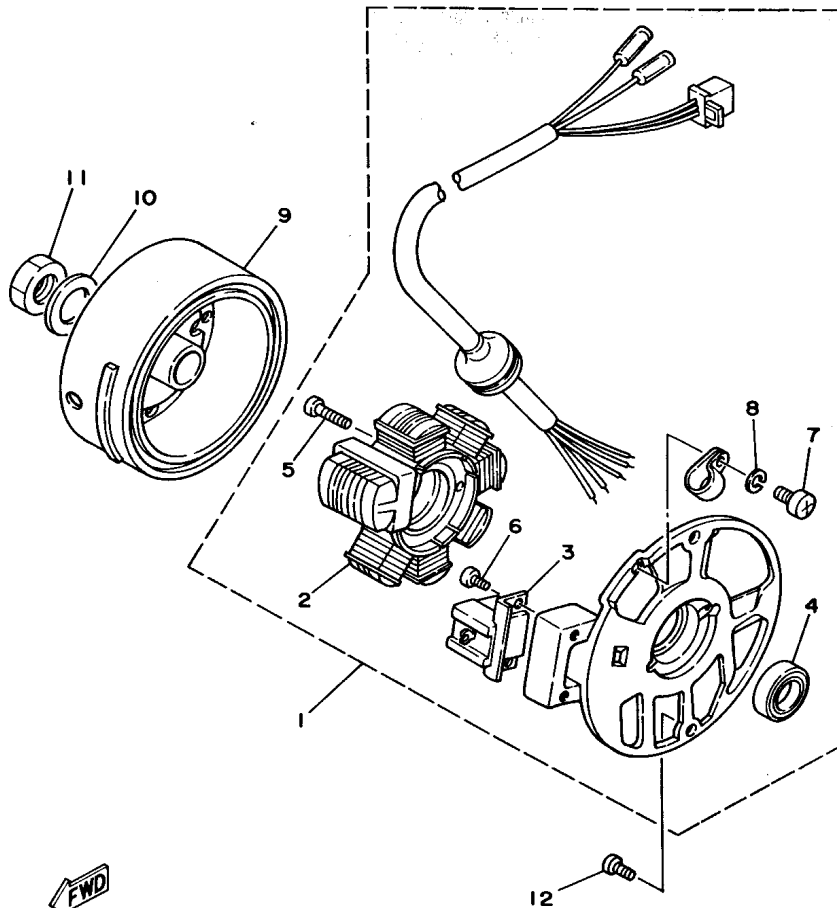


FIG. 26 GENERATOR

GENERADOR

REF. NO.	PART NO. CODIGO NO.	DESCRIPTION DESCRIPCION	Q'TY CANT.	REMARKS OBSERVACION
1	3KJ-85560-00	BASE ASSY CONJUNTO BASE	1	
2	2JA-81403-M0	.STATORCOMP. .ESTATOR COMPLETO	1	
3	2JA-85580-M0	.COIL, PULSER .BOBINA DE PULSACION	1	
4	93104-19097	.OIL SEAL .SELLO ACEITE	1	
5	98511-05020	.SCREW, PAN HEAD .TORNILLO, DE CABEZA CRUZADA	2	
6	98507-05010	.SCREW, PAN HEAD .TORNILLO DE CABEZA CON PLANA	2	
7	98501-04006	.SCREW, PAN HEAD .TORNILLO DE CABEZA CRUZADA	1	
8	92901-04100	.WASHER, SPRING .ARANDELA PLANA	1	
9	2JA-85550-00	ROTOR ASSY ROTOR COMPLETO	1	
10	92907-10600	WASHER ARANDELA	1	
11	90170-10219	NUT TUERCA	1	
12	98507-06016	SCREW, PAN HEAD TORNILLO DE CABEZA CON PLANA	2	



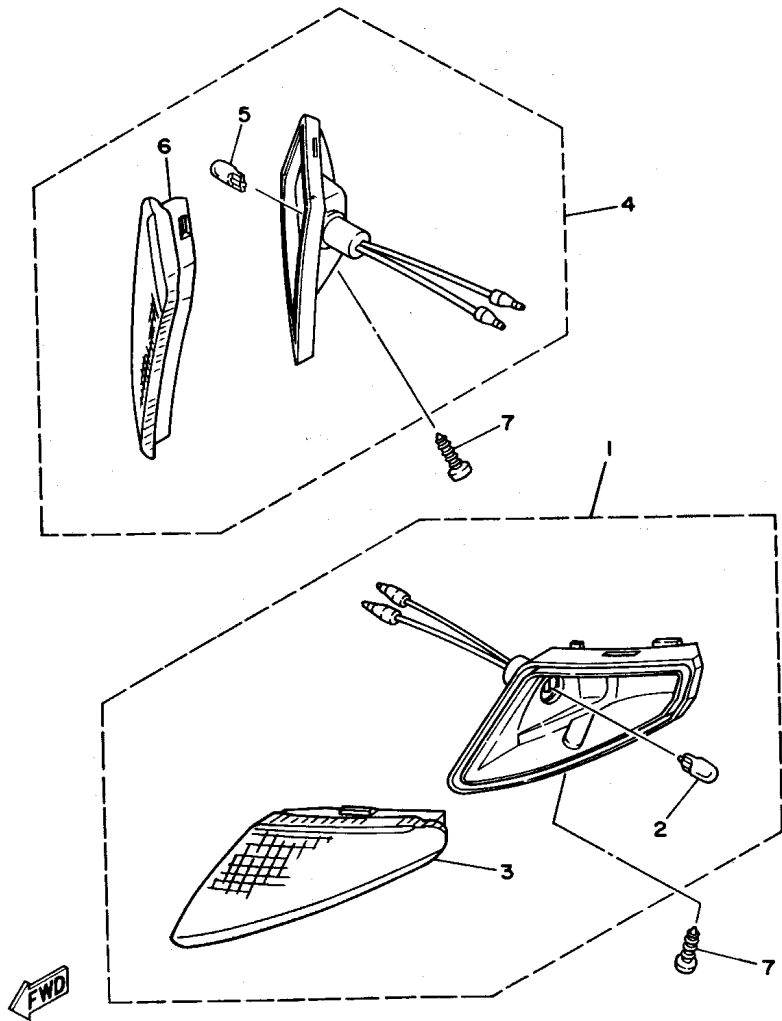
3KJ1010-9260

D4

FIG. 27 FLASHER LIGHT

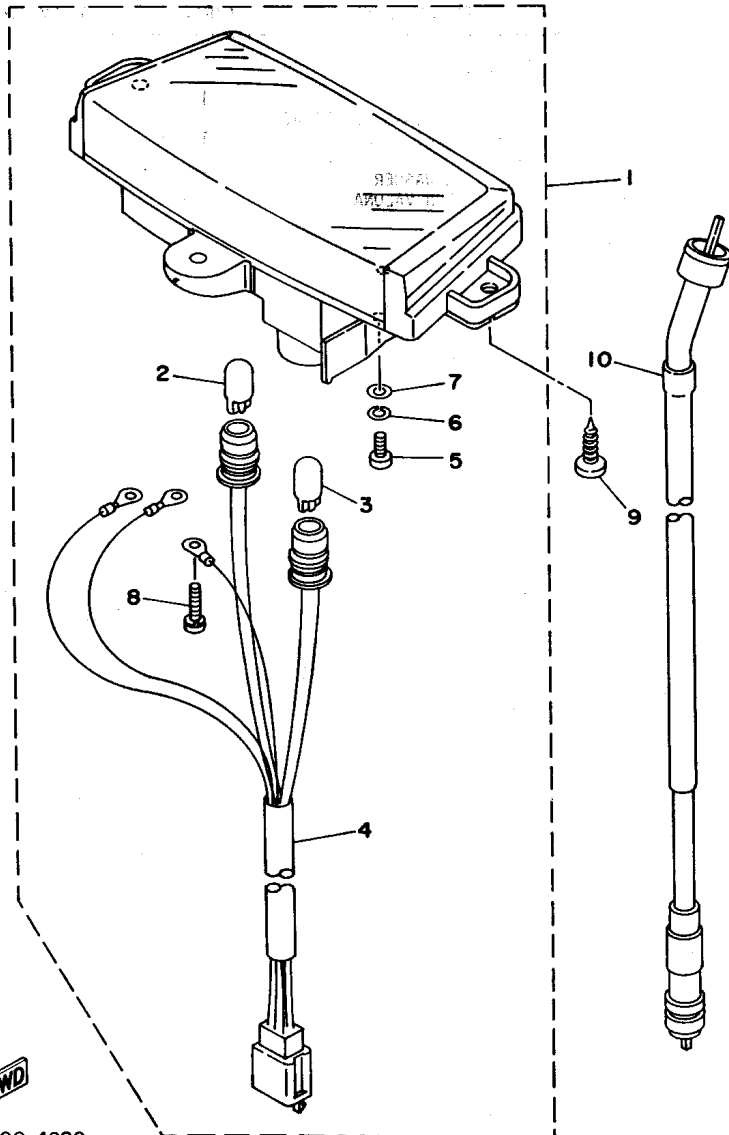
LUZ DE DESTELLADOR

REF. NO.	PART NO. CODIGO NO.	DESCRIPTION DESCRIPCION	Q'TY CANT.	REMARKS OBSERVACION
1	3KJ-83310-00	FRONT FLASHER LIGHT ASSY 1 DESTELLADOR DE LUZ DELANT.	1	
2	54V-83311-00	.BULB, FLASHER (12V-8W) .BOMBILLA (12V-8W)	1	
3	3KJ-83312-00	.LENS, FLASHER .LENTE DE DESTELLADOR	1	
4	3KJ-83320-00	FRONT FLASHER LIGHT ASSY 2 DESTELLADOR DE LUZ DELANT.	1	
5	54V-83311-00	.BULB, FLASHER (12V-8W) .BOMBILLA (12V-8W)	1	
6	3KJ-83322-00	.LENS, FLASHER 2 .LENTE DE INTERMITENTE 2	1	
7	97707-50510	SCREW, TAPPING TORNILLO ROSCA HEMBRA	2	



3KJ1010-9270

D5



4MNI200-4280

FIG. 28 METER

MEDIDOR

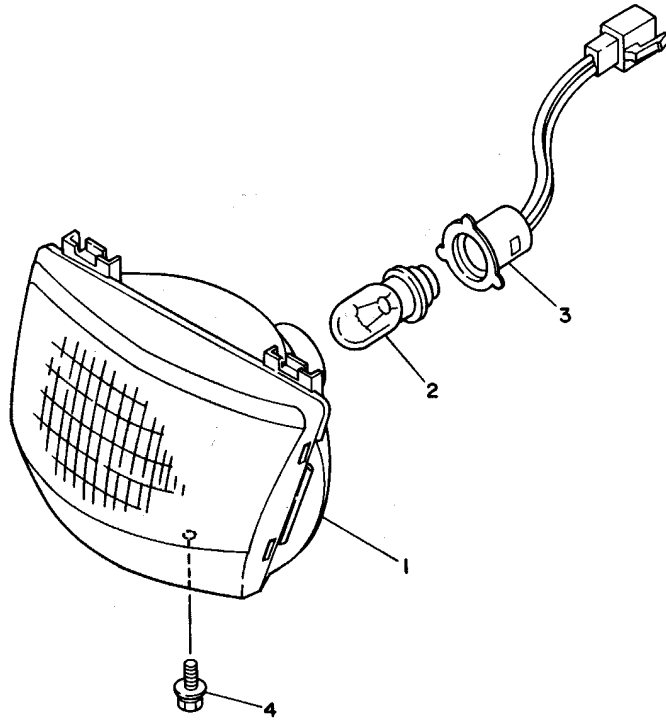
REF. NO.	PART NO. CODIGO NO.	DESCRIPTION DESCRIPCION	Q'TY CANT.	REMARKS OBSERVACION
1	3WG-83510-01	SPEEDOMETER ASSY VELOCIMETRO COMPL.	1	
2	4G1-84744-00	.BULB (12V-3.4W) .BOMBILLA (12V-3.4W)	1	
3	3GM-83517-00	.BULB (12V-1.7W) .BOMBILLA (12V-1.7W)	1	
4	3UC-83509-00	.SOCKET CORD ASSY .ENCASTRE DE CABLE COMPLETO	1	
5	98580-04010	.SCREW, PAN HEAD .TORNILLO DE CABEZA CRUZADA	2	
6	92901-04100	.WASHER, SPRING .ARANDELA PLANA	2	
7	92901-04600	.WASHER, PLATE .ARANDELA PLANA	2	
8	90159-03102	.SCREW, WITH WASHER .TORNILLO CON VALONA	3	
9	97707-50016	SCREW, TAPPING TORNILLO ROSCA HEMBRA	3	
10	4MN-83550-00	SPEEDOMETER CABLE ASSY CABLE DE VELOCIMETRO COMPLETO	1	

D6

FIG. 29 HEADLIGHT

FARO DELANTERO

REF. NO.	PART NO. CODIGO NO.	DESCRIPTION DESCRIPCION	Q'TY CANT.	REMARKS OBSERVACION
1	3KJ-84320-00	LENS ASSY LENTE COMPLETO	1	
2	1YT-84314-00	BULB (12V25/25W) BOMBILLA DE FARO DELANTERO	1	
3	3KJ-84312-00	HOLDER, SOCKET ENCASTRE	1	
4	90159-05155	SCREW, WITH WASHER TORNILLO CON VALONA	1	



3KJ1010-9290

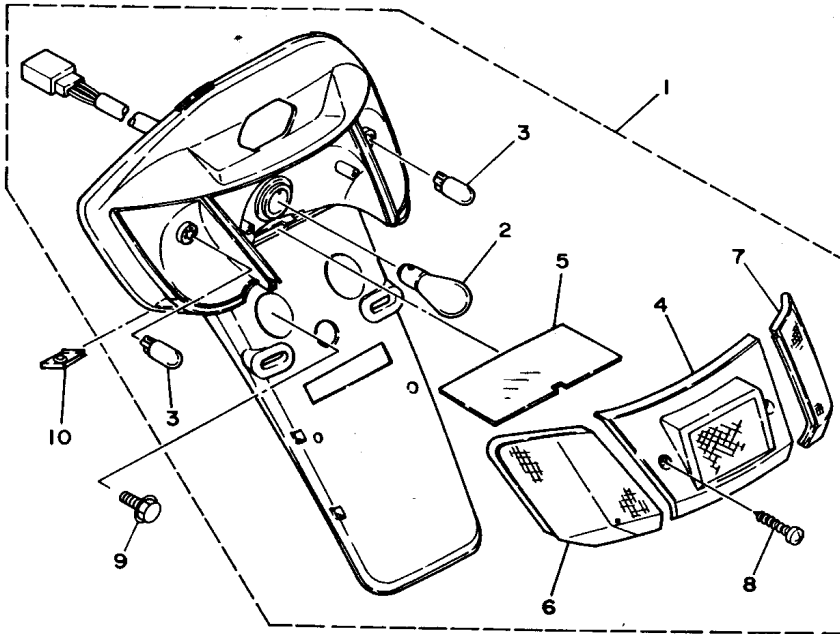
D7



FIG. 30 TAILLIGHT

LUZ DE COLA

REF. NO.	PART NO. CODIGO NO.	DESCRIPTION DESCRIPCION	Q'TY CANT.	REMARKS OBSERVACION
1	4AG-84700-01	TAILLIGHT ASSY FARO TRASERO COMPLET.	1	
2	31L-84714-00	.BULB, TAILLIGHT (12V-21/5W) .BOMBILLA (12V-21/5W)	1	
3	54V-83311-00	.BULB, FLASHER (12V-8W) .BOMBILLA (12V-8W)	2	
4	3KJ-84721-01	.LENS, TAILLIGHT .LENTE DE FARO TRASERO	1	
5	3KJ-84743-00	.LENS, LICENCE LIGHT .LENTE DE LUZ DE LICENCIA	1	
6	3KJ-83332-00	.LENS, FLASHER .LENTE DE DESTELLADOR	1	
7	3KJ-83342-00	.LENS, FLASHER 2 .LENTE DE DESTELLADOR	1	
8	97701-40618	.SCREW, TAPPING .TORNILLO, DE CABEZA CRUZADA	2	
9	90109-063F1	BOLT PERNO	2	
10	90183-05042	NUT, SPRING FUERCA DE RESORTE	2	

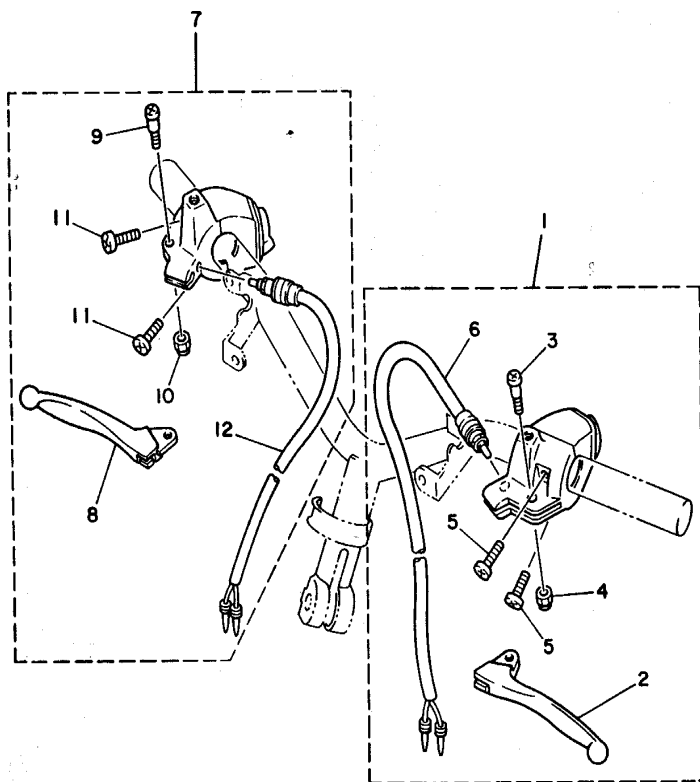


3KJ5010-2310

D8

FIG. 31 HANDLE SWITCH. LEVER

INTERRUPTOR DE MANIJA. PALANCA

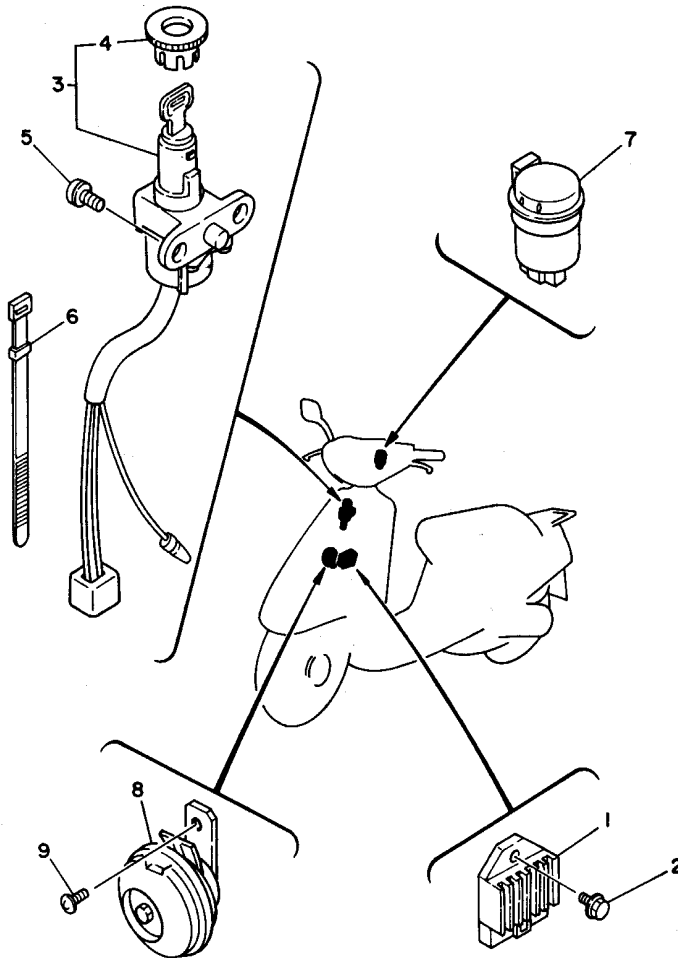


REF. NO.	PART NO. CODIGO NO.	DESCRIPTION DESCRIPCION	Q'TY CANT.	REMARKS OBSERVACION
1	3KJ-82910-01	LEVER HOLDER ASSY (LEFT) SOPORTE DE LEVA COMPLT 1	1	
2	2T4-83912-02	.LEVER 1 .PALANCA 1	1	
3	90149-06175	.SCREW .TORNILLO DE REGLAJE	1	
4	95707-05300	.NUT, FLANGE .TUERCA DE BRIDA	1	
5	98586-05016	.SCREW, PAN HEAD .TORNILLO DE CABEZA CON PLANA	2	
6	3E1-83980-02	.FRONT STOP SWITCH ASSY .INTERRUP.PARADA DELANTERO	1	
7	3KJ-82920-01	LEVER HOLDER ASSY (RIGHT) SOPORTE DE LEVA COMPLT 2	1	
8	2T4-83922-02	.LEVER 2 .PALANCA 2	1	
9	90149-06175	.SCREW .TORNILLO DE REGLAJE	1	
10	95707-05300	.NUT, FLANGE .TUERCA DE BRIDA	1	
11	98586-05016	.SCREW, PAN HEAD .TORNILLO DE CABEZA CON PLANA	2	
12	3E1-83980-02	.FRONT STOP SWITCH ASSY .INTERRUP.PARADA DELANTERO	1	



3KJ1010-9310

D9

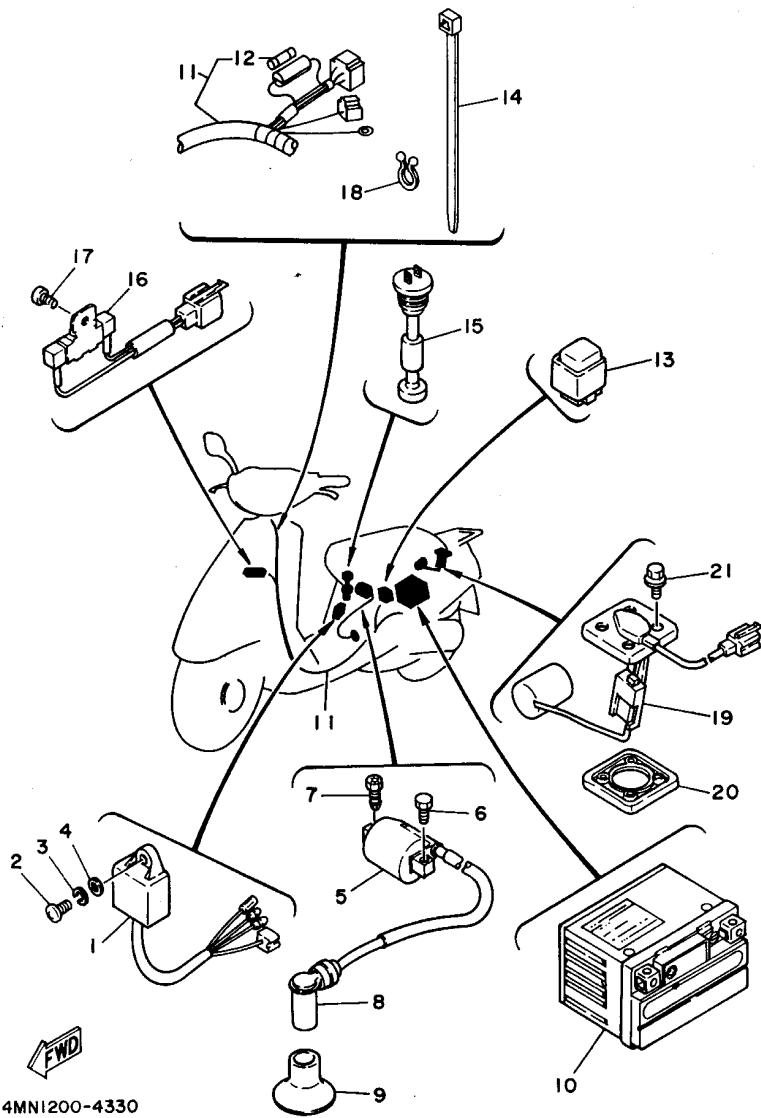


3KJ1010-9320

FIG. 32 ELECTRICAL 1

EQUIPO ELECTRICO 1

REF. NO.	PART NO. CODIGO NO.	DESCRIPTION DESCRIPCION	Q'TY CANT.	REMARKS OBSERVACION
1	4CK-81960-01	RECTIFIER & REGULATOR ASSY RECTIFICADOR Y REGULADOR.	1	
2	95027-06016	BOLT, FLANGE PERNO, DE BRIDA	1	
3	4FB-82501-00	MAIN SWITCH STEERING LOCK LLAVE DE IGNICION COMPLT	1	
4	2EX-82552-20	.CAP, SWITCH .TAPA DE INTERRUPTOR	1	
5	90149-06250	SCREW TORNILLO DE REGLAJE	2	
6	90464-13080	CLAMP BRIDA	1	
7	3CP-83350-10	FLASHER RELAY ASSY RELE DE DESTELLADOR COMPL.	1	
8	4AG-83371-00	HORN BOCINA	1	
9	98507-06010	SCREW, PAN HEAD TORNILLO DE CABEZA CON PLANA	1	



4MNI200-4330

FIG. 33 ELECTRICAL 2

EQUIPO ELECTRICO 2

REF. NO.	PART NO. CODIGO NO.	DESCRIPTION DESCRIPCION	Q'TY CANT.	REMARKS OBSERVACION
1	3KJ-85540-01	C.D.I. UNIT ASSY UNIDAD C.D.I. COMPLETA	1	
2	98507-06020	SCREW, PAN HEAD TORNILLO DE CABEZA CON PLANA	1	
3	92907-06100	WASHER ARANDELA	1	
4	92907-06600	WASHER ARANDELA	1	
5	3KJ-82310-01	IGNITION COIL ASSY BOBINA DE ENCENDIDO COMPLETA	1	
6	97007-06016	BOLT PERNO	1	
7	90153-06034	SCREW, HEXAGON TORNILLO HEXAGONAL	1	
8	56J-82370-00	PLUG CAP ASSY TAPON DE BUJIA COMPLT	1	
9	3KJ-82372-00	SEAL, PLUG CAP SELLO DE TAPON	1	
10	3UC-82100-10	BATTERY ASSY (YT4L-BS 12V-3A) BATERIA COMP. (YT4L-BS 12V-3A)	1	
11	4MN-82590-00	WIRE HARNESS ASSY CONJUNTO DE CABLES	1	
12	27V-82151-00	FUSE (7A) FUSIBLE (7A)	1	
13	29U-81950-93	RELAY ASSY RELE COMPLETO	1	
14	90464-13080	CLAMP BRIDA	4	
15	53L-85720-00	OIL LEVEL GAUGE ASSY MEDIDOR DE NIVEL DE ACEITE	1	
16	2JA-85370-00	RESISTOR ASSY RESISTOR COMPLETO	1	
17	98507-06010	SCREW, PAN HEAD TORNILLO DE CABEZA CON PLANA	1	
18	90465-18147	CLAMP BRIDA	1	
19	3KJ-85752-00	SENDER UNIT ASSY, FUEL METER UNIDAD TRANSM. MED.COMBUST.	1	
20	563-85753-00	GASKET, SENDER UNIT EMPAQUE DE UNIDAD TRANSMISORA	1	
21	90119-05071	BOLT, WITH WASHER TORNILLO CON ARANDELA	4	

D11

**INDEX**  
**INDICE**

NUMERICAL INDEX  
INDICE NUMERICO

PART NO. CODIGO NO.	REF. NO. REF. NO.	PART NO. CODIGO NO.	REF. NO. REF. NO.	PART NO. CODIGO NO.	REF. NO. REF. NO.	PART NO. CODIGO NO.	REF. NO. REF. NO.	PART NO. CODIGO NO.	REF. NO. REF. NO.	PART NO. CODIGO NO.	REF. NO. REF. NO.
4MS-F4110-00	C- 9	3VR-14341-00	B- 7	24G-16611-03	B-13	3KJ-21721-00-GE	C- 5	2T4-25137-00	C-11	4MN-28268-00	C- 3
4MS-F7111-00	C-15	14T-14343-33	B- 7	2VK-16620-00	B-13	3KJ-21721-00-P1	C- 5	2E9-25138-00	C-11	4MN-28278-00	C- 3
4FB-W2535-00	C-11	14T-14343-38	B- 7	24G-16626-00	B-13	3KJ-21721-00-4B	C- 5	3KJ-25151-00	C-11	3KJ-28300-00	D- 2
4BX-W2536-00	C-13	3KJ-14349-01	B- 7	3YJ-17410-00	B-15	4FB-21736-10	C- 5	2T4-25155-00	C-11	3KJ-28300-30	D- 2
3KJ-11111-10	B- 2	3KJ-14353-21	B- 7	3YJ-17420-00	B-15	4MN-21736-00	C- 5	25K-25159-00	C-11	4MN-28307-00	C- 3
3KJ-11181-00	B- 2	3KJ-14353-22	B- 7	3WG-17608-00	B-13	4MN-21736-10	C- 5	3YJ-25180-00-P2	C-11		C- 3
3KJ-11311-10	B- 2	14T-14384-00	B- 7	3KJ-17611-00	B-13	4MN-21751-00	C- 6	3YJ-25180-00-33	C-11	4MN-2834J-00	C- 4
4FB-11351-00	B- 2	1HV-14385-01	B- 7	2EX-17620-02	B-13	4JP-21753-00	C- 9	3YJ-25181-00	C-11	20H-28349-E0	D- 2
3KJ-11400-00	B- 3	367-14386-00	B- 7	3AA-17623-00	B-13	2N3-21771-01	C- 6	3KJ-25185-00	C-11	20H-28349-01	D- 2
3KJ-11412-00	B- 3	4GF-14392-00	B- 7	52W-17632-00	B-13	3KJ-21778-00	C- 5	3KJ-25326-00	C-13	4MN-28428-00	C- 3
3KJ-11422-00	B- 3	4MN-14411-00	B- 6	3KJ-17641-00	B-13	4MN-22210-00	C- 7	3KJ-25336-00	C-13	4MN-2848F-00	C- 3
260-11601-02	B- 3	4MN-14412-00	B- 6	1NT-17653-00	B-13	164-22216-00	B-10	3KJ-25351-00	C-13	4MN-2849F-00	C- 3
260-11601-22	B- 3	34X-1443E-00	B- 6	3GF-17660-02	B-13	4MN-23100-00	C- 8	3KJ-25355-00	C-13	2JA-81403-M0	D- 4
3CP-11631-00-96	B- 3	4MN-14437-00	B- 6	24G-17664-00	B-14	4MN-23110-00	C- 8	3KJ-25357-00	C-13	3KJ-81800-01	B-12
27V-11633-00	B- 3	4MN-14451-00	B- 6	3KJ-17684-00	B-14	4MN-23120-00	C- 8	3YJ-25390-00-P3	C-13	29U-81950-93	D-11
3CP-11636-00	B- 3	4MN-14452-00	B- 6	4MN-21110-00	C- 2	4MN-23141-00	C- 8	3YJ-25390-00-33	C-13	4CK-81960-01	D-10
2E9-11651-00	B- 3	3YJ-14453-00	B- 6	4MN-21158-01	C- 2	2E9-23143-00	C- 8	3KJ-26110-00	C-14	3UC-82100-10	D-11
1YU-11681-00	B- 3	4JP-14561-00	B- 7	3KJ-21232-01	C- 2	4MN-23191-00	C- 8	3KJ-26143-01-GE	D- 3	3KJ-82129-00	C-10
3KJ-12611-00	B- 4	3KJ-14610-12	B- 9	3KJ-21381-00	C- 7		C- 8	3KJ-26143-01-P1	D- 3	27V-82151-00	D-11
3KJ-12651-11	B- 4	3HK-14613-00	B- 9	2T4-2139X-00	C- 2	1RN-23195-00	C- 8	3KJ-26143-01-4B	D- 3	3KJ-82310-01	D-11
3YJ-12653-00	B- 4	3VR-14718-00	B- 9	3KJ-21398-00	C-10	3KJ-23411-01	C- 8	3KJ-26145-02	D- 3	56J-82370-00	D-11
4FW-12658-00	B- 4	3HK-14766-01	B- 9	3KJ-21410-00	C- 2	2E9-23412-00	C- 8	3KJ-26145-32	D- 3	3KJ-82372-00	D-11
4MN-13100-00	B- 5	4FB-14766-00	B- 9	2T4-21481-01	C- 2	2E9-23413-01	C- 8	5G3-26241-00	C-14	4FB-82501-00	D-10
3AA-13124-00	B- 5	3KJ-1490J-10	B- 7	3KJ-21481-00	C- 2	3YJ-23414-00	C- 8	5G3-26242-00	C-14	3KJ-82541-00	B-12
2GM-13178-00	B- 5	4MN-1490J-00	B- 7	3KJ-21511-00-GE	C- 3	2E9-23454-00	C- 8	2GN-26243-00	C-14	2EX-82552-20	D-10
3WF-13185-00	B- 5	3KJ-15110-01	B-10	3KJ-21511-00-P1	C- 3	3KJ-24110-01	C- 9	53L-26261-01	C-14	4MN-82590-00	D-11
1YU-13187-00	B- 5	3KJ-15120-00	B-10	3KJ-21511-00-4B	C- 3	3KJ-2414A-01	C- 9	3AA-26280-00	D- 3	12R-82591-00	C-14
50M-13342-00	B-12	1HV-15128-00	B-10	4MN-21523-00	C- 3	3KJ-24311-00	C- 9	3AA-26290-00	D- 3	3KJ-82910-01	D- 9
1YU-13473-00	B- 5	3KJ-15317-00	B-10	3WF-2153E-40	C- 3	3KJ-24500-01	C- 9	2EK-26293-00	C-14	3KJ-82920-01	D- 9
1YU-13516-00	B- 5	4J2-15363-00	B-10	3WF-2153E-60	C- 3	4X8-24565-00	C- 9	3KJ-26311-00	C-14	3KJ-83310-00	D- 5
4FK-13555-00	B- 6	3YJ-15371-00	B-10		C- 3	4JP-24602-00	C- 9	3KJ-26312-00	C-14	54V-83311-00	D- 5
1YU-13577-00	B- 5	3WG-15411-00	B-10	25G-21535-00	C-15	3FC-24705-03	C-10	1YU-26329-00	C-14		D- 5
3KJ-13610-00	B- 6	3KJ-15421-00	B-10	3KJ-21552-02	C- 3	4MN-24710-00	C-10	3KJ-26329-00	B- 8		D- 8
3KJ-13613-00	B- 6	4FB-15451-00	B-10	27V-21553-03	C- 3	3KJ-24717-00	C-10	3KJ-26341-00	C-14	3KJ-83312-00	D- 5
3KJ-13616-00	B- 6	4FB-15461-00	B-10	4MN-21557-00	B- 6	3KJ-24726-00	C-10	3KJ-26342-00	C-14	3KJ-83320-00	D- 5
4FB-13621-00	B- 6	4FB-15462-00	B-11	4MN-21575-00	C- 3	3KJ-2473R-00	C-10	3KJ-26351-01	C-14	3KJ-83322-00	D- 5
3KJ-1410A-10	B- 7	4JP-15513-00	B-12	4MN-21576-00	C- 3	3KJ-24747-00	C-10	3YJ-2637A-00	C-14	3KJ-83332-00	D- 8
4MN-1410A-00	B- 7	3KJ-15528-00	B-12	4FB-21578-10	C- 3	3KJ-2475M-00	C-10	3YJ-26372-00	C-14	3KJ-83342-00	D- 8
3YJ-14103-00	B- 7	3KJ-15532-00	B-12	4MN-21578-00	C- 3	3KJ-24842-10	C-10	3KJ-26393-00	C-14	3CP-83350-10	D-10
4JP-14104-00	B- 7	3KJ-15570-01	B-12	4MN-21578-10	C- 3	3KJ-24845-00	C- 5	4MN-27111-00	C-15	4AG-83371-00	D-10
1HV-14147-00	B- 7	3KJ-15601-00	B-12	3KJ-2171L-00	C- 5	3KJ-24846-00	C- 5	3FC-27475-20	D- 2	3UC-83509-00	D- 6
288-14161-00	B- 8	3KJ-15620-01	B-12	3KJ-2171L-30	C- 5	25K-25116-00	C-11	3FC-27475-30	D- 2	3WG-83510-01	D- 6
4MN-14301-00	B- 7	1NT-15630-01	B-12	3KJ-2171M-00	C- 5	2GM-25121-00-P8	C-11	3KJ-27481-01	C-15	3GM-83517-00	D- 6
4MS-14301-10	B- 7	4JP-15650-00	B-12	3KJ-2171M-30	C- 5	2GM-25121-00-33	C-11	3KJ-27481-31	C-15	4MN-83550-00	D- 6
3KJ-14312-25	B- 7	3KJ-15657-00	B-13	3KJ-21711-00-GE	C- 5	3L8-2513A-00	C-11	4MN-28218-00	C- 3	2T4-83912-02	D- 9
14T-14323-00	B- 7	3KJ-15659-00	B-10	3KJ-21711-00-P1	C- 5	52H-2513A-00	C-13	4MN-28228-00	C-15	2T4-83922-02	D- 9
1YU-14331-00	B- 7	32N-15673-00	B-12	3KJ-21711-00-4B	C- 5	2E9-25135-00	C-11	4MN-28238-00	D- 2	3E1-83980-02	D- 9
14T-14341-00	B- 7	3KJ-16111-00	B-13	3XV-21717-00	B- 6	2E9-25137-01	C-12	4MN-28245-00	C- 4		D- 9

NUMERICAL INDEX  
INDICE NUMERICO

PART NO. CODIGO NO.	REF. NO. REF. NO.	PART NO. CODIGO NO.	REF. NO. REF. NO.	PART NO. CODIGO NO.	REF. NO. REF. NO.	PART NO. CODIGO NO.	REF. NO. REF. NO.	PART NO. CODIGO NO.	REF. NO. REF. NO.	PART NO. CODIGO NO.	REF. NO. REF. NO.
3KJ-84312-00	D- 7	90170-10219	D- 4	90464-13080	D-10	93104-19097	D- 4	95807-08012	C-10	99009-19400	B- 5
1YT-84314-00	D- 7	90170-10317	B-13		D-11	93106-17015	C-11	95807-08016	B-10	99510-12016	B-10
3KJ-84320-00	D- 7	90176-06065	C-10	90465-18147	C-10	93109-33052	B-13	95817-08020	B- 9	99530-10014	B-10
4AG-84700-01	D- 8	90179-06411	C-14	90467-08003	B- 5	93109-34057	C-11	95817-08030	B- 9		B-10
31L-84714-00	D- 8		C-14	90467-09006	C- 9	93210-06550	B-13	95827-08012	C- 7		
3KJ-84721-01	D- 8	90179-07381	B- 2	90467-10129	C- 9	93210-07540	C-13	97007-05020	C-11		
3KJ-84743-00	D- 8	90179-28415	B-13	90467-11106	B- 6	93210-10096	C-12	97007-06016	D-11		
4G1-84744-00	D- 6	90183-05042	C- 5	90467-24140	B- 6	93210-14104	B-10	97701-40618	D- 8		
2JA-85370-00	D-11		C- 5	90468-02033	B- 5	93210-23614	B-12	97707-30605	B- 9		
3KJ-85540-01	D-11		D- 2		B- 5	93210-38687	B-14	97707-50014	D- 3		
2JA-85550-00	D- 4		D- 8	90468-12006	C- 7	93210-65752	B- 4	97707-50016	C- 3		
3KJ-85560-00	D- 4	90185-10154	C- 2		C-15	93300-63813	B-13		D- 6		
2JA-85580-M0	D- 4		C-11	90480-10468	B- 4	93306-00302	B-13	97707-50125	B- 6		
53L-85720-00	D-11		C-14	90480-12237	B- 9	93306-00316	B-10	97707-50510	D- 5		
3KJ-85752-00	D-11	90185-14150	C-13	90480-12497	B- 4		B-10	97707-60540	B- 4		
5G3-85753-00	D-11	90201-06416	C-11		B- 6	93306-20005	C-11	98501-04006	D- 4		
90101-06278	C-13	90201-06412	B-13	90501-08430	B- 5	93306-20006	B-15	98507-03008	B- 6		
90102-10031	C- 7	90201-08087	B-10	90501-10513	C-14		C-11	98507-05010	C-14		
90105-08121	C- 7	90201-08088	B-12	90501-29517	C- 2	93306-20314	B-15		D- 4		
90105-10036	C-14	90201-12175	C-10	90501-357F3	B-14	93306-20458	B- 3	98507-05014	B- 5		
90109-063F1	C-10	90201-123K4	B-15	90506-14081	C-11	93310-210M0	B- 3	98507-06010	B-13		
	D- 8	90201-133M8	B-13	90506-15260	C-13	93310-257R1	B-12		D-10		
90109-063F5	C- 9	90201-142M6	C-13	90506-32464	C-15	93310-416N7	B- 3		D-11		
90116-07353	B- 2	90201-154E9	B-12	90508-32609	B-12	93420-40064	B-15	98507-06012	B-11		
90119-05071	D-11	90201-17255	C-13	90560-10289	C-11	93450-11120	B- 3		B-12		
90119-06042	C- 6	90202-10120	C-15	90560-10360	C-11	93450-30057	C- 8	98507-06016	B- 4		
90119-06060	C-15	90208-10012	B-13	91A20-07014	B-10		C- 8		D- 4		
90119-06085	C- 3	90208-12049	B-15	91A20-07033	C- 9	93505-32002	C- 8	98507-06020	B- 4		
90149-06175	D- 9	90214-13055	B-13	91316-06020	B-13	93603-12007	B- 5		B- 6		
	D- 9	90240-10137	C-15		B-12	93900-00027	C-11		B-10		
90149-06184	C- 5	90241-10015	C-10	92901-04100	B- 8		C-13		D-11		
90149-06250	D-10	90249-12008	C-14		D- 4	94108-1002S	C-11	98507-06025	B-10		
90153-06034	D-11		C-14		D- 6		C-13	98507-06035	B-10		
90153-06052	B-12	90280-03017	B- 3	92901-04600	D- 6	94701-00227	B- 2		B-10		
90153-06061	B- 9	90380-15083	B-12	92907-03600	B- 6	95027-06016	D-10		B-10		
90159-03102	D- 6	90387-06067	B- 9	92907-06100	B- 4	95307-05600	C-11	98507-06065	B-10		
90159-05121	D- 3	90387-065X4	C-15		D-11	95607-12200	C- 2	98511-05020	D- 4		
90159-05155	D- 7	90387-067V1	B- 4	92907-06200	B- 9	95707-05300	D- 9	98580-03006	B- 7		
90159-06178	C- 3		B- 6	92907-06600	B- 4		D- 9	98580-04010	D- 6		
90159-06182	D- 2	90387-132W6	B-13		B- 4	95707-06500	C- 9	98580-04016	B- 8		
90167-05041	C- 3	90387-156U0	B- 3		B- 6		C-10	98580-05014	B- 7		
	C- 5	90445-052G4	B- 5		D-11	95707-08500	C-13	98580-06016	B- 7		
	C- 5	90445-071G6	C- 9	92907-10600	D- 4	95707-10500	C- 7	98586-05016	D- 9		
	C- 5	90445-09252	B- 5	92995-06100	B- 7	95807-06012	C- 2		D- 9		
	C-10	90445-111G1	C- 9	93101-20138	B- 3		C- 2	98907-06016	B- 9		
	D- 2	90460-32242	B- 6	93102-17342	B-13		C- 3	99009-15400	B-12		
90167-05055	C- 5	90460-33087	B- 6	93102-20371	B- 3		C- 3	99009-17400	B-10		
90170-10219	B-13	90460-41191	B- 6	93102-22314	B-15		C- 9		B-13		

*RESERVADO: EL DERECHO DE REPRODUCCION  
NO SE PUEDE REPRODUCIR NINGUNA PARTE  
DE ESTA LISTA SIN PERMISO.*

*COPY RIGHT: All rights reserved. No part of this publication  
may be reproduced without permission.*

**YAMAHA**

YAMAHA MOTOR CO., LTD.  
2500 SHINGA I IWATA SHIZUOKA JAPAN  
SERVICE INFORMATION DIV.

---

PUBLICADO EN JAPON  
Primera edición ABR., 1994

Printed in Japan  
First edition APR., 1994