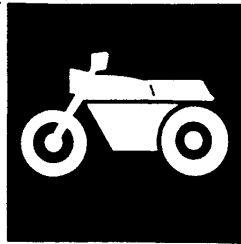


YAMAHA



**PARTS
CATALOGUE
CATALOGO
DE REPUESTOS**

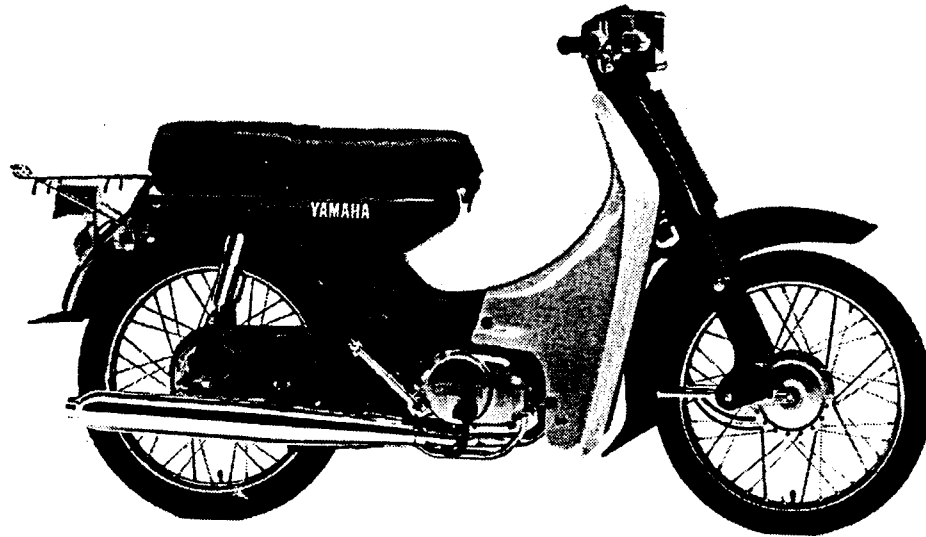
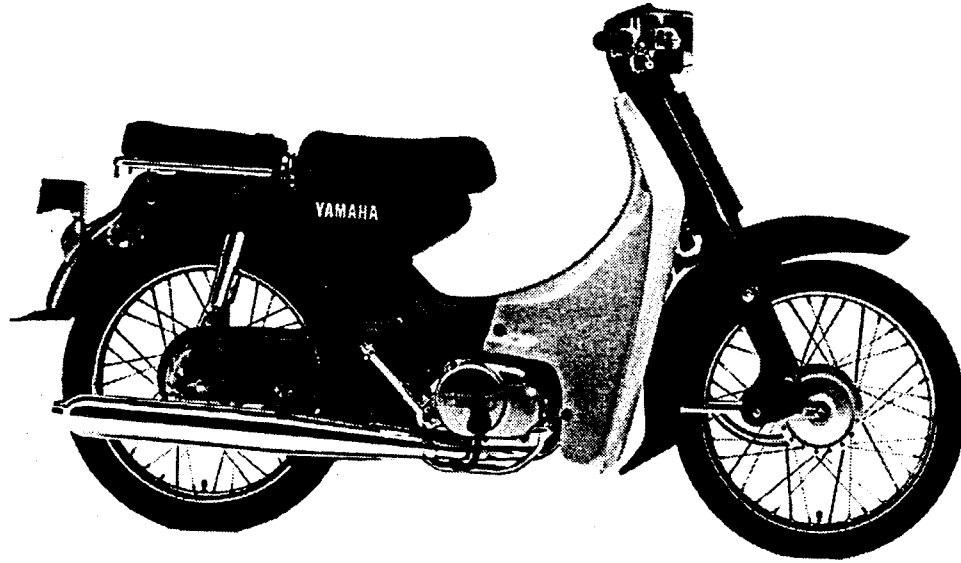
V80'98 (4GC5) C&SOUTH AMERICA

V80'98 (4GC6) C&SOUTH AMERICA

V80'98 (3NX6) COLOMBIA

YAMAHA
GENUINE
Parts & Accessories

184GC-200E1



FOREWORD

This Parts Catalogue is related to the parts for the model(s) in the below frame. When you are ordering replacement parts, please refer to this Parts Catalogue and quote both part numbers and part names correctly.

V80'98(4GC5/4GC6/3NX6)

1. Modifications or additions which have been made after issue of the Parts Catalogue will be announced in the Yamaha Parts News. It is advisable that you make necessary corrections to the Parts Catalogue according to the Yamaha Parts News.

2. Abbreviations
The Following abbreviations are used in this Parts Catalogue.

"UR" Use specified parts number.
 "UN" Use as many as needed.
 "AP" Alternate Parts
 "LM" Local Made (Parts need to be ordered locally)
 "F#" Frame No. (Applicable machine No.)

3. Parts, which are to be supplied in an assembly, are listed with a dot(.) in front of the part name as shown below.

EXAMPLE

CARBURETOR ASSY
 .JET, PILOT
 .NOZZLE, MAIN

4. Number of component for assembly
The numeral appearing to the right of each component part indicates the quantity of parts for each assembly unit.

EXAMPLE

PART NO.	DESCRIPTION	Q'TY	REMARKS
2F5-83310-60	FRONT FLASHER LIGHT ASSY	2	
115-83311-60	.BULB (6V-18W)	1	
1M1-83309-60	.REFLECTOR	1	

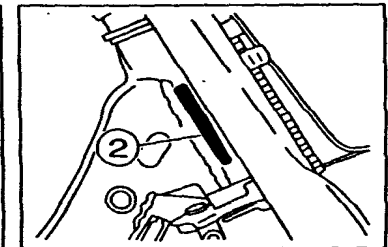
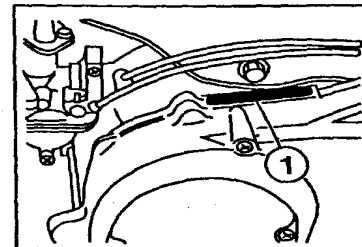
5. Applicable colors of graphics are represented in the "REMARKS" as shown below.

PART NO.	DESCRIPTION	Q'TY	REMARKS
2N4-24110-00-X5	.FUEL TANK COMP.	2	MXR
3J1-24240-10	.GRAPHIC, FUEL TANK	1	for MXR

6. Applicable Serial No.

① Engine Serial No.

② Frame Serial No.



7. Note that the illustrations for reference in finding parts numbers, not to be used for assembling. When assembling, please use the applicable service manual.
8. The asterisk (*) before a reference number indicates modification items after the first edition.

PROLOGO

Este Catálogo de Repuestos corresponde a las piezas para el(los) modelo(s) del recuadro siguiente. Al formular el pedido de repuestos, se ruega citar este Catálogo de Repuestos y especificar correctamente los números de parte y los nombres de parte.

V80'98(4GC5/4GC6/3NX6)

1. Las modificaciones y agregados que se hayan realizado después de la edición de este Catálogo de Repuestos, serán anunciados en las Informaciones de Recambios Yamaha.
2. Abreviaciones
En este Catálogo de Repuestos se emplean las siguientes abreviaciones.
"UR" Usar el número de partes especificado
"UN" Usar la cantidad necesaria
"AP" Piezas sustitutivas
"LM" Fabricación local (Partes necesarias que se pedirán localmente)
"F#" No. de bastidor aplicable
3. Las piezas suministradas como conjunto se describen con un punto (.) que precede al nombre de la pieza como se indica a continuación.

EJEMPLO

CONJUNTO CARBURADOR

.INYECTOR, piloto

.BOQUILLA, principal

4. Cantidad de componentes de un conjunto
La numeración que aparece a la derecha de cada descripción, indica la cantidad de piezas por cada unidad de conjunto.

EJEMPLO

PIEZAS NO.	DESCRIPCION	CANT.	OBSERVACION
2F5-83310-60	ENSAMBLAJE DE LA LUZ	2	
115-83311-60	.BOMBILLA (6V-1 8W)	1	
1M1-83309-60	.REFLECTOR	1	

5. Los colores de los componentes se indican como sigue en la columna de "OBSERVACIONES".

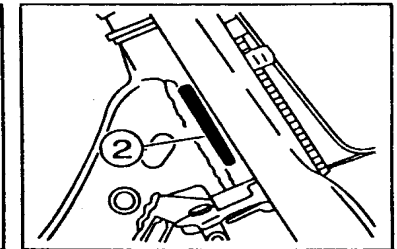
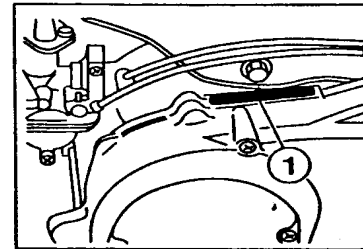
EJEMPLO

PIEZAS NO.	DESCRIPCION	CANT.	OBSERVACION
2N4-24110-00-X5	.COMP. DEL TANQUE	2	MXR
3J1-24240-10	.GRAFICO, DEL TANQUE	1	para MXR

6. Números de Serie

① No. de Serie del motor.

② No. de Serie del bastidor

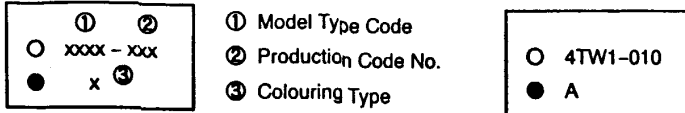


7. Debe tenerse en cuenta que las ilustraciones sirven como guía para la búsqueda de las referencias y no deben usarse para el montaje. Durante el montaje, se recomienda usar el manual de Taller correspondiente.
8. EL asterisco (*) antes del número de referencia indica los elementos modificados después de la primera edición.

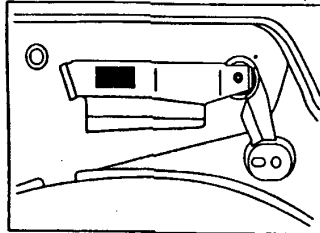
MODEL LABEL

A label called "Model Label" is affixed in the location as indicated in (3) below. When using this parts catalogue, please be sure to cross-refer the "model code - production code No." in the catalogue to the "model code - production code No." indicated on the Model Label affixed onto the product concerned.

(2) "Model Label" Indication



(3) Model Label Affixing Location



(4) Model Code - Production Code Number of Model Listed in This Parts Catalog

Model Code	Production Code No.	Country (destination)	Model Code	Production Code No.	Country (destination)
4GC5	010	DOMINICA			
4GC6	010	DOMINICA			
3NX6	010	COLOMBIA			

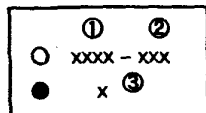
(5) Colouring Information

Model Code	Colouring type code	Colour code	Colour Name	Abbreviation
4GC5	A	0376	DEEP RED COCKTAIL 2	DRC2
4GC6	B	00H9	BLACK GOLD	BG
3NX6	C	0266	VERY DARK BLUE METALLIC 3	VDBM3

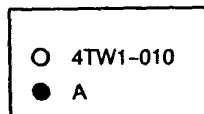
ROTULO DE MODELO

El rótulo llamada "Rótulo de Modelo" está en la ubicación indicada abajo en el (3). Cuando se utilice este catálogo de partes, se ruega cotejar entre el "código de modelo-número de código de producción" del catálogo y el "código de modelo-número de código de producción" indicado en el Rótulo de Modelo fijado en el producto correspondiente.

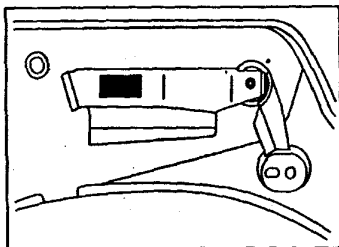
(2) Indicación del "Rótulo de Modelo"



- ① Código de tipo de Modelo
- ② Número de código de Producción
- ③ Tipo de color



(3) Ubicación de fijación del Rótulo de Modelo



(4) Código de Modero-Número de código de Producción del Modelo Listado en este Catálogo de Partes

Código de Modelo	Número de Código de Producción	Pais(destine)	Código de Modelo	Número de Código de Producción	Pais(destine)
4GC5	010	DOMINICA			
4GC6	010	DOMINICA			
3NX6	010	COLOMBIA			

(5) Información de Color

Código de Modelo	Código de tipo de color	Código de color	Nombre de color	Abreviatura
4GC5	A	0376	DEEP RED COCKTAIL 2	DRC2
4GC6	B	00H9	BLACK GOLD	BG
3NX6	C	0266	VERY DARK BLUE METALLIC 3	VDBM3

CONTENTS

ENGINE

CYLINDER	B2
CRANKSHAFT, PISTON	B3
OIL PUMP	B4
INTAKE	B5
CARBURETOR	B7
EXHAUST	B9
CRANKCASE	B10
CRANKCASE COVER 1	B11
STARTER	B12
CLUTCH	B13
TRANSMISSION	B15
SHIFT CAM. FORK	C2
SHIFT SHAFT	C3

CHASSIS

FRAME	C4
FENDER	C5
SIDE COVER	C6
OIL TANK	C8
REAR ARM. SUSPENSION	C9
STEERING	C11
FRONT FORK	C12
FUEL TANK	C14
SEAT	C15
SEAT 2	D2
FRONT WHEEL	D3
REAR WHEEL	D5
STEERING HANDLE. CABLE	D7
STAND. FOOTREST	D9
LEG SHIELD	D11
GENERATOR	D12
FLASHER LIGHT	D13

METER	D15
HEADLIGHT	E2
TAILLIGHT	E3
TAILLIGHT 2	E4
HANDLE SWITCH. LEVER	E5
ELECTRICAL 1	E6
ELECTRICAL 2	E8

INDEX

NUMERICAL INDEX	M1
-----------------------	----

CONTENIDO

MOTOR

CILINDRO	B2
CIGUENAL. PISTON	B3
BOMBA DE ACEITE	B4
ADMISION	B5
CARBURADOR	B7
DESCARGA	B9
CARTER	B10
CUBIERTA DE CARTER 1	B11
ARRANQUE	B12
EMBRAGUE	B13
TRANSMISION	B15
LEVA DE CAMBIO. HORQ	C2
EJE DE CAMBIO. PEDAL	C3

SHASIS

CUADRO	C4
GUARDABARRO	C5
CUBIERTA LATERAL	C6
DEPOSITO DE ACEITE	C8
BRAZO TRASERO. SUSPENSION	C9
DIRECCION	C11
HORQUILLA DELANTERA	C12
DEPOSITO DE COMBUSTIBLE	C14
ASIENTO	C15
ASIENTO 2	D2
RUEDA DELANTERA	D3
RUEDA TRASERA	D5
MANUBRIO. CABLE	D7
SOPORTE. APOYAPIE	D9
PATA PROTEGIDA	D11
GENERADOR	D12
LUZ DE DESTELLADOR	D13

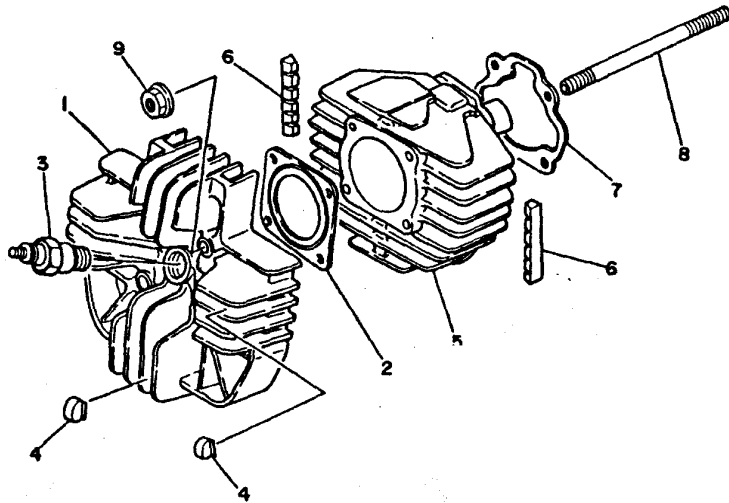
MEDIDOR	D15
FARO DELANTERO	E2
LUZ DE COLA	E3
LUZ DE COLA 2	E4
INTERRUPTOR DE MANIJA. PALANCA	E5
EQUIPO ELECTRICO 1	E6
EQUIPO ELECTRICO 2	E8

INDICE

NUMERICAL INDEX	M1
-----------------------	----

FIG. 1 CYLINDER

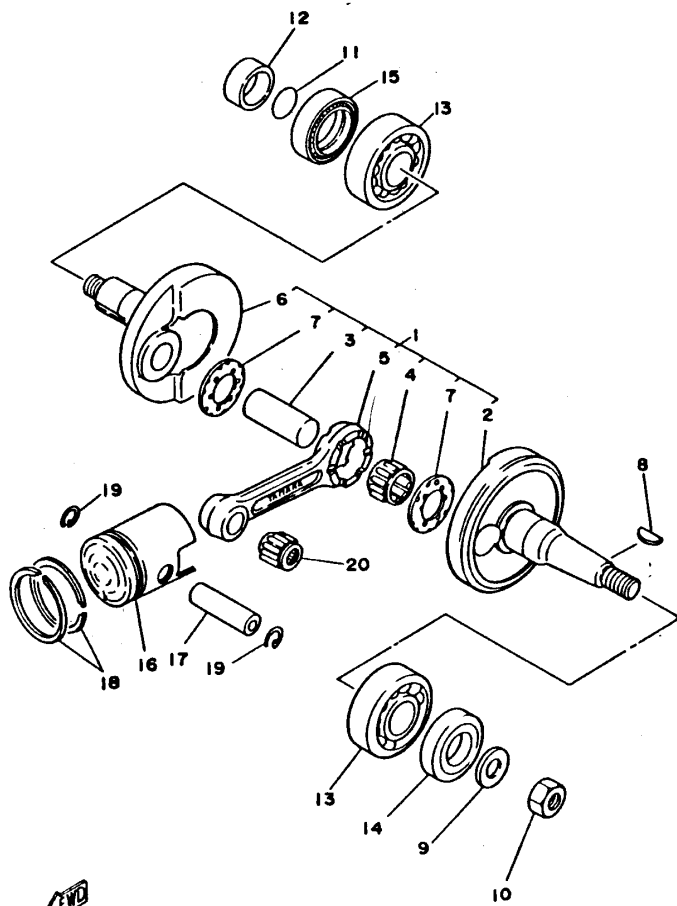
CILINDRO



REF. NO.	PART NO. CODIGO NO.	DESCRIPTION DESCRIPTION	4GC6	4GC5	3NX6	REMARKS OBSERVACION
1	5T0-11111-00	HEAD, CYLINDER 1 CULATA CILINDRO 1	1	1	1	
2	35X-11181-00	GASKET, CYLINDER HEAD 1 JUNTA, DE CULATA 1	1	1	1	
3	94701-00108	PLUG, SPARK (NGK BP6HS) BUJIA (NGK BP6HS)	1	1	1	UR
	94701-00175	PLUG, SPARK (ND-W20FP) BUJIA (ND-W20FP)	1	1	1	UR
4	463-11181-01	ABSORBER 1 AMORTIGUADOR 1	9	9	9	
5	18E-11311-00	CYLINDER 1 CILINDRO 1	1	1	1	
6	3E5-11162-00	ABSORBER 2 AMORTIGUADOR 2	2	2	2	
7	4AW-11351-00	GASKET, CYLINDER JUNTA, DE CILINDRO	1	1	1	
8	90116-07035	BOLT, STUD ESPARRAGO	4	4	4	
9	90179-07381	NUT TUERCA	4	4	4	



3NX3200-4010

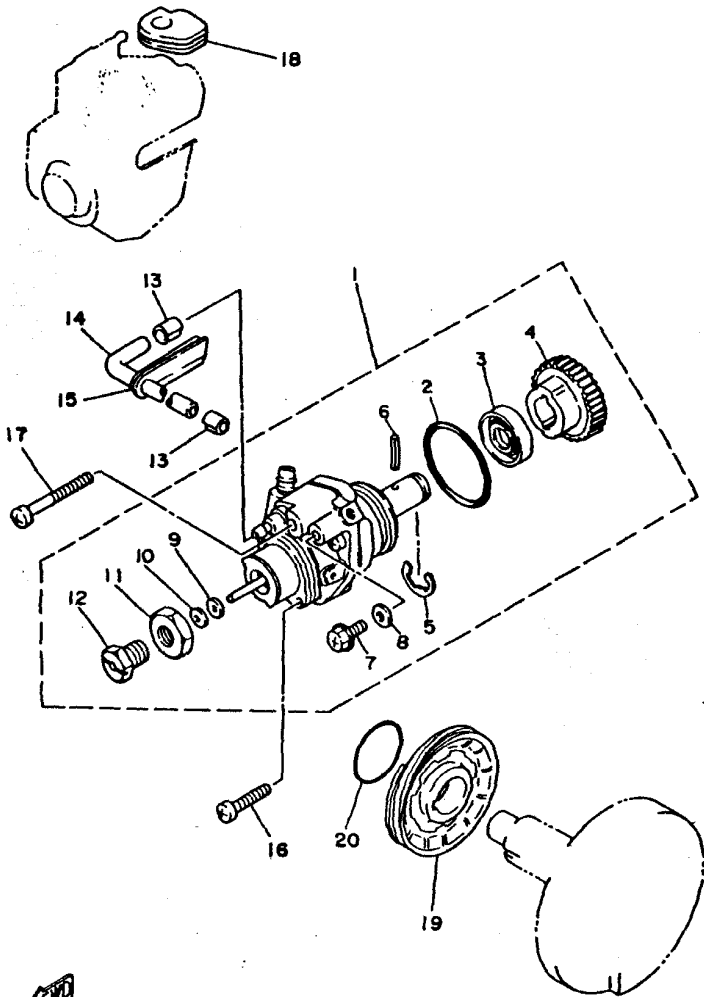


4GC3200-6020

FIG. 2 CRANKSHAFT. PISTON CIGUENAL. PISTON

REF. NO.	PART NO. CODIGO NO.	DESCRIPTION DESCRIPTION	4GC8	4GC5	3NX6	REMARKS OBSERVACION
1	1HA-11400-00	CRANKSHAFT ASSY CIGUENAL COMPLETO	1	1	1	
2	1W7-11412-00	.CRANK 1 .MANIVELA 1	1	1	1	
3	2Y1-11681-00	.PIN, CRANK 1 .PASADOR MANIVELA 1	1	1	1	
4	93310-420F2	.BEARING .COJINETE	1	1	1	
5	1W7-11651-00	.ROD, CONNECTING .BIELA	1	1	1	
6	1HA-11422-00	.CRANK 2 .MANIVELA 2	1	1	1	
7	90209-20159	.WASHER .ARANDELA DE SEPARACION	2	2	2	
8	90280-03017	KEY, WOODRUFF CUNA WOODRUFF	1	1	1	
9	90201-12535	WASHER, PLATE ARANDELA PLANA	1	1	1	
10	95317-12600	NUT TUERCA	1	1	1	
11	93210-18023	O-RING ANILLO O	1	1	1	
12	90387-20603	COLLAR CASQUILLO CON VALONA	1	1	1	
13	93306-20517	BEARING (B6205) COJINETE	2	2	2	
14	93103-25098	OIL SEAL SELLO ACEITE	1	1	1	
15	93103-32099	OIL SEAL SELLO ACEITE	1	1	1	
16	18E-11631-00-96	PISTON (STD) PISTON(STD)	1	1	1	
	18E-11635-00	PISTON (0.25MM O/S) PISTON (0.25MM O/S)	1	1	1	AP
	18E-11636-00	PISTON (0.50MM O/S) PISTON (0.50MM O/S)	1	1	1	AP
17	527-11633-00	PIN, PISTON PASADOR, PISTON	1	1	1	
18	14N-11610-00	PISTON RING SET (STD) JUEGO DE AROS (ESTD)	1	1	1	
	14N-11610-10	PISTON RING SET (0.25MM O/S) JUEGO DE AROS (0.25MM O/S)	1	1	1	AP
	14N-11610-20	PISTON RING SET (0.50MM O/S) JUEGO DE AROS (0.50MM O/S)	1	1	1	AP
19	93450-13022	CIRCLIP BOLA	2	2	2	
20	93310-11268	BEARING COJINETE	1	1	1	

B3



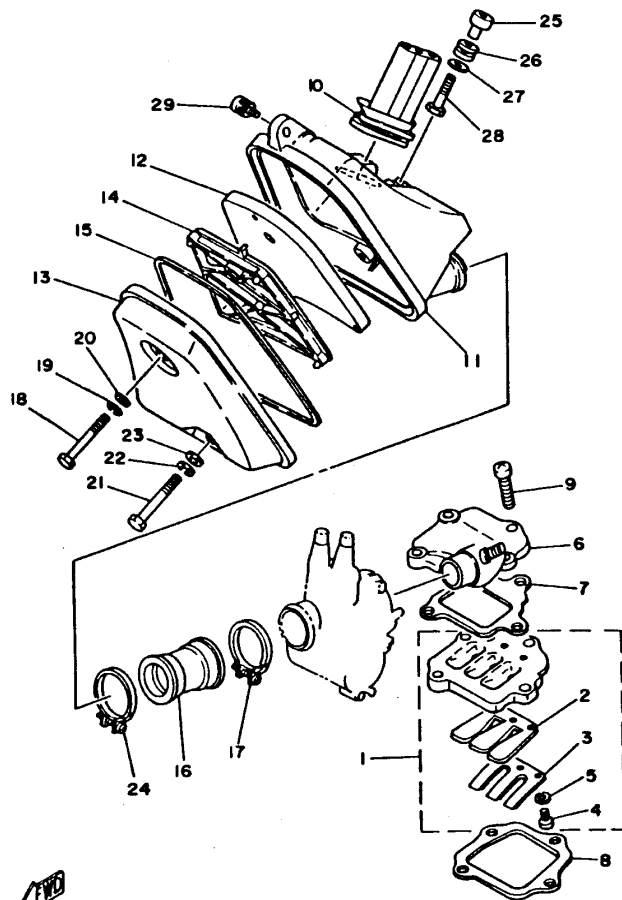
4GC3200-6030

FIG. 3 OIL PUMP

BOMBA DE ACEITE

REF. NO.	PART NO. CODIGO NO.	DESCRIPTION DESCRIPTION				REMARKS OBSERVACION
			4GC6	4GC5	3NX6	
1	18E-13101-00	OIL PUMP ASSY BOMBA DE ACEITE COMPLETA	1	1	1	
2	93210-26240	.O-RING .ANILLO O	1	1	1	
3	93101-10001	.OIL SEAL .SELLO ACEITE	1	1	1	
4	2T5-13124-00	.GEAR, WORM WHEEL (71T) .ENGREJE ROSCA SINFIN (71T)	1	1	1	
5	93430-07012	.CIRCLIP BOLA	1	1	1	
6	91609-30014	.PIN, SPRING .PASADOR DE RESORTE	1	1	1	
7	90149-04135	.SCREW .TORNILLO DE REGLAJE	1	1	1	
8	90430-04004	.GASKET .JUNTA	1	1	1	
9	296-13147-00	.SHIM .CUNA	1	1	1	
10	384-13138-00	.PLATE, ADJUSTING .PLACA DE AJUSTE	1	1	1	
11	90170-10105	.NUT .TUERCA	1	1	1	
12	90401-10029	.BOLT, UNION .PERNO DE UNION	1	1	1	
13	90468-02033	CLIP PRESILLA	2	2	2	
14	384-13161-02	PIPE, DELIVERY 1 TUBO CONDUCTOR 1	1	1	1	
15	90480-10005	GROMMET TAPON	1	1	1	
16	98507-05020	SCREW, PAN HEAD TORNILLO DE CABEZA CON PLANA	1	1	1	
17	98507-05035	SCREW, PAN HEAD TORNILLO DE CABEZA CON PLANA	1	1	1	
18	384-13174-00	HOLDER, OIL PIPE SOPORTE, TUBO DE ACEITE	1	1	1	
19	53F-13178-00	GEAR, PUMP DRIVE ENGRANAJE TRACC.DE BOMBA	1	1	1	
20	93210-29282	O-RING ANILLO O	1	1	1	

B4

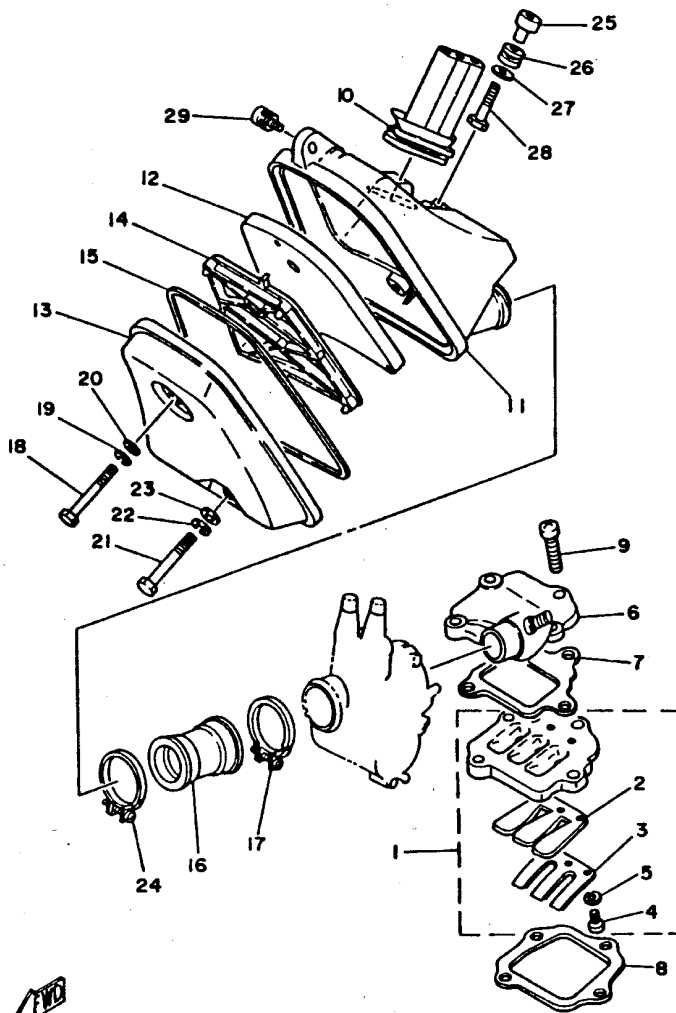


4GC1600-3040

FIG. 4 INTAKE ADMISION

REF. NO.	PART NO. CODIGO NO.	DESCRIPTION DESCRIPTION	4GC8	4GC5	3NX6	REMARKS OBSERVACION
1	4GC-13610-00	REED VALVE ASSY VALVULA DE LAMINAS COMPLETA	1	1	1	
2	300-13613-03	.REED, VALVE .VALVULA DE LAMINAS	1	1	1	
3	300-13616-00	.STOPPER, REED VALVE .TOPE DE VALVULA DE LAMINAS	1	1	1	
4	98507-03008	.SCREW, PAN HEAD .TORNILLO DE CABEZA CON PLANA	3	3	3	
5	92907-03100	.WASHER .ARANDELA	3	3	3	
6	300-13505-03	JOINT, PUMP UNION DE BOMBA	1	1	1	
7	300-13622-10	GASKET, VALVE SEAT EMPAQUE DE ASIENTO VALVULA	1	1	1	
8	300-13621-10	GASKET, VALVE SEAT JUNTA, DE VALV.DE EMPAQUE	1	1	1	
9	98507-06030	SCREW, PAN HEAD TORNILLO DE CABEZA CON PLANA	4	4	4	
10	5U8-14454-00	JOINT PASADOR DE PALANCA	1	1	1	
11	18A-14411-00	CASE, AIR CLEANER 1 CAJA FILTRO DEL AIRE 1	1	1	1	
12	35X-14451-00	ELEMENT, AIR CLEANER ELEMENTO DEL FILTRO DEL AIRE	1	1	1	
13	35X-14412-00	CAP, CLEANER CASE 1 TAPA CAJA DEL FILTRO 1	1	1	1	
14	5U8-14458-00	GUIDE GUIA	1	1	1	
15	5U8-14457-00	SEAL SELLO	1	1	1	
16	1W7-14453-01	JOINT, AIR CLEANER 1 UNION DEL FILTRO DEL AIRE 1	1	1	1	
17	90460-37026	CLAMP, HOSE BRIDA, DE UNION	1	1	1	
18	97007-06045	BOLT PERNO	1	1	1	
19	92907-06100	WASHER, SPRING ARANDELA	1	1	1	
20	92907-06600	WASHER, PLATE ARANDELA	1	1	1	
21	97007-06040	BOLT PERNO	1	1	1	
22	92907-06100	WASHER, SPRING ARANDELA	1	1	1	
23	92907-06600	WASHER, PLATE ARANDELA	1	1	1	
24	90460-37026	CLAMP, HOSE BRIDA, DE UNION	1	1	1	
25	90387-062F5	COLLAR CASQUILLO CON VALONA	1	1	1	
26	90480-12314	'GROMMET' TAPON	1	1	1	
27	90201-06778	WASHER, PLATE ARANDELA PLANA	1	1	1	

B5



4GC1600-3040

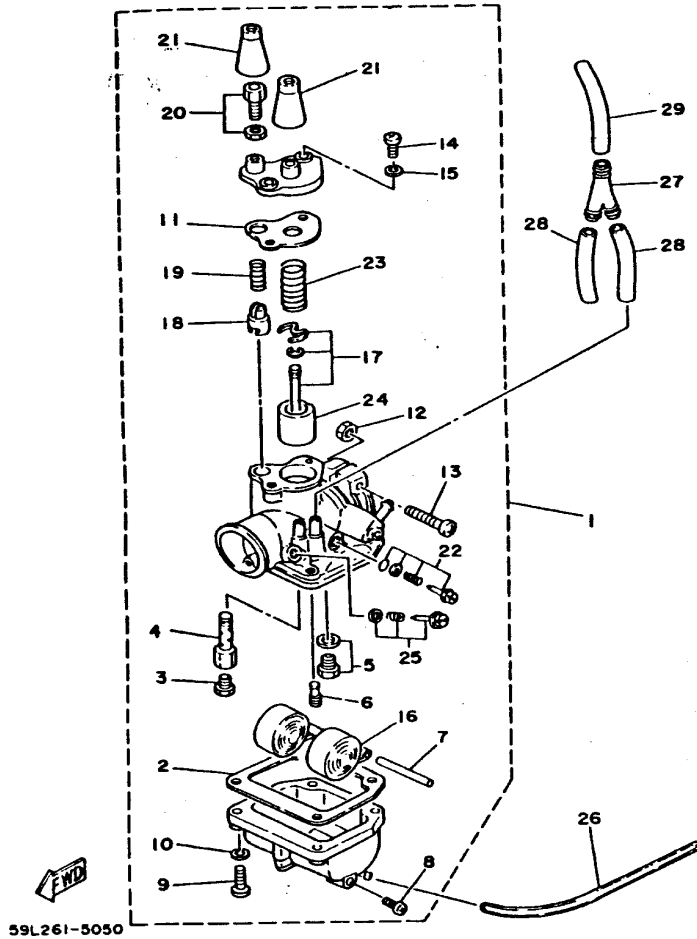
FIG. 4 INTAKE ADMISION

REF. NO.	PART NO. CODIGO NO.	DESCRIPTION DESCRIPTION	4GC6	4GC5	3NX6	REMARKS OBSERVACION
28	97007-06030	BOLT PERNO	1	1	1	
29	90159-06056	SCREW, WITH WASHER TORNILLO CON VALONA	1	1	1	

B6

FIG. 5 CARBURETOR

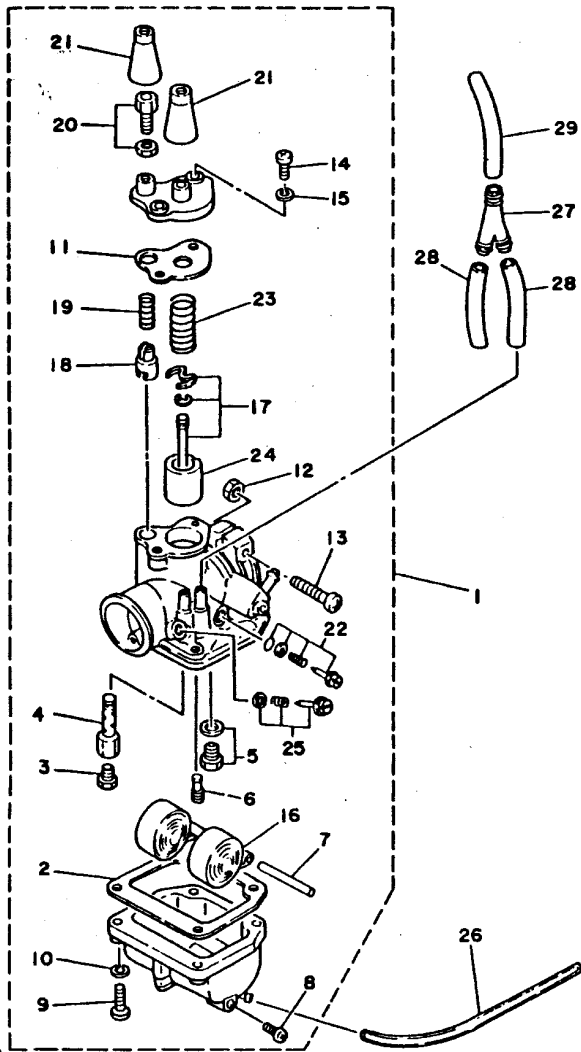
CARBURADOR



59L261-5050

REF. NO.	PART NO. CODIGO NO.	DESCRIPTION DESCRIPTION	4GC6	4GC5	3NX6	REMARKS OBSERVACION
1	59L-14101-00	CARBURETOR ASSY 1 CARBURADOR COMPLETO 1	1	1	1	
2	296-14184-01	.GASKET, FLOAT CHAMBER .JUNTA, CAMARA DE FLOT	1	1	1	
3	18A-14143-17	.JET, MAIN (# 85) .SURTIDOR, PRINCIPAL (# 85)	1	1	1	
4	45V-14141-12	.NOZZLE, MAIN .BOQUILLA PRINCIPAL	1	1	1	
5	21W-14107-12	.NEEDLE VALVE SET .VALVULA DE AGUJA	1	1	1	
6	193-14142-17	.JET, PILOT (#17.5) .SURTIDOR DE RALENTI (# 17.5)	1	1	1	
7	127-14186-00	.PIN, FLOAT .PASADOR DE LA BOYA	1	1	1	
8	12R-14191-00	.PLUG, DRAIN .TORNILLO, DE DRENAJE	1	1	1	
9	98501-04018	.SCREW, PAN HEAD .TORNILLO DE CABEZA CON PLANA	4	4	4	
10	92901-04100	.WASHER, SPRING .ARANDELA	4	4	4	
11	296-14198-00	.GASKET .EMPAQUE	1	1	1	
12	98802-05100	.NUT .TUERCA	1	1	1	
13	98502-05030	.SCREW, PAN HEAD .TORNILLO DE CABEZA CON PLANA	1	1	1	
14	98501-04010	.SCREW, PAN HEAD .TORNILLO DE CABEZA CON PLANA	2	2	2	
15	92901-04100	.WASHER, SPRING .ARANDELA	2	2	2	
16	2E9-14185-00	.FLOAT .BOYA	1	1	1	
17	59L-1490J-00	.NEEDLE SET .CJTO. AGUJA	1	1	1	
18	127-14171-00	.PLUNGER, STARTER .EMBOLO DE ARRANQUE	1	1	1	
19	127-14135-00	.SPRING, PLUNGER .RESORTE EMBOLO	1	1	1	
20	18A-14106-00	.CABLE ADJUST SCREW SET .TORNILLO AJUSTADOR DE CABLE	1	1	1	
21	307-14169-10	.CAP .FUNDA	2	2	2	
22	18A-14103-00	.THROTTLE SCREW SET .CJTO. TORNILLO DEL RALENTI	1	1	1	
23	296-14131-00	.SPRING, THROTTLE VALVE .RESORTE VALVULA DE ACELERACION	1	1	1	
24	45V-14112-25	.VALVE, THROTTLE 1 .VALVULA DE ACELERACION 1	1	1	1	
25	59L-14104-00	.AIR SCREW SET .CJTO. TORNILLO DE AIRE	1	1	1	
26	90445-05390	.HOSE .TUBO	1	1	1	
27	90413-05015	.WAY 3 .UNION	1	1	1	

B7

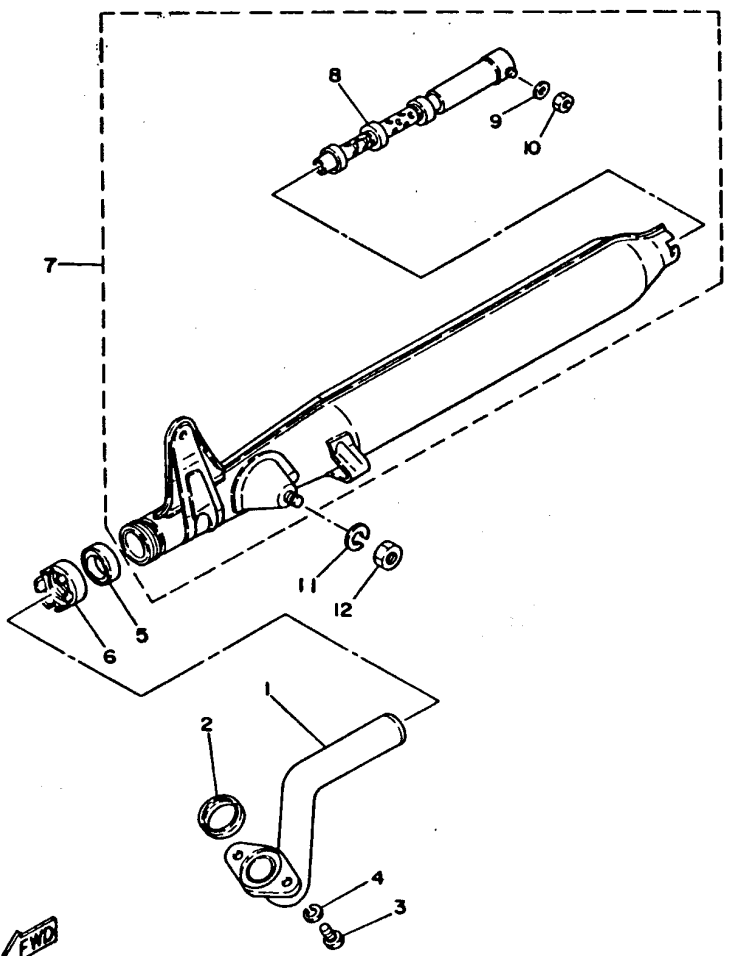


39L261-5050

FIG. 5 CARBURETOR

CARBURADOR

REF. NO.	PART NO. CODIGO NO.	DESCRIPTION DESCRIPTION	4GC6	4GC5	3NX6	REMARKS OBSERVACION
28	90445-070A7	HOSE TUBO	2	2	2	
29	90445-070A8	HOSE TUBO	1	1	1	



59L261-5060

FIG. 6 EXHAUST DESCARGA

REF. NO.	PART NO. CODIGO NO.	DESCRIPTION DESCRIPTION	4GC6	4GC5	3MX6	REMARKS OBSERVACION
1	1W7-14611-01	PIPE, EXHAUST 1 TUBO DE ESCAPE 1	1	1	1	
2	3MT-14613-00	GASKET, EXHAUST PIPE JUNTA, TUBO DE ESCAPE	1	1	1	
3	97007-08020	BOLT PERNO	2	2	2	
4	92907-08100	WASHER, SPRING ARANDELA	2	2	2	
5	4AW-14714-01	GASKET, MUFFLER EMPAQUE DE SILENCIADOR	1	1	1	
6	109-14713-00	NUT, MUFFLER JOINT TUERCA DE UNION SILENCIADOR	1	1	1	
7	35X-14710-00	MUFFLER ASSY 1 TUBO DE ESCAPE COMPLETO 1	1	1	1	
8	527-14753-50	SILENCER, EXHAUST SILENCIADOR DE ESCAPE	1	1	1	
9	92907-05600	WASHER, PLATE ARANDELA	1	1	1	
10	95307-05600	NUT TUERCA	1	1	1	
11	92907-08100	WASHER, SPRING ARANDELA			1	
12	95607-08200	NUT, SELF-LOCKING TUERCA DE AUTO-CIERRE	1	1		
	95307-08700	NUT TUERCA			1	

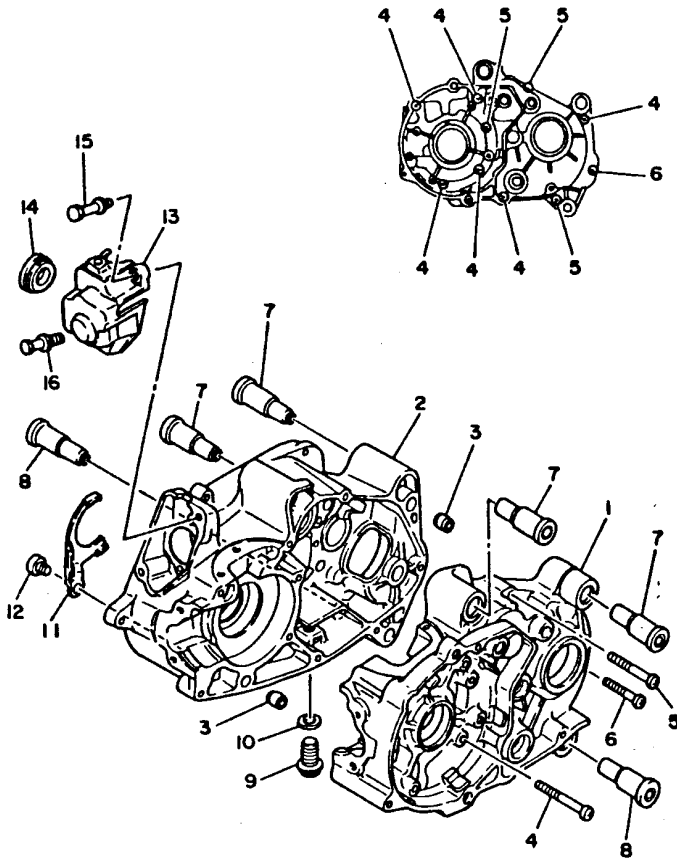


FIG. 7 CRANKCASE

CARTER

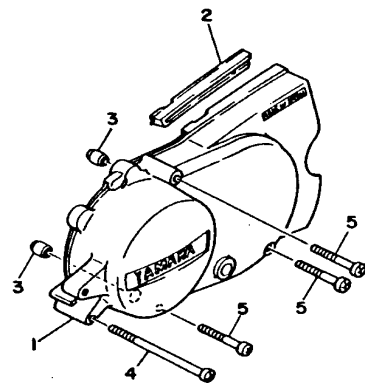
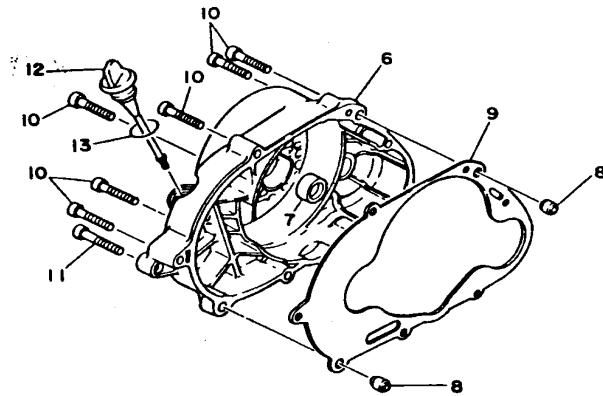
REF. NO.	PART NO. CODIGO NO.	DESCRIPTION DESCRIPTION	4G08	4G05	3NX6	REMARKS OBSERVACION
1	1W7-15111-03	CRANKCASE 1 CARTER MANIVELA 1	1	1	1	
2	1W7-15121-03	CRANKCASE 2 CARTER MANIVELA 2	1	1	1	
3	99530-12018	PIN, DOWEL PASADOR, DE ESPIGA	2	2	2	
4	98507-06050	SCREW, PAN HEAD TORNILLO DE CABEZA CON PLANA	6	6	6	
5	98507-06045	SCREW, PAN HEAD TORNILLO DE CABEZA CON PLANA	3	3	3	
6	98507-06035	SCREW, PAN HEAD TORNILLO DE CABEZA CON PLANA	1	1	1	
7	5T9-15318-01	DAMPER, ENGINE MOUNT 1 AMORT. MONTANTE MOTOR 1	4	4	4	
8	5U8-15318-01	DAMPER, ENGINE MOUNT 1 AMORT. MONTANTE MOTOR 1	2	2	2	
9	90340-12005	PLUG, STRAIGHT SCREW TORNILLO, DE DRENAJE	1	1	1	
10	90430-12227	GASKET JUNTA	1	1	1	
11	300-15128-00	HOLDER SOPORTE	1	1	1	
12	98507-08010	SCREW, PAN HEAD TORNILLO DE CABEZA CON PLANA	1	1	1	
13	517-15418-01	COVER, OIL PUMP CUBIERTA DE BOMBA DE ACEITE	1	1		
	3NX-E5418-00	COVER, OIL PUMP CUBIERTA DE BOMBA DE ACEITE			1	
14	90480-21038	GROMMET TAPON	1	1	1	
15	90149-06157	SCREW TORNILLO DE REGLAJE	1	1	1	
16	90101-06394	BOLT TORNILLO	1	1	1	

3AB010-8070

B10

FIG. 8 CRANKCASE COVER 1

CUBIERTA DE CARTER 1



3T5700-5080

REF. NO.	PART NO. CODIGO NO.	DESCRIPTION DESCRIPTION	4G06	4G05	3NX6	REMARKS OBSERVACION
1	2N8-15411-00	COVER, CRANKCASE 1 CUBIERTA DE CARTER 1	1	1	1	
2	1W7-15492-00	COVER CUBIERTA	1	1		
	3NX-E5492-00	COVER CUBIERTA			1	
3	99530-10114	PIN, DOWEL PASADOR, DE ESPIGA	2	2	2	
4	98507-06100	SCREW, PAN HEAD TORNILLO DE CABEZA CON PLANA	1	1	1	
5	98507-06045	SCREW, PAN HEAD TORNILLO DE CABEZA CON PLANA	3	3	3	
6	517-15421-01	COVER, CRANKCASE 2 TAPA DE CARTER DERECHA	1	1	1	
7	93104-11053	OIL SEAL SELLO ACEITE	1	1	1	
8	99530-10114	PIN, DOWEL PASADOR, DE ESPIGA	2	2	2	
9	4AW-15451-00	GASKET, CRANKCASE COVER 1 EMPAQ DE CUBIERTA DE CARTER	1	1	1	
10	98507-06035	SCREW, PAN HEAD TORNILLO DE CABEZA CON PLANA	6	6	6	
11	98507-06040	SCREW, PAN HEAD TORNILLO DE CABEZA CON PLANA	1	1	1	
12	517-15362-02	PLUG, OIL LEVEL TAPON DEL NIVEL DE ACEITE	1	1	1	
13	93210-19123	O-RING ANILLO O	1	1	1	

B11

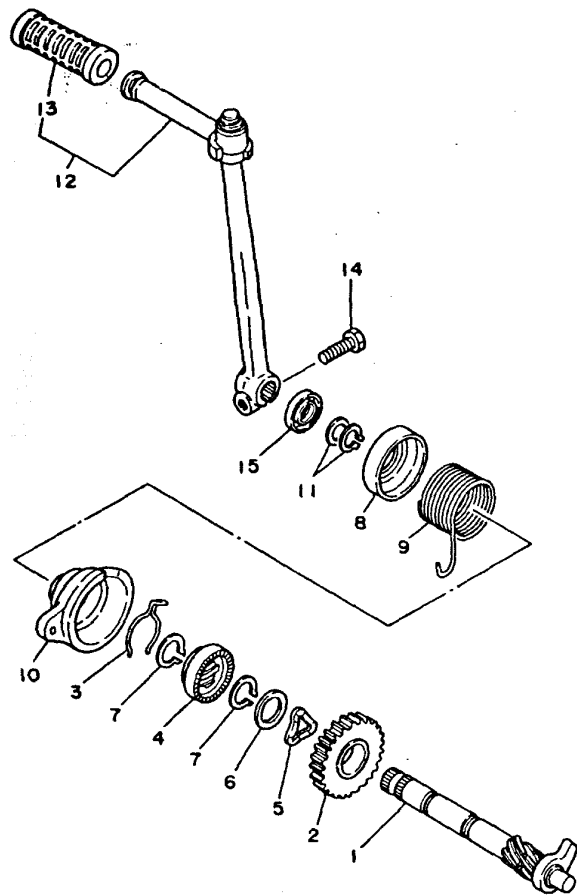


FIG. 9 STARTER

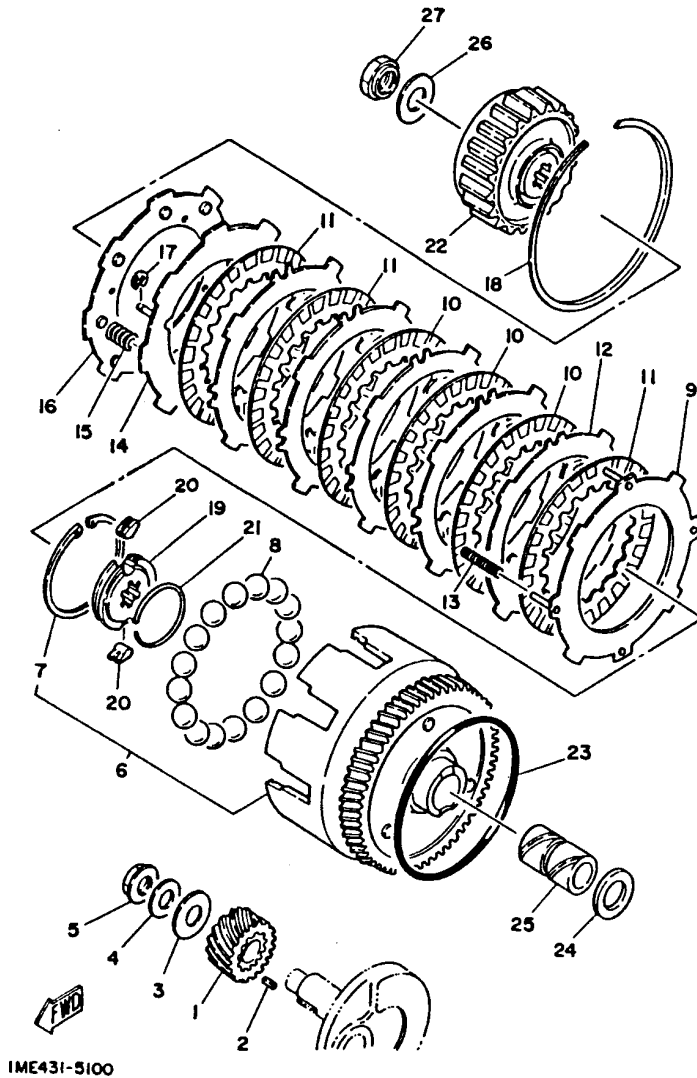
ARRANQUE

REF. NO.	PART NO. CODIGO NO.	DESCRIPTION DESCRIPTION	4G08	4G05	3NX6	REMARKS OBSERVACION
1	517-15660-01	KICK AXLE ASSY EJE DEL PEDAL DE ARRAN.COMPLET	1	1	1	
2	3K7-15641-00	GEAR, KICK (21T) NEGRANAJE PEDAL ARRANQUE (21T)	1	1	1	
3	90468-26046	CLIP PRESILLA	1	1	1	
4	296-15671-00	WHEEL, RATCHET RUEDA DE TRINQUETE	1	1	1	
5	90206-19027	WASHER, WAVE ARANDELA ONDULADA	1	1	1	
6	296-15644-00	SHIM CUNA	1	1	1	
7	99009-19400	CIRCLIP PRESILLA REDONDA	2	2	2	
8	1W7-15676-00	COVER, SPRING CUBIERTA DE RESORTE	1	1	1	
9	90508-26136	SPRING, TORSION RESORTE DE TORSION	1	1	1	
10	1W7-15664-01	GUIDE, SPRING GUIA DE RESORTE	1	1	1	
11	99009-15400	CIRCLIP PRESILLA REDONDA	2	2	2	
12	5T9-15620-00 3NX-E5620-00	KICK CRANK ASSY MANIVELA DE PEDAL COMPLETA KICK CRANK ASSY MANIVELA DE PEDAL COMPLETA	1	1	1	
13	156-15618-01 3NX-E5618-00	COVER, KICK LEVER GOMA PROTECTORA, PEDAL COVER, KICK LEVER GOMA PROTECTORA, PEDAL	1	1	1	
14	97017-06025	BOLT PERNO	1	1	1	
15	93109-15001	OIL SEAL SELLO ACEITE	1	1	1	

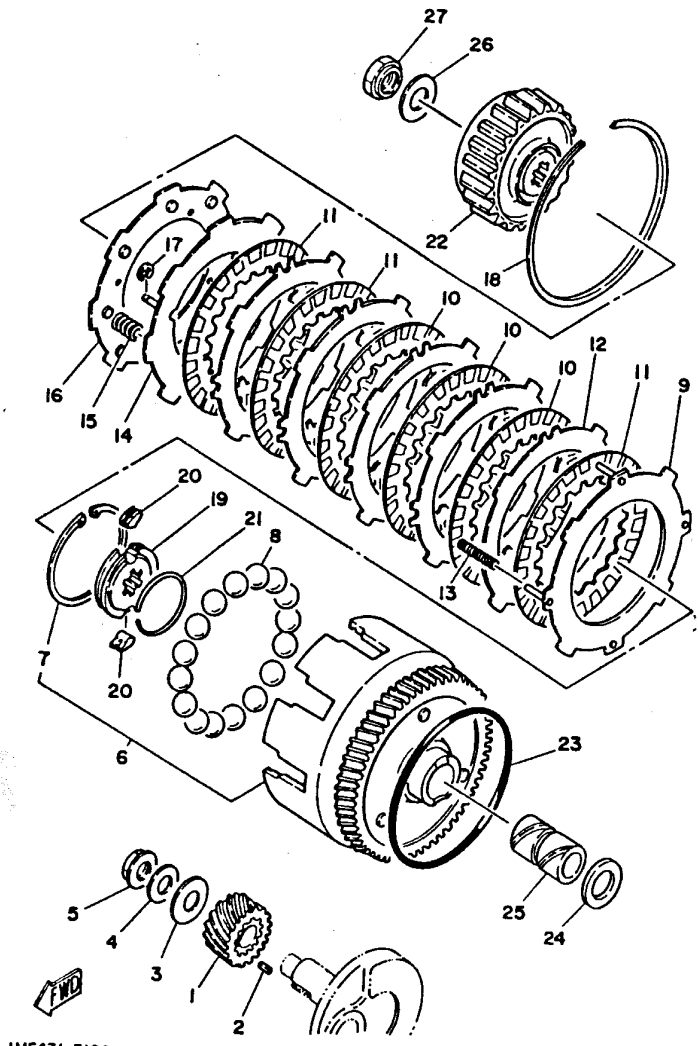
FWD
59L261-5090

FIG. 10 CLUTCH

EMBRAGUE



REF. NO.	PART NO. CODIGO NO.	DESCRIPTION DESCRIPTION	4G08	4G03	3N06	REMARKS OBSERVACION
1	56H-16110-00-30	PRIMARY DRIVE GEAR ASSY ENGRANAJE TRACCION PRIM.COMPL.	1	1	1	
2	90282-04064	KEY, STRAIGHT CHAVETA, RECTA	1	1	1	
3	90209-12280	WASHER ARANDELA DE SEPARACION	1	1	1	
4	90208-12015	WASHER, CONICAL SPRING ARANDELA DE RESORTE CONICO	1	1	1	
5	90179-12659	NUT TUERCA	1	1	1	
6	3E5-16150-02	PRIMARY DRIVEN GEAR COMP. CAMPANA DE EMBRAGUE	1	1	1	
7	90468-16090	CLIP PRESILLA	1	1	1	
8	93505-08030	BALL BOLA	16	16	16	
9	527-16520-10	PLATE, THRUST WEIGHT PLACA DE CONTRAPESO DE EMPUJE	1	1	1	
10	3E5-16521-00	PLATE, FRICTION PLACA DE FRICCION	3	3	3	
11	3E5-16521-00	PLATE, FRICTION PLACA DE FRICCION	3	3	3	
12	517-16524-10	PLATE, CLUTCH 1 (1.2T) PLACA DE EMBRAGUE 1 (1.2T)	5	5	5	UR
	517-16524-20	PLATE, CLUTCH 1 (1.4T) PLACA DE EMBRAGUE 1(1.4T)	5	5	5	UR
	517-16524-30	PLATE, CLUTCH 1 (1.6T) PLACA DE EMBRAGUE 1 (1.6T)	5	5	5	UR
13	90501-10602	SPRING, COMPRESSION RESORTE DE COMPRESION	4	4	4	PINK
14	517-16550-10	PRESSURE PLATE ASSY PLACA DE PRESION COMPL.	1	1	1	
15	90501-12088	SPRING, COMPRESSION RESORTE DE COMPRESION	8	8	8	
16	517-16561-01	PLATE, PRESSURE 2 PLACA DE PRESION 2	1	1	1	
17	99001-03600	CIRCLIP PRESILLA REDONDA	2	2	2	
18	93451-08094	CIRCLIP BOLA	1	1	1	
19	517-16180-00	ONE WAY BOSS COMP. COPA DE UNA VIA COMPLETA	1	1	1	
20	384-15635-00	PAWL, KICK SUJETADOR PEDAL DE ARRANQUE	2	2	2	
21	2T4-15837-01	SPRING, PAWL RESORTE DE SUJETADOR	1	1	1	
22	527-16571-01	BOSS, CLUTCH COPA DE EMBRAGUE	1	1	1	
23	93210-98202	O-RING ANILLO O	1	1	1	
24	122-16164-00	PLATE, THRUST 2 PLACA DE EMPUJE 2	1	1	1	
25	90560-17146	SPACER SEPARADOR	1	1	1	

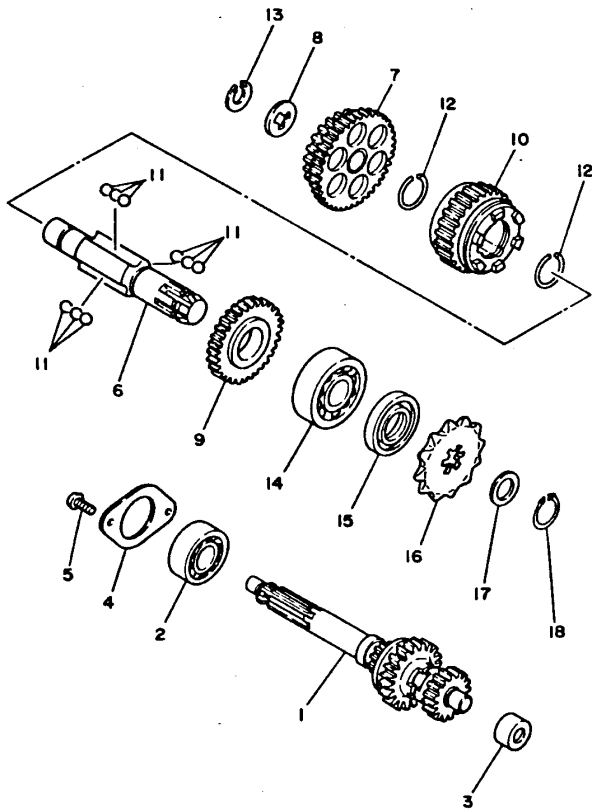


IME431-5100

FIG. 10 CLUTCH

EMBRAGUE

REF. NO.	PART NO. CODIGO NO.	DESCRIPTION DESCRIPTION	4GC6	4GC5	3NX6	REMARKS OBSERVACION
26	90208-16019	WASHER, CONICAL SPRING ARANDELA DE RESORTE CONICO	1	1	1	
27	90179-16190	NUT TUERCA	1	1	1	



40U460-4111

FIG. 11 TRANSMISSION

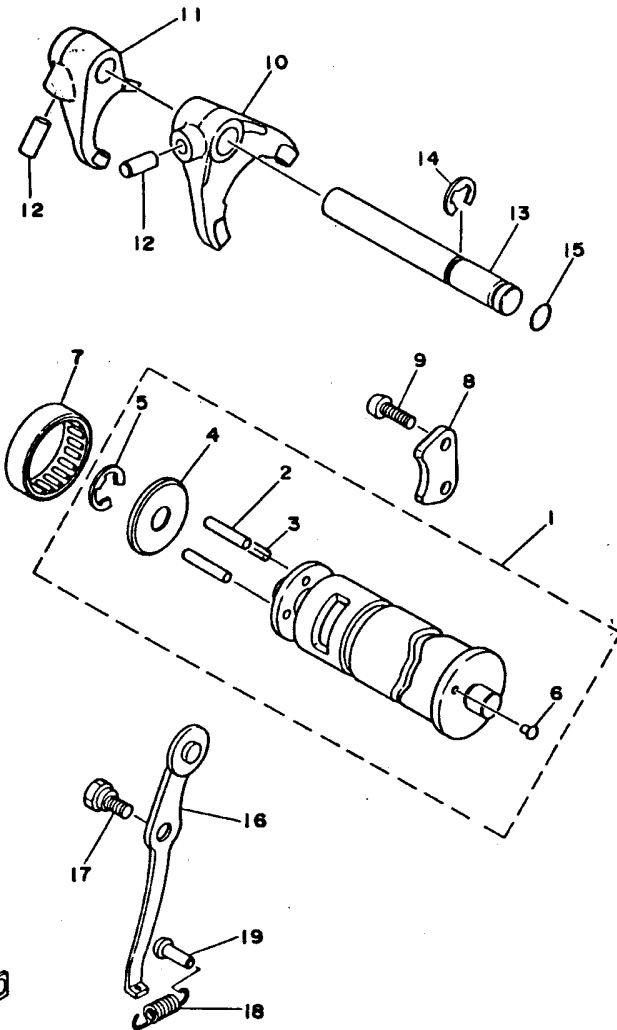
TRANSMISION

REF. NO.	PART NO. CODIGO NO.	DESCRIPTION DESCRIPTION	4GC8	4GC5	3NX6	REMARKS OBSERVACION
1	1W7-17410-00	MAIN AXLE COMP. (12/16/20T) EJE PRINCIPAL COMPLETO (12/16/	1	1	1	
2	93306-20301	BEARING COJINETE	1	1	1	
3	93320-41202	BEARING (BK1212V1) COJINETE (BK1212V1)	1	1	1	
4	296-17471-00	PLATE, COVER PLACA, DE CUBIERTA	1	1	1	
5	98507-06012	SCREW, PAN HEAD TORNILLO DE CABEZA CON PLANA	2	2	2	
6	1W7-17421-10	AXLE, DRIVE EJE SECUNDARIO	1	1	1	
7	1W7-17211-12	GEAR, 1ST WHEEL (39T/26T) ENGRANAJE RUEDA DE 1RA (39T/26	1	1	1	
8	90209-15178	WASHER (0.6T) ARANDELA DE SEPARACION (0.6T)	1	1	1	UR
	90209-15179	WASHER (0.8T) ARANDELA DESEPARACION (0.8T)	1	1	1	UR
	90209-15180	WASHER (1.0T) ARANDELA DE SEPARACION (1.0T)	1	1	1	UR
9	1W7-17221-20	GEAR, 2ND WHEEL (29T) ENGRANAJE RUEDA DE 2DA (29T)	1	1	1	
10	1W7-17231-30	GEAR, 3RD WHEEL (24T) ENGRANAJE RUEDA DE 3RA(24T)	1	1	1	
11	93509-32012	BALL BOLA	9	9	9	
12	93450-28049	CIRCLIP BOLA	2	2	2	
13	93440-15012	CIRCLIP BOLA	1	1	1	
14	93306-20401	BEARING (B6204) COJINETE (B6204)	1	1	1	
15	93102-20143	OIL SEAL SELLO ACEITE	1	1	1	
16	93812-13022	SPROCKET, DRIVE (13T) RUEDA DENTADA(13T)	1	1	1	
17	90201-20266	WASHER, PLATE (1.0T) ARANDELA, PLACA(1.0T)	1	1	1	UR
	90201-20685	WASHER, PLATE (0.5T) ARANDELA PLANA (0.5T)	1	1	1	UR
18	93410-20038	CIRCLIP BOLA	1	1	1	

B15

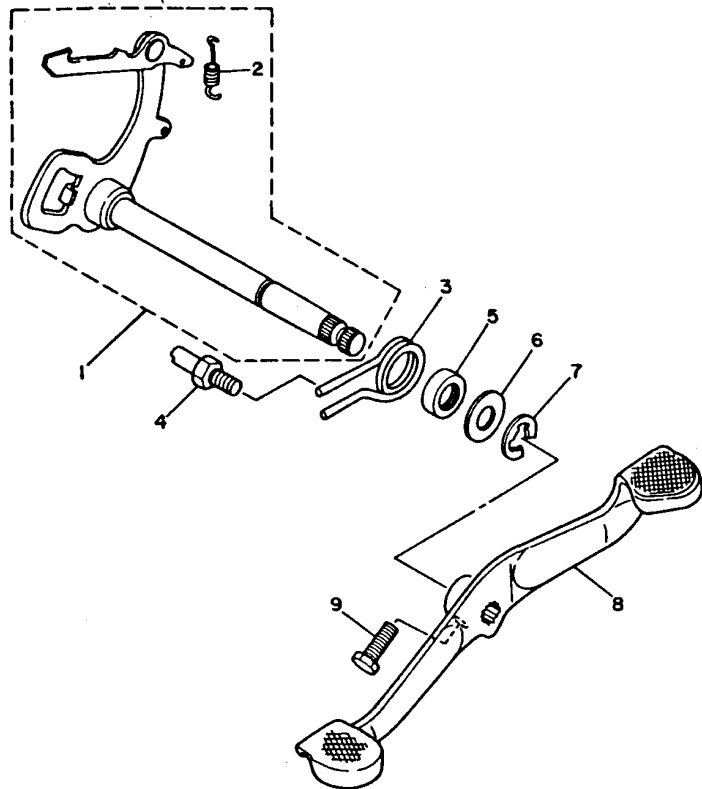
FIG. 12 SHIFT CAM. FORK

LEVA DE CAMBIO. HORQ



4GC3200-6I 20

REF. NO.	PART NO. CODIGO NO.	DESCRIPTION DESCRIPTION	4GC8	4GC5	3NX6	REMARKS OBSERVACION
1	2N8-18540-00	SHIFT CAM ASSY LEVADEL CAMBIO COMPLETA	1	1	1	
2	93604-22050	.PIN, DOWEL .PASADOR DE CLAVIJA	3	3	3	
3	91609-40016	.PIN, SPRING .PASADOR DE RESORTE	1	1	1	
4	296-18561-00	.PLATE, SIDE 1 .PLACA LATERAL 1	1	1	1	
5	99002-09600	.CIRCLIP .PRESILLA REDONDA	1	1	1	
6	136-18542-00	.POINT, NEUTRAL .PUNTO MVERTO	1	1	1	
7	93315-23208	BEARING COJINETE	1	1	1	
8	296-18562-01	PLATE, STOPPER 2 PLACA DE TOPE 2	1	1	1	
9	90150-06032	SCREW, ROUND HEAD TORNILLO CABEZA REDONDA	2	2	2	
10	1W7-18511-01	FORK, SHIFT 1 HORQUILLA DEL CAMBIO 1	1	1	1	
11	1W7-18512-02	FORK, SHIFT 2 HORQUILLA DEL CAMBIO 2	1	1	1	
12	93606-14081	PIN, DOWEL PASADOR DE CLAVIJA	2	2	2	
13	2N8-18531-00	BAR, SHIFT FORK GUIDE 1 BARRA GUIA HORQ. CAMBIO 1	1	1	1	
14	99001-10600	CIRCLIP PRESILLA REDONDA	1	1	1	
15	93210-09729	O-RING ANILLO O	1	1	1	
16	296-18140-02	STOPPER LEVER ASSY PALANCA DE TOPE COMPLETA	1	1	1	
17	90109-063F6	BOLT PERNO	1	1	1	
18	90506-10184	SPRING, TENSION RESORTE DE TENSION	1	1	1	
19	132-16346-00	HOOK, SPRING GANCHO DE RESORTE	1	1	1	



FWD
59L261-5130

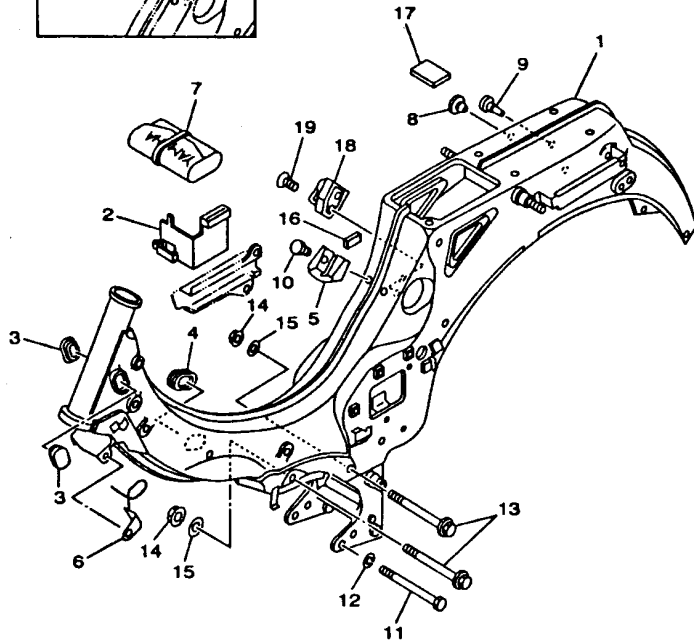
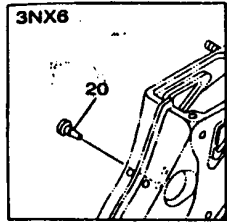
FIG. 13 SHIFT SHAFT

EJE DE CAMBIO. PEDAL

REF. NO.	PART NO. CODIGO NO.	DESCRIPTION DESCRIPTION	4GC6	4GC3	3NX6	REMARKS OBSERVACION
1	58H-18101-04	SHIFT SHAFT ASSY EJE SELECTOR COMPLETO	1	1	1	
2	90506-08122	SPRING, TENSION .RESORTE DE TENSION	1	1	1	
3	90508-320A8	SPRING, TORSION RESORTE DE TORSION	1	1	1	GREEN
4	278-18127-01	STOPPER, SCREW PASADOR DE PALANCA	1	1	1	
5	93101-12004	OIL SEAL SELLO ACEITE	1	1	1	
6	90201-12575	WASHER, PLATE ARANDELA PLANA	1	1	1	
7	99001-10600	CIRCLIP PRESILLA REDONDA	1	1	1	
8	18A-18111-00	PEDAL, SHIFT PEDAL DEL CAMBIO	1	1		
	3NX-E8111-00	PEDAL, SHIFT PEDAL DEL CAMBIO			1	
9	97027-06020	BOLT PERNO	1	1	1	

FIG. 14 FRAME

CUADRO

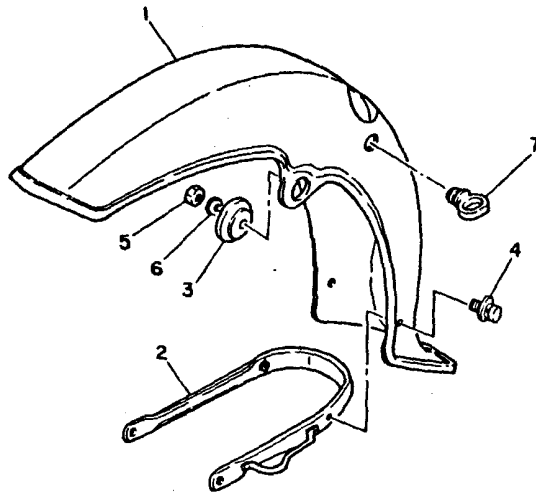
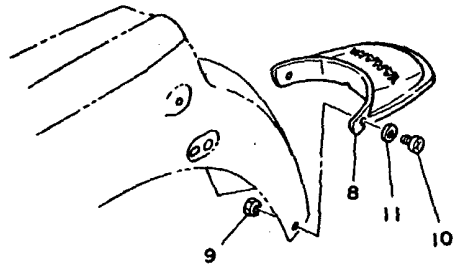


4GC5200-8140

REF. NO.	PART NO. CODIGO NO.	DESCRIPTION DESCRIPTION	4GC6	4GC5	3NX6	REMARKS OBSERVACION
1	4GC-21110-00-P3	FRAME COMP. ARMAZON COMPLETO	1	1	1	DRC2
	4GC-21110-00-H9	FRAME COMP. ARMAZON COMPLETO	1	1	1	BG
	4GC-21110-00-P4	FRAME COMP. ARMAZON COMPLETO	1	1	1	VDBM3
2	18A-21397-00	GUIDE, WIRE HARNESS GUIA ARNES DE CABLES	1	1	1	
3	4GL-21268-00	SEAL SELLO	2	2	2	
4	296-26288-01	GROMMET, CABLE ANILLO PROTECTOR DE CABLE	1	1		
	3NX-F6288-00	GROMMET, CABLE ANILLO PROTECTOR DE CABLE			1	
5	296-21345-00	BRACKET, FUEL TANK SOPORTE ACCESORIO DE DEPOSITO	1	1	1	
6	3AC-21288-00	GUIDE, CABLE GUIA DE CABLE	1	1	1	
7	4VL-28100-00	TOOL KIT JUEGO DE HERRAMIENTAS	1	1		
	3NX-F8100-00	TOOL KIT JUEGO DE HERRAMIENTAS			1	
8	90338-07043	PLUG TAPON	1	1	1	
9	90338-05056	PLUG TAPON	1	1	1	
10	97007-06010	BOLT PERNO	2	2	2	
11	90105-10701	BOLT, WASHER BASED TORNILLO CON ARANDELA	1	1	1	
12	92907-10100	WASHER, SPRING ARANDELA	1	1	1	
13	90105-08223	BOLT, WASHER BASED TORNILLO CON ARANDELA	2	2	2	
14	95707-08500	NUT, FLANGE TUERCA DE BRIDA	2	2	2	
15	90201-086P8	WASHER, PLATE ARANDELA PLANA	2	2	2	
16	18A-21778-00	DAMPER, LOCATING 1 AMORTIGUADOR DE MONTAJE	2	2	2	
17	4N0-24181-00	DAMPÉR, LOCATING 1 AMORTIGUADOR DE MONTAJE	1	1	1	
18	3E1-21308-00	HELMET HANGER ASSY PORTACASCO COMPLETO	1	1		
19	90149-06154	SCREW TORNILLO DE REGLAJE	1	1		
20	90338-05056	PLUG TAPON			1	

FIG. 15 FENDER

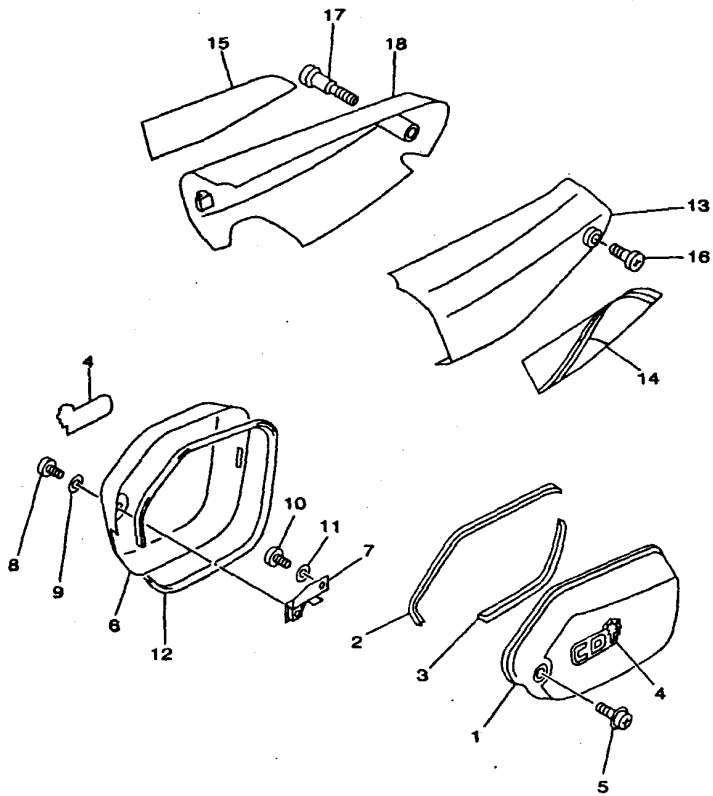
GUARDABARRO



REF. NO.	PART NO. CODIGO NO.	DESCRIPTION DESCRIPTION	4G06	4G05	3NX6	REMARKS OBSERVACION
1	296-21511-23-P4	FENDER, FRONT GUARDABARRO DELANTERO	1	1	1	DRC2
	296-21511-23-H9	FENDER, FRONT GUARDABARRO DELANTERO	1	1	1	BG
	296-21511-23-P5	FENDER, FRONT GUARDABARRO DELANTERO	1	1	1	VDBM3
2	1LG-21513-00	STAY, FENDER 1 SOPORTE DE GUARDABARRO	1	1	1	
3	90209-08018	WASHER ARANDELA DE SEPARACION	2	2	2	
4	90159-05028	SCREW, WITH WASHER TORNILLO CON VALONA	2	2	2	
5	95307-08700	NUT TUERCA	2	2	2	
6	92907-08400	WASHER ARANDELA	2	2	2	
7	1A8-21518-00	HOLDER, CABLE SOPORTE DE CABLE	1	1	1	
8	116-21621-00	FLAP CHARNELA	1	1	1	
9	95307-06600	NUT TUERCA	2	2	2	
10	98507-06018	SCREW, PAN HEAD TORNILLO DE CABEZA CON PLANA	2	2	2	
11	92907-06600	WASHER, PLATE ARANDELA	2	2	2	



IHA440-5150

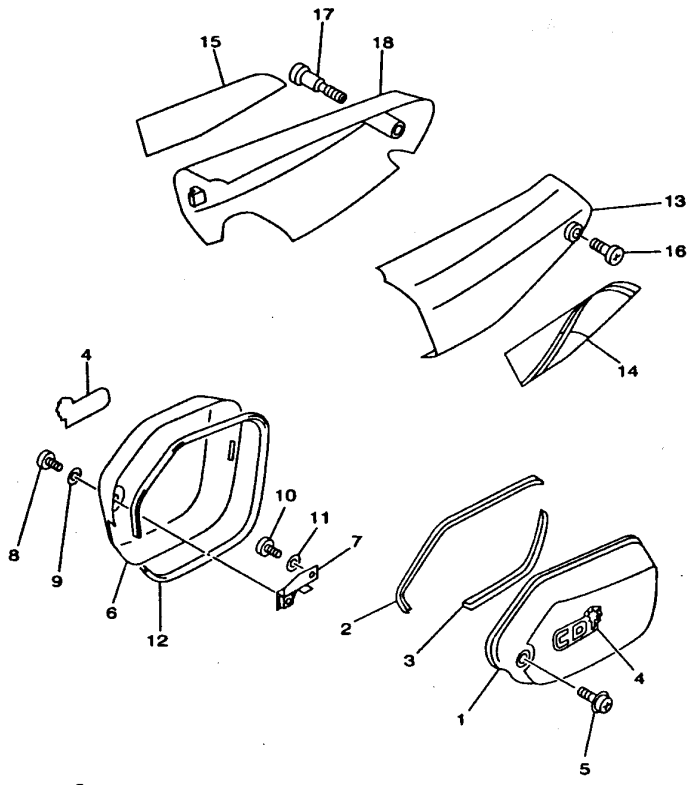


4GC5200-8160

FIG. 16 SIDE COVER CUBIERTA LATERAL

REF. NO.	PART NO. CODIGO NO.	DESCRIPTION DESCRIPTION	4GC6	4GC5	3NX6	REMARKS OBSERVACION
1	297-21711-01-P4	COVER, SIDE 1 TAPA LATERAL 1	1	1	1	DRC2
	297-21711-01-H9	COVER, SIDE 1 TAPA LATERAL 1	1	1	1	BG
	297-21711-01-P5	COVER, SIDE 1 TAPA LATERAL 1	1	1	1	VDBM3
2	3KX-2171L-00	MOLE, SIDE COVER 1 MUELLE, CUBIERTA LATERAL 1	1	1	1	
3	3KX-2171M-00	MOLE, SIDE COVER 2 MUELLE, CUBIERTA LATERAL 2	1	1	1	
4	4GC-21781-70	EMBLEM 1 EMBLEMA 1	2	2	2	
5	90159-06093	SCREW, WITH WASHER TORNILLO CON VALONA	1			
	90159-06013	SCREW, WITH WASHER TORNILLO CON VALONA		1	1	
6	3AC-21721-00-P4	COVER, SIDE 2 TAPA LATERAL 2	1	1	1	DRC2
	3AC-21721-00-H9	COVER, SIDE 2 TAPA LATERAL 2	1	1	1	BG
	3AC-21721-00-P5	COVER, SIDE 2 TAPA LATERAL 2	1	1	1	VDBM3
7	3AC-21322-00	STAY, SIDE COVER 2 SOPORTE DE TAPA LATERAL 2	1	1	1	
8	97007-06012	BOLT PERNO	1	1	1	
9	92907-06600	WASHER, PLATE ARANDELA	1	1	1	
10	98507-06012	SCREW, PAN HEAD TORNILLO DE CABEZA CON PLANA	1	1	1	
11	92907-06600	WASHER, PLATE ARANDELA	1	1	1	
12	4GL-2171M-00	MOLE, SIDE COVER 2 MUELLE, CUBIERTA LATERAL 2	1	1	1	
13	18A-21731-00-P5	COVER, SIDE 3 TAPA LATERAL 3	1	1	1	DRC2
	18A-21731-00-H9	COVER, SIDE 3 TAPA LATERAL 3	1	1	1	BG
	18A-21731-00-P6	COVER, SIDE 3 TAPA LATERAL 3	1	1	1	VDBM3
14	4GC-2173E-30	GRAPHIC 1 GRAFICO	1	1	1	UR FOR DRC2 UR PARA DRC2
	4GC-2173E-40	GRAPHIC 1 GRAFICO	1	1	1	UR FOR BG UR PARA BG
	4GC-2173E-50	GRAPHIC 1 GRAFICO	1	1	1	UR FOR VDBM3 UR PARA VDBM3
15	4GC-2173F-30	GRAPHIC 2 GRAFICO	1	1	1	UR FOR DRC2 UR PARA DRC2
	4GC-2173F-40	GRAPHIC 2 GRAFICO	1	1	1	UR FOR BG UR PARA BG
	4GC-2173F-50	GRAPHIC 2 GRAFICO	1	1	1	UR FOR VDBM3 UR PARA VDBM3
16	18A-21712-00	BOLT, SIDE COVER PERNO DE CUBIERTA LATERAL	1	1	1	

C6




4GC5200-8160

FIG. 16 SIDE COVER

CUBIERTA LATERAL

REF. NO.	PART NO. CODIGO NO.	DESCRIPTION DESCRIPTION	4GC6	4GC5	3NX6	REMARKS OBSERVACION
17	18A-21722-00	BOLT 2 PERNO 2	1	1	1	
18	18A-21741-00-P5	COVER, SIDE 4 CUBIERTA LATERAL 4	1	1	1	DRC2
	18A-21741-00-H9	COVER, SIDE 4 CUBIERTA LATERAL 4	1	1	1	BG
	18A-21741-00-P6	COVER, SIDE 4 CUBIERTA LATERAL 4	1	1	1	VDBM3

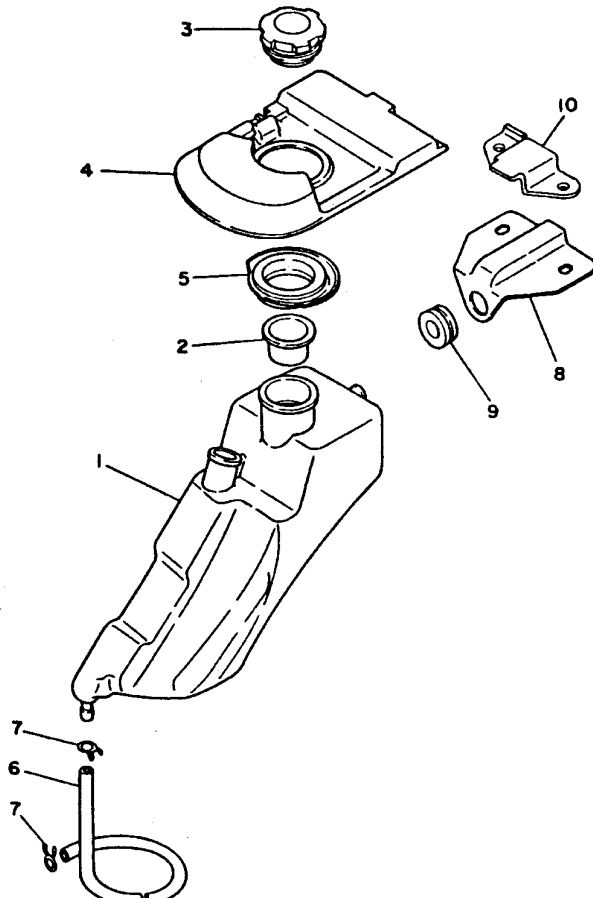
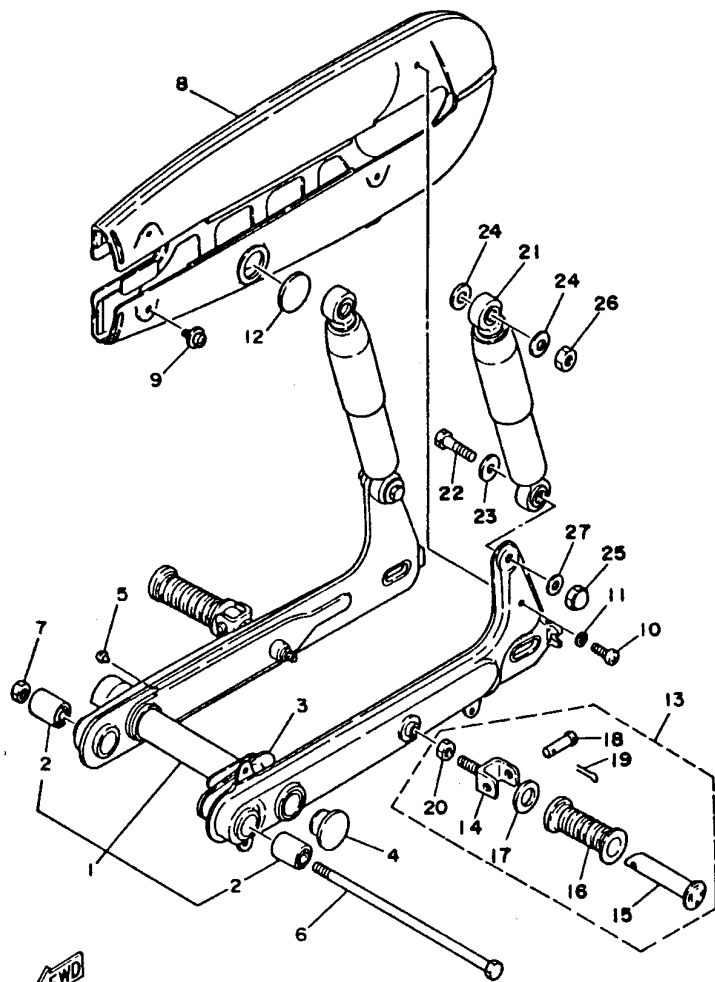


FIG. 17 OIL TANK

DEPOSITO DE ACEITE

REF. NO.	PART NO. CODIGO NO.	DESCRIPTION DESCRIPTION	4GC6	4GC5	3NX6	REMARKS OBSERVACION
1	18A-21751-01	TANK, OIL	1	1		
	3NX-F1751-00	DEPOSITO DE ACEITE			1	
2	18A-21752-00	TANK, OIL	1	1	1	
		DEPOSITO DE ACEITE				
		TUBE, FILLER 1				
3	18A-21770-01	TUBO DE LLENADOR 1	1	1	1	
		OIL TANK CAP ASSY				
		TAPA DE DEPOSITO DE ACEITE				
4	18A-2172W-01	COVER	1	1		
		CUBIERTA				
	3NX-F172W-00	COVER			1	
		CUBIERTA				
5	18A-21773-01	GROMMET	1	1		
		ANILLO PROTECTOR				
	3NX-F1773-00	GROMMET			1	
		ANILLO PROTECTOR				
6	164-24319-00	PIPE, OIL	1	1	1	
		TUBO DE ACEITE				
7	90467-08003	CLIP	2	2	2	
		PRESILLA				
8	18A-2172K-00	BRACKET 1	1	1		
		SOSTEN				
	3NX-F172K-00	BRACKET 1			1	
		SOSTEN				
9	90480-22196	GROMMET	1	1	1	
		TAPON				
10	4GC-2172L-00	BRACKET 2	1			
		SOSTEN				

 4GD1259-3170

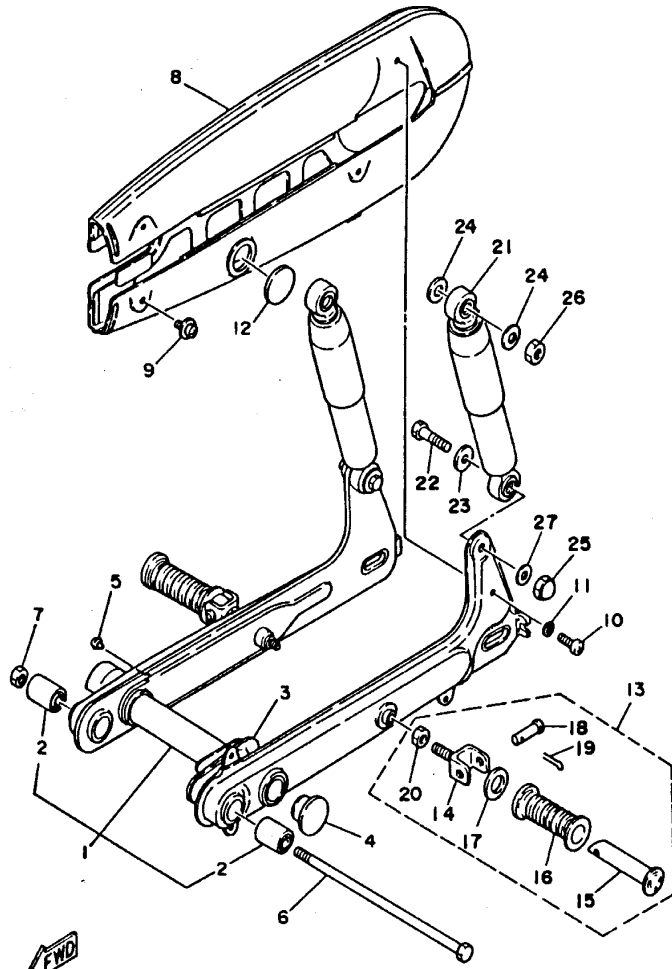


4GC3200-6180

FIG. 18 REAR ARM. SUSPENSION BRAZO TRASERO. SUSPENSION

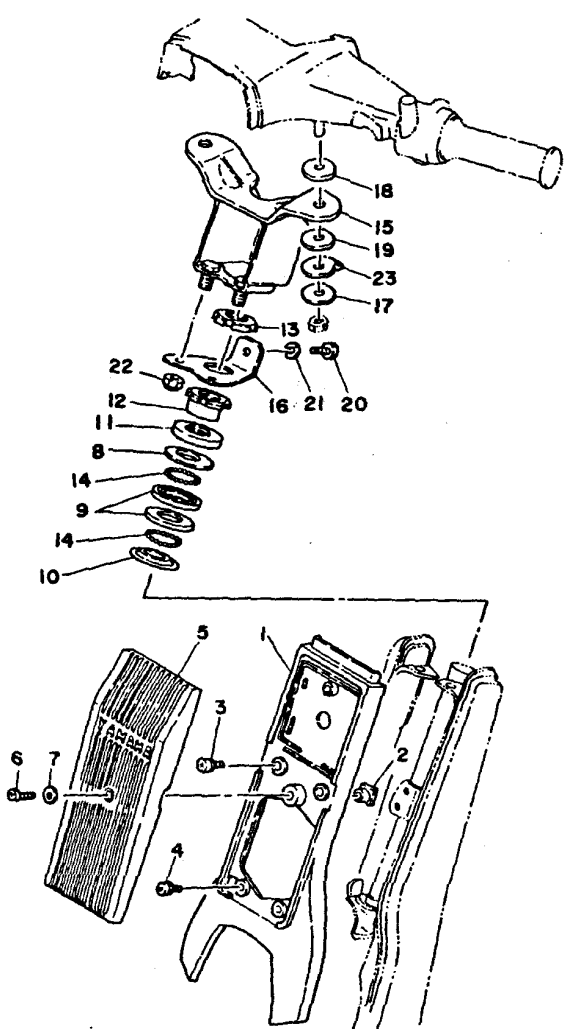
REF. NO.	PART NO. CODIGO NO.	DESCRIPTION DESCRIPTION	4GC6	4GC5	3NX6	REMARKS OBSERVACION
1	4GC-W2211-00-P3	REAR ARM COMP. BRAZO TRASERO COMPLETO	1	1	1	DRC2
	4GC-W2211-00-H9	REAR ARM COMP. BRAZO TRASERO COMPLETO	1	1	1	BG
	4GC-W2211-00-P4	REAR ARM COMP. BRAZO TRASERO COMPLETO	1	1	1	VDBM3
2	102-22123-00	.BUSH 1 .BUJE 1	2	2	2	
3	4GL-22151-00	SEAL, GUARD SELLO DE GUARDA	1	1	1	
4	180-22117-00	CAP TAPA	2	2		
	3NX-F2117-00	CAP TAPA			2	
5	90338-07043	PLUG TAPON	1	1	1	
6	109-22141-01	SHAFT, PIVOT EJE DEL BARCULANTE	1	1	1	
7	90185-10091	NUT, SELF-LOCKING TUERCA AUTOBLOCANTE	1	1	1	
8	296-22310-02-P5	CHAIN CASE ASSY CAJA DE CADENA COMPLETA	1	1	1	DRC2
	296-22310-02-H9	CHAIN CASE ASSY CAJA DE CADENA COMPLETA	1	1	1	BG
	296-22310-02-P6	CHAIN CASE ASSY CAJA DE CADENA COMPLETA	1	1	1	VDBM3
9	90159-05131	SCREW, WITH WASHER TORNILLO CON VALONA	3	3	3	
10	98507-05014	SCREW, PAN HEAD TORNILLO DE CABEZA CON PLANA	1	1	1	
11	82907-05600	WASHER, PLATE ARANDELA	1	1	1	
12	148-22315-00	CAP TAPA	1	1		
	3NX-F2315-00	CAP TAPA			1	
13	120-27430-02	REAR FOOTREST ASSY 1 APOYAPIE POSTERIOR COMPLETO 1	2	2		
	59L-F7430-00	REAR FOOTREST ASSY 1 APOYAPIE POSTERIOR COMPLETO 1			2	
14	120-27432-02	.BRACKET 1 .SOPORTE 1	1	1		
	23A-F7432-00	.BRACKET 1 .SOPORTE 1			1	
15	120-27431-00	.FOOTREST, REAR 1 .APOYAPIE POSTERIOR 1	1	1	1	
16	120-27433-00	.COVER, REAR FOOTREST .CUBIERTA APOYAPIE TRASERO	1	1		
	59L-F7433-00	.COVER, REAR FOOTREST .CUBIERTA APOYAPIE TRASERO			1	
17	90201-20279	.WASHER, PLATE .ARANDELA PLANA	1	1	1	
18	90240-06052	.PIN, CLEVIS .PASADOR CON HOYO	1	1	1	

FIG. 18 REAR ARM. SUSPENSION BRAZO TRASERO. SUSPENSION



4GC3200-6180

REF. NO.	PART NO. CODIGO NO.	DESCRIPTION DESCRIPTION	4GC6	4GC5	3NX6	REMARKS OBSERVACION
19	91401-16015	.PIN, COTTER .PASADOR DE CHAVETA	1	1	1	
20	95307-12700	.NUT .TUERCA	1	1	1	
21	3NX-22210-00	SHOCK ABSORBER ASSY, REAR AMORTIGUADOR TRASERO COMPLETO	2	2	2	
22	90101-10776	BOLT TORNILLO	2	2	2	
23	90201-10140	WASHER, PLATE ARANDELA PLANA	2	2	2	
24	90201-126A7	WASHER, PLATE ARANDELA PLANA	4	4	4	
25	90176-10073	NUT, CROWN TUERCA CORONA	2	2	2	
26	95307-12700	NUT TUERCA	2	2	2	
27	92907-10600	WASHER, PLATE ARANDELA	2	2	2	



3FT656-8190

FIG. 19 STEERING

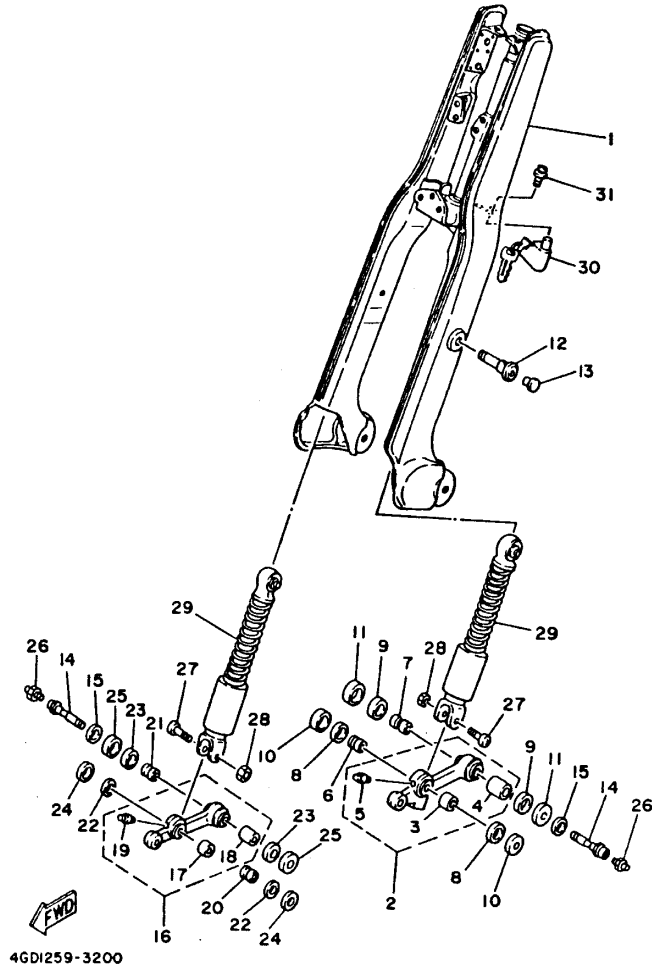
DIRECCION

REF. NO.	PART NO. CODIGO NO.	DESCRIPTION DESCRIPTION	DIRECCION			REMARKS OBSERVACION
			4GC8	4GC5	3NX6	
1	18A-23391-00-P6	PANEL, FRONT PANEL DELANTERO	1	1	1	DRC2
	18A-23391-00-H9	PANEL, FRONT PANEL DELANTERO	1	1	1	BG
	18A-23391-00-P7	PANEL, FRONT PANEL DELANTERO	1	1	1	VDBM3
2	90173-06004	NUT, SQUARE TUERCA CUADRADA	1	1	1	
3	90159-06016	SCREW, WITH WASHER TORNILLO CON VALONA	2	2	2	
4	90153-06063	SCREW, HEXAGON TORNILLO HEXAGONAL	2	2	2	
5	1AJ-23397-10	PANEL, FRONT 2 PANEL DELANTERO 2	1	1	1	
6	98507-06020	SCREW, PAN HEAD TORNILLO DE CABEZA CON PLANA	1	1	1	
7	92907-06600	WASHER, PLATE ARANDELA	1	1	1	
8	22F-23411-01	RACE, BALL 1 PISTA DE BOLAS 1	1	1	1	
9	22F-23412-01	RACE, BALL 2 PISTA DE BOLAS 2	2	2	2	
10	22F-23414-01	RACE, BALL 4 BASE DE BOLA 4	1	1	1	
11	122-23416-00	COVER, BALL RACE 2 CUBIERTA DE BASE DE BOLA 2	1	1	1	
12	90179-25050	NUT TUERCA	1	1	1	
13	90179-25033	NUT TUERCA	1	1	1	
14	93503-16003	BALL BOLA	44	44	44	
15	3E1-23461-00	BRACKET, HANDLE SOPORTE DE MANUBRIO	1	1	1	
16	296-23463-01	PLATE, HANDLE PLACA DE MANUBRIO	1	1	1	
17	90201-08310	WASHER, PLATE ARANDELA PLANA	2	2	2	
18	296-23445-00	DAMPER AMORTIGUADOR	2	2		
	3NX-F3445-00	DAMPER AMORTIGUADOR			2	
19	296-23455-00	DAMPER AMORTIGUADOR	2	2		
	3NX-F3455-00	DAMPER AMORTIGUADOR			2	
20	97007-08016	BOLT PERNO	1	1	1	
21	92907-08600	WASHER, PLATE ARANDELA	1	1	1	
22	95607-08200	NUT, SELF-LOCKING TUERCA DE AUTO-CIERRE	2	2	2	
23	90215-11012	WASHER, LOCK ARANDELA DE CIERRE	2	2	2	

C11

FIG. 20 FRONT FORK

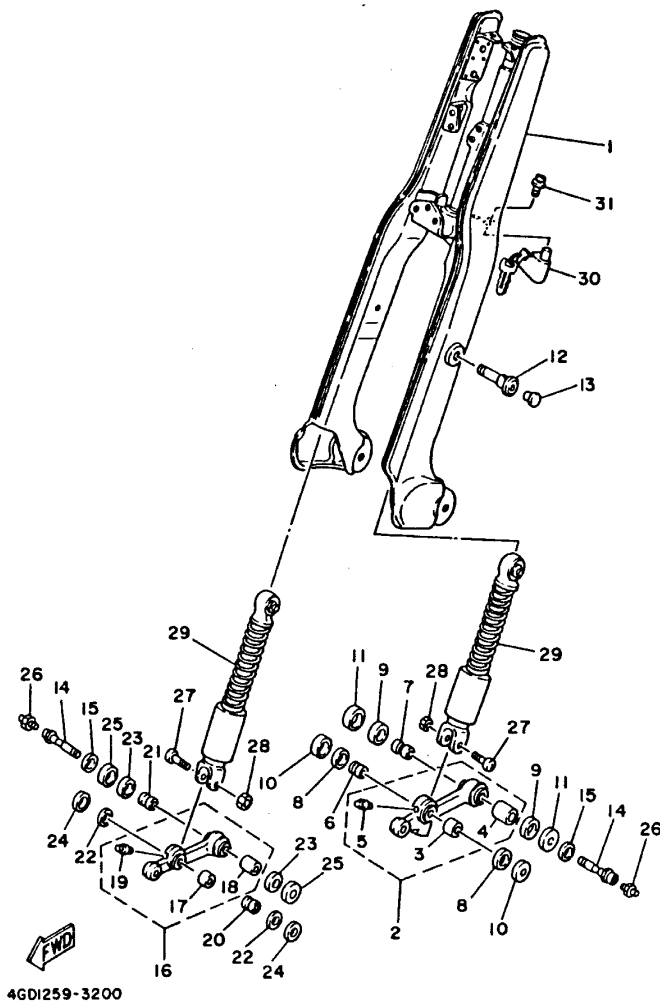
HORQUILLA DELANTERA



REF. NO.	PART NO. CODIGO NO.	DESCRIPTION DESCRIPTION	4G6	4G5	3N6	REMARKS OBSERVACION
1	517-23310-03-P3	FORK COVER COMP. CUBIERTA DE HORQUILLA COMPLETA	1	1	1	DRC2
	517-23310-03-H9	FORK COVER COMP. CUBIERTA DE HORQUILLA COMPLETA	1	1	1	BG
	517-23310-03-P4	FORK COVER COMP. CUBIERTA DE HORQUILLA COMPLETA	1	1	1	VDBM3
2	296-23361-02	ARM 1 BRAZO 1	1	1	1	
3	296-23362-09	.BUSH 1 .BUJE 1	1	1	1	
4	296-23372-09	.BUSH 2 .BUJE 2	1	1	1	
5	93700-04002	.NIPPLE, GREASE .NIPLE DE ENGRASAR	1	1	1	
6	296-23363-01	COLLAR 1 COLLAR 1	1	1	1	
7	296-23364-02	COLLAR 2 COLLAR 4	1	1	1	
8	296-23381-01	SEAL, DUST 1 SELLO DE POLVO 1	2	2	2	
9	296-23382-01	SEAL, DUST 2 SELLO DE POLVO 2	2	2	2	
10	116-23383-00	COVER, DUST SEAL 1 CUBIERTA DE SELLO DE POLVO 1	2	2	2	
11	3AC-23384-00	COVER, DUST SEAL 2 CUBIERTA DE SELLO DE POLVO 2	2	2	2	
12	90109-08692	BOLT PERNO	2	2	2	
13	90338-06143	PLUG TAPON	2	2	2	
14	90401-10035	BOLT, UNION PERNO DE UNION	2	2	2	
15	92907-10600	WASHER, PLATE ARANDELA	2	2	2	
16	296-23371-02	ARM 2 BRAZO 2	1	1	1	
17	296-23362-09	.BUSH 1 .BUJE 1	1	1	1	
18	296-23372-09	.BUSH 2 .BUJE 2	1	1	1	
19	93700-04002	.NIPPLE, GREASE .NIPLE DE ENGRASAR	1	1	1	
20	296-23363-01	COLLAR 1 COLLAR 1	1	1	1	
21	296-23364-02	COLLAR 2 COLLAR 4	1	1	1	
22	296-23381-01	SEAL, DUST 1 SELLO DE POLVO 1	2	2	2	
23	296-23382-01	SEAL, DUST 2 SELLO DE POLVO 2	2	2	2	
24	116-23383-00	COVER, DUST SEAL 1 CUBIERTA DE SELLO DE POLVO 1	2	2	2	
25	3AC-23384-00	COVER, DUST SEAL 2 CUBIERTA DE SELLO DE POLVO 2	2	2	2	

FIG. 20 FRONT FORK

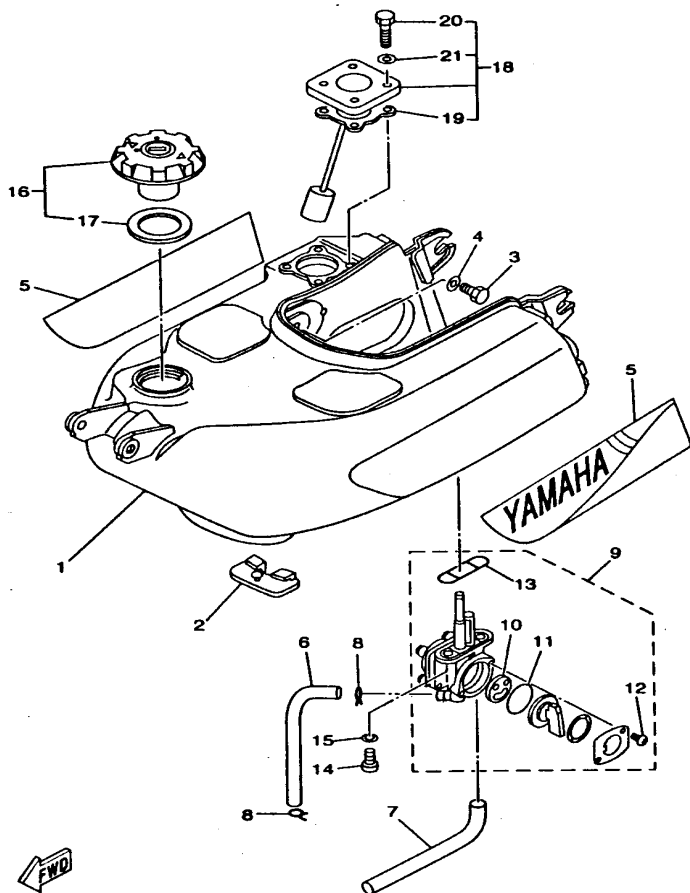
HORQUILLA DELANTERA



REF. NO.	PART NO. CODIGO NO.	DESCRIPTION DESCRIPTION	4GC6	4GC5	3NX6	REMARKS OBSERVACION
26	93700-06004	NIPPLE, GREASE NIPLE DE ENGRASAR	2	2	2	
27	90155-08002	SCREW, FLAT FILLISTER TORNILLO CABEZA PLANA RAN.	2	2	2	
28	95307-08700	NUT TUERCA	2	2	2	
29	296-23350-02	SHOCK ABSORBER ASSY AMORTIGUADOR COMPLETO	2	2	2	
30	3E1-23408-00	STEERING LOCK ASSY CERRADURA DE DIRECCION COMPL.	1	1	1	
31	90152-05008	SCREW, COUNTERSUNK TORNILLO EMBUTIDO	2	2	2	

FIG. 21 FUEL TANK

DEPOSITO DE COMBUSTIBLE

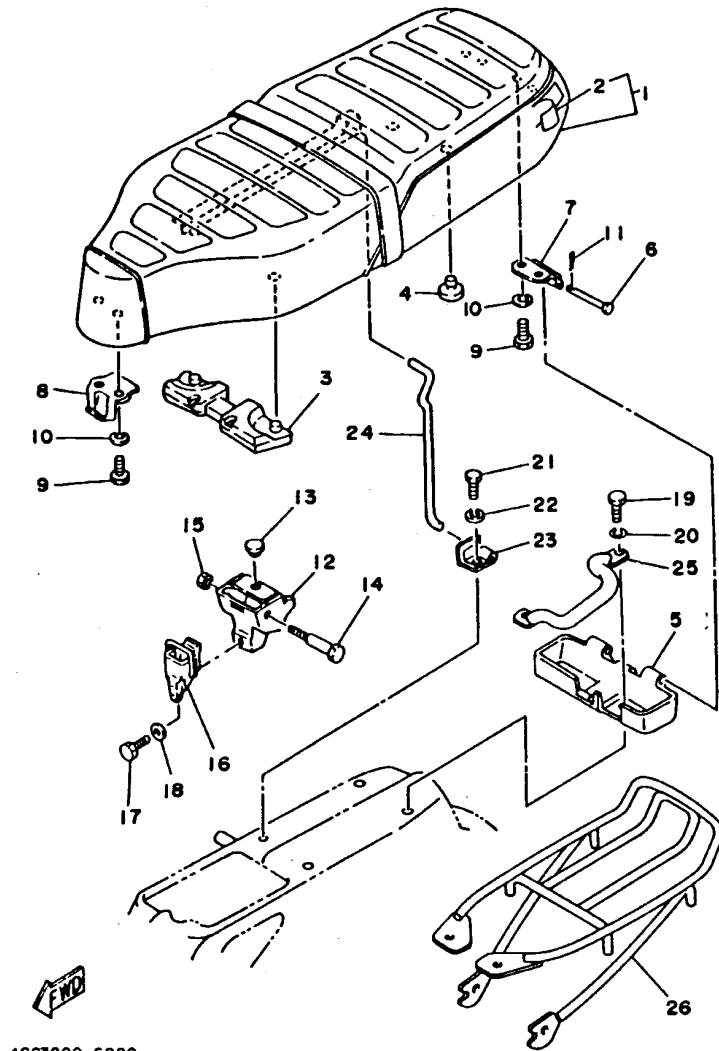


4GC5200-8210

REF. NO.	PART NO. CODIGO NO.	DESCRIPTION DESCRIPTION	4GC6	4GC5	3NX6	REMARKS OBSERVACION
1	18A-24110-01-P6	FUEL TANK COMP. DEPOSITO DE COMBUSTIBLE COMP.	1	1	1	DRC2
	18A-24110-01-H9	FUEL TANK COMP. DEPOSITO DE COMBUSTIBLE COMP.	1	1	1	BG
	18A-24110-01-P7	FUEL TANK COMP. DEPOSITO DE COMBUSTIBLE COMP.	1	1	1	VDBM3
2	296-24181-00	DAMPER, LOCATING 1 AMORTIGUADOR DE MONTAJE	1	1		
	3NX-F4181-00	DAMPER, LOCATING 1 AMORTIGUADOR DE MONTAJE			1	
3	97007-08016	BOLT PERNO	2	2	2	
4	92907-08600	WASHER, PLATE ARANDELA	2	2	2	
5	4GC-24240-30	GRAPHIC SET JUEGO DE CALCOMANIAS	1	1	1	UR FOR DRC2 UR PARA DRC2
	4GC-24240-40	GRAPHIC SET JUEGO DE CALCOMANIAS	1	1	1	UR FOR BG UR PARA BG
	4GC-24240-50	GRAPHIC SET JUEGO DE CALCOMANIAS	1	1	1	UR FOR VDBM3 UR PARA VDBM3
6	90445-091K4	HOSE TUBO	1	1	1	
7	18A-24317-00	PIPE 7 TUBO 7	1	1	1	
8	90467-08003	CLIP PRESILLA	2	2	2	
9	3AÇ-24500-00	FUEL COCK ASSY 1 GRIFO DE COMBUSTIBLE 1	1	1	1	
10	3AJ-24523-00	VALVE PACKING VALVULA	1	1	1	
11	3AJ-24534-00	SEAL, COCK SELLO DE GRIFO	1	1	1	
12	98503-03008	SCREW, PAN HEAD TORNILLO DE CABEZA CON PLANA	2	2	2	
13	4X8-24512-00	O-RING EMPAQUE	1	1	1	
14	90149-06011	SCREW TORNILLO DE REGLAJE	2	2	2	
15	90202-05193	WASHER, PLATE ARANDELA DE PLANA	2	2	2	
16	2MM-24602-02	CAP ASSY TAPON COMPLETO	1	1	1	
17	2MM-24612-00	GASKET, CAP EMPAQUE DE TAPA	1	1	1	
18	15K-24260-03	FUEL METER ASSY MEDIDOR DE COMBUSTIBLE COMPL.	1	1	1	
19	3L5-24268-00	GASKET, FUEL METER EMPAQ MEDIDOR DE COMBUSTIBLE	1	1	1	
20	97301-05016	BOLT PERNO	4	4	4	
21	90201-05029	WASHER, PLATE ARANDELA PLANA	4	4	4	

FIG. 22 SEAT

ASIENTO

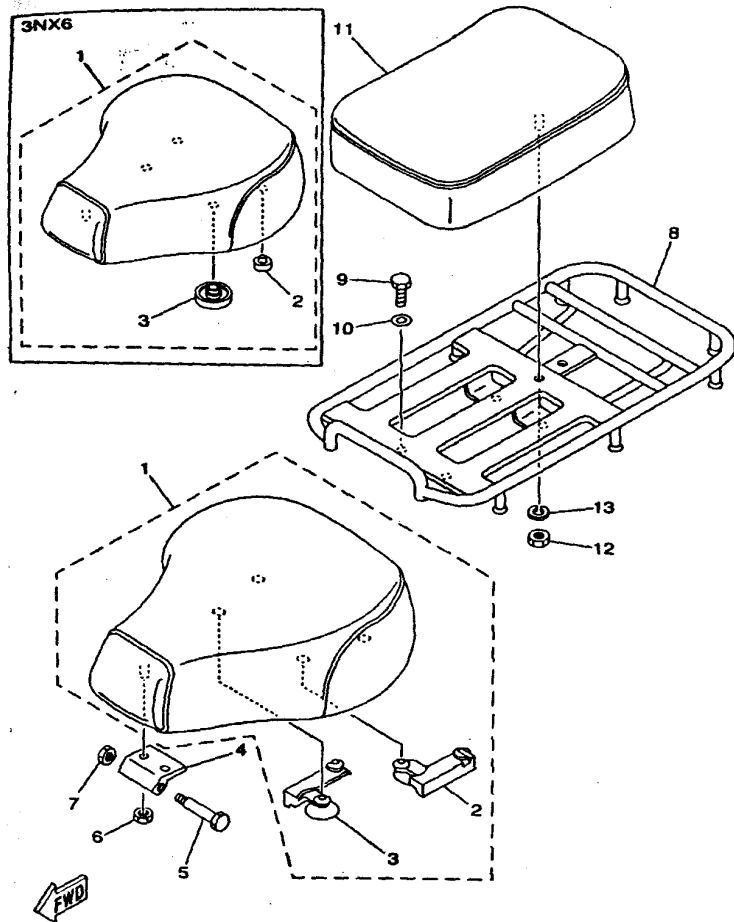


4GC3200-6220

REF. NO.	PART NO. CODIGO NO.	DESCRIPTION DESCRIPTION	4GC8	4GC5	3NX6	REMARKS OBSERVACION
1	19M-W2472-00	DOUBLE SEAT ASSY ASIENTO DOBLE COMPLETO	1			
2	19M-24731-00	COVER, SEAT .FUNDA DE SILLIN	1			
3	23N-24741-00	PAD, SEAT COJIN DE ASIENTO	1			
4	102-27114-A0	STOPPER, MAIN STAND TOPE DE PUNTAL PRINCIPAL	2			
5	298-24738-A0	BRACKET, SEAT SOPORTE DE ASIENTO	1			
6	91701-05055	PIN, CLEVIS PASADOR DE ABRAZADERA	2			
7	214-24726-A0	HINGE, SEAT HINGE SEAT	2			
8	298-24728-A0	BRACKET, SEAT SOPORTE DE ASIENTO	1			
9	97301-06016	BOLT PERNO	6			
10	92901-06100	WASHER, SPRING ARANDELA	6			
11	90468-10050	CLIP PRESILLA	2			
12	1W7-24718-01	BRACKET, SEAT SOPORTE DE ASIENTO	1			
13	128-27114-00	STOPPER, MAIN STAND TOPE DE PUNTAL PRINCIPAL	1			
14	90109-06024	BOLT PERNO	1			
15	95307-06800	NUT TUERCA	1			
16	214-24708-00	SEAT LEVER ASSY PALANCA ASIENTO COMPL.	1			
17	97007-06012	BOLT PERNO	1			
18	92907-06600	WASHER, PLATE ARANDELA	1			
19	97007-08020	BOLT PERNO	2			
20	92907-08600	WASHER, PLATE ARANDELA	2			
21	97007-08020	BOLT PERNO	2			
22	92907-08600	WASHER, PLATE ARANDELA	2			
23	298-24748-00	BRACKET, SEAT SOPORTE DE ASIENTO	1			
24	4GC-2478G-00	STOPPER TOPE	1			
25	527-21165-01	HANDLE, STANDING MANIJA FIJA	1			
26	296-24830-00	SUB CARRIER ASSY SUBPORTADOR COMPLETO	1			

FIG. 23 SEAT 2

ASIENTO 2



4GC5200-8230

REF. NO.	PART NO. CODIGO NO.	DESCRIPTION DESCRIPTION	4GC6	4GC5	3NX6	REMARKS OBSERVACION
1	3AC-24710-00	SINGLE SEAT ASSY ASIENTO SIMPLE COMPLETO		1		
	1JM-F4710-00	SINGLE SEAT ASSY ASIENTO SIMPLE COMPLETO			1	
2	1AJ-24723-00	.DAMPER, SEAT .AMORTIGUADOR DE ASIENTO		1		
	3NX-F4723-00	.DAMPER, SEAT .AMORTIGUADOR DE ASIENTO			2	
3	1AJ-24724-00	.DAMPER, SEAT .AMORTIGUADOR DE ASIENTO		1		
	3NX-F4741-00	.PAD, SEAT .COJIN DE ASIENTO			2	
4	296-24726-00	HINGE, SEAT HINGE SEAT		1	1	
5	90109-06024	BOLT PERNO		1	1	
6	95307-06600	NUT TUERCA		2	2	
7	95607-06200	NUT, SELF U-FLANGE TUERCA DE AUTO-CIERRE		1		
	95307-06600	NUT TUERCA			1	
8	1AJ-24810-00	CARRIER ASSY PORTADOR COMPLETO		1		
	1JM-F4810-00	CARRIER ASSY PORTADOR COMPLETO			1	
9	97007-08016	BOLT PERNO		4	4	
10	92907-08600	WASHER, PLATE ARANDELA		4	4	
11	298-24750-00	TANDEM SEAT ASSY ASIENTO TANDEM COMPLETO		1		
	1JM-F4750-00	TANDEM SEAT ASSY ASIENTO TANDEM COMPLETO			1	
12	95307-08600	NUT TUERCA		1	1	
13	92907-06100	WASHER, SPRING ARANDELA		1	1	

D2

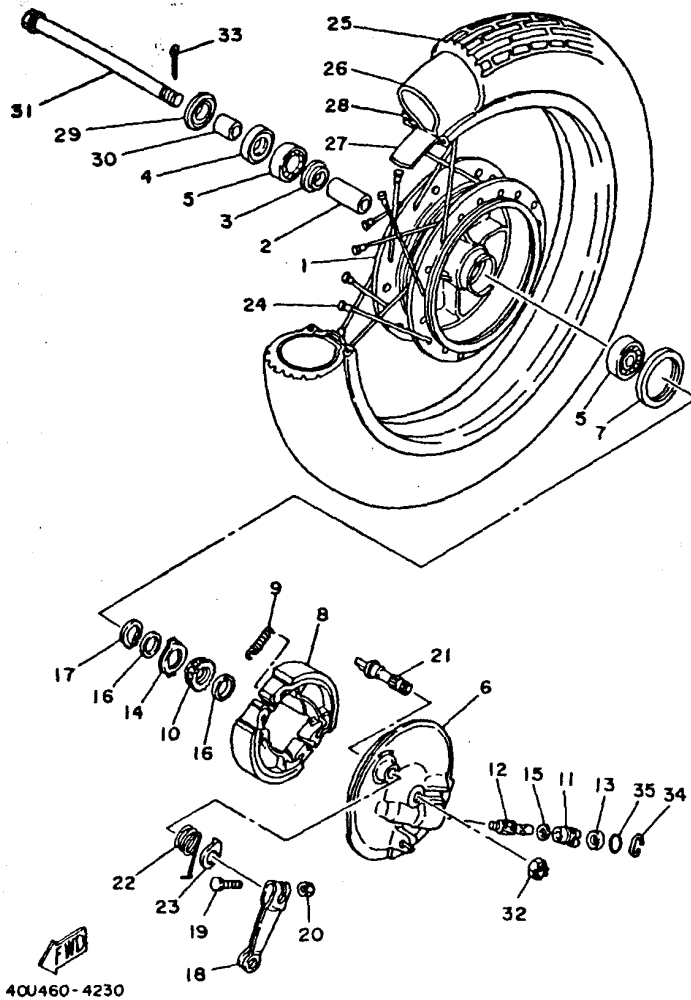


FIG. 24 FRONT WHEEL

RUEDA DELANTERA

REF. NO.	PART NO. CODIGO NO.	DESCRIPTION DESCRIPTION	4GC6	4GC5	3NX6	REMARKS OBSERVACION
1	517-25111-00-35	HUB, FRONT MASA DELANTERA	1	1	1	SL
2	90560-10292	SPACER SEPARADOR	1	1	1	
3	195-25115-00	FLANGE, SPACER 1 BRIDA DE ESPACIADOR 1	1	1	1	
4	93108-20001	OIL SEAL SELLO ACEITE	1	1	1	
5	93308-30003	BEARING (B6300Z) COJINETE (B6300Z)	2	2	2	
6	18A-25121-00-35	PLATE, BRAKE SHOE PLACA DE ZAPATA DE FRENO	1	1	1	SL
7	93105-47007	OIL SEAL SELLO ACEITE	1	1	1	
8	3AC-W2536-00	BRAKE SHOE SET JUEGO DE ZAPATA DE FRENO	1	1	1	
9	90508-15260	SPRING, TENSION RESORTE DE TENSION	2	2	2	
10	296-25135-00	GEAR, DRIVE ENGRANAJE DE TRACCION	1	1	1	
11	109-25136-00	BUSH BUJE	1	1	1	
12	296-25138-00	GEAR, METER ENGRANAJE DE MEDIDOR	1	1	1	
13	93104-07003	OIL SEAL SELLO ACEITE	1	1	1	
14	183-25149-00	CLUTCH, METER EMBRAGUE DEL CUENTAKMS	1	1	1	
15	90201-07076	WASHER, PLATE ARANDELA PLANA	1	1	1	
16	90201-20269	WASHER, PLATE ARANDELA PLANA	2	2	2	
17	99009-20400	CIRCLIP PRESILLA REDONDA	1	1	1	
18	3E1-25155-00	LEVER, CAMSHAFT 1 PALANCA DE ARBOL DE LEVAS	1	1	1	
19	90101-06278	BOLT TORNILLO	1	1	1	
20	95307-06600	NUT TUERCA	1	1	1	
21	3Y6-25351-00	CAMSHAFT ARBOL DE LEVAS	1	1	1	
22	90508-26393	SPRING, TORSION RESORTE DE TORSION	1	1	1	
23	3Y6-2533A-01	PLATE, INDICATOR PLACA INDICADOR	1	1	1	
24	109-25104-10	SPOKE SET, FRONT JUEGO DE RAYOS DELANTERO	1	1	1	
25	94122-172T1	TIRE (2.25-17) NEUMATICO (2.25-17)	1	1	1	INOUE
26	94222-17269	TUBE (2.25-17) TUBO (2.25-17)	1	1	1	UR INOUE
	94225-17309	TUBE (2.50-17) TUBO (2.50-17)	1	1	1	UR INOUE

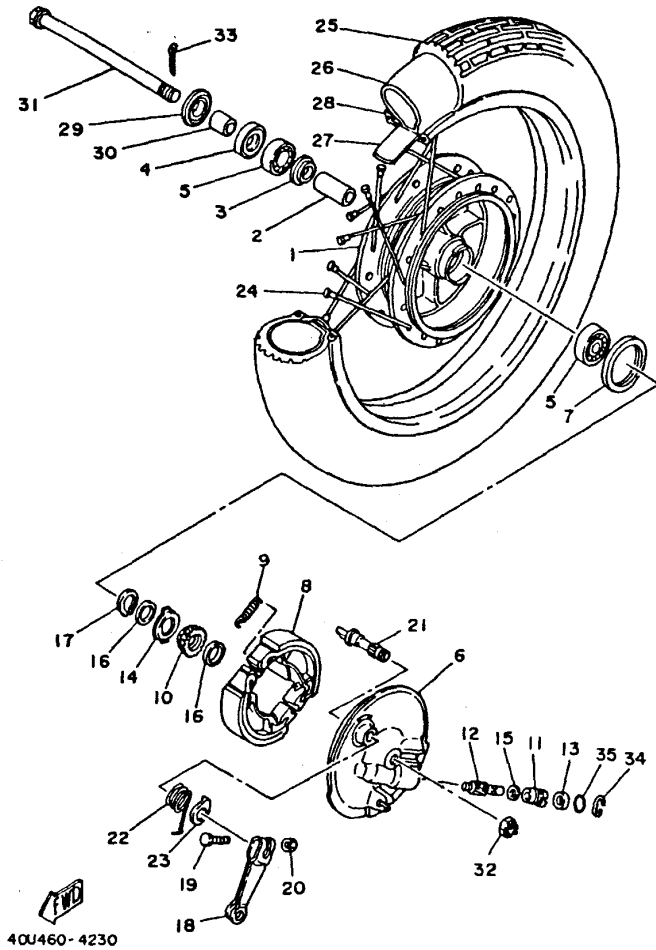
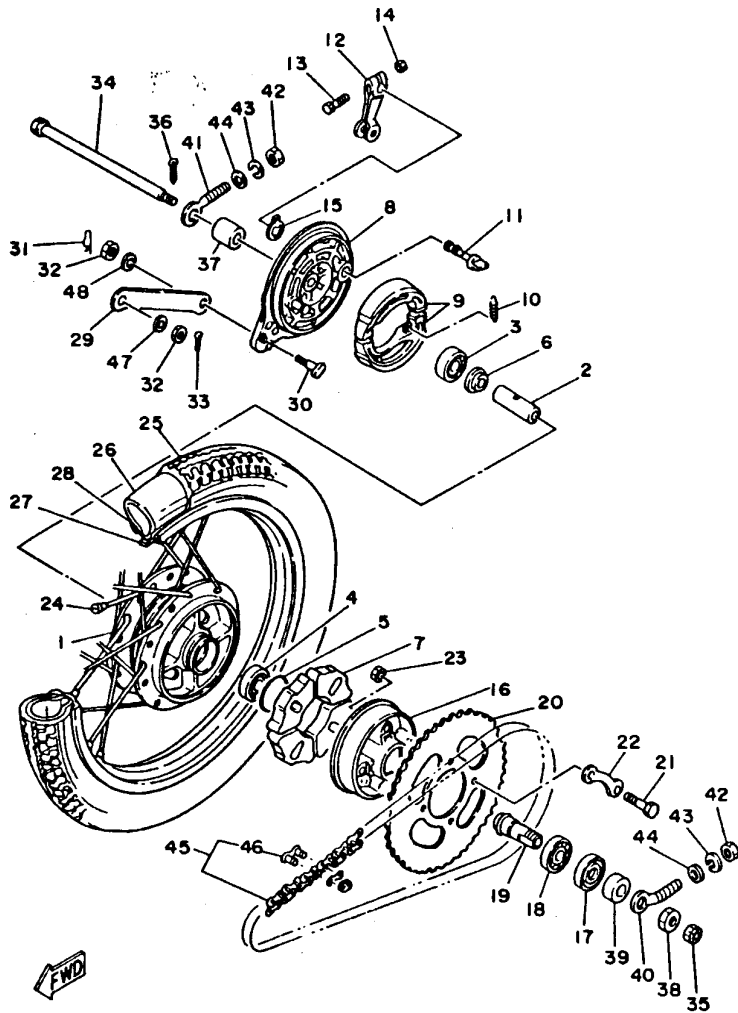


FIG. 24 FRONT WHEEL

RUEDA DELANTERA

REF. NO.	PART NO. CODIGO NO.	DESCRIPTION DESCRIPTION	4GC6	4GC5	3NX6	REMARKS OBSERVACION
27	94322-17078	BAND, RIM (2.25-17) BANDA DE ARO (2.25-17)	1	1	1	INOUE
28	94412-17498	RIM (1.20-17) ARO (1.20-17)	1	1	1	
29	322-25118-00	COVER, HUB DUST CUBIERTA DE MASA PARA POLVO	1	1	1	
30	90387-10277	COLLAR CASQUILLO CON VALONA	1	1	1	
31	296-25181-02	AXLE, WHEEL EJE DE LA RUEDA	1	1	1	
32	90171-10004	NUT, CASTLE TUERCA ENTALLADA	1	1	1	
33	91401-20020	PIN, COTTER PASADOR DE CHAVETA	1	1	1	
34	102-25137-00	RING, STOP ANILLO DE TOPE	1	1	1	
35	93210-14104	O-RING ANILLO O	1	1	1	

D4



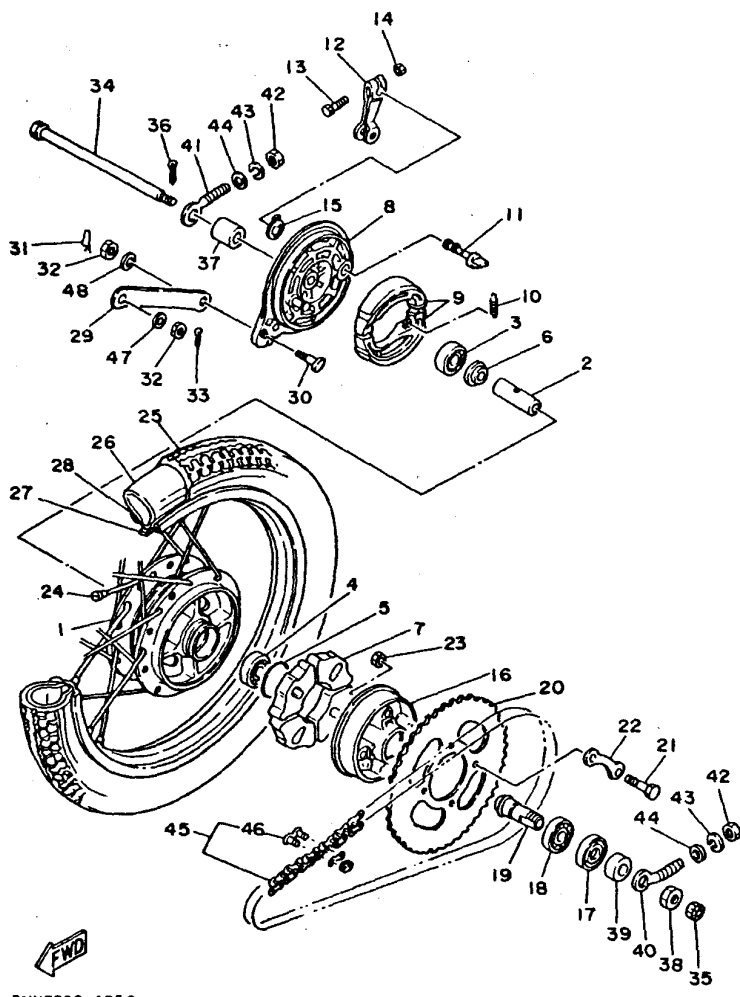
3NX3200-4250

FIG. 25 REAR WHEEL

RUEDA TRASERA

REF. NO.	PART NO. CODIGO NO.	DESCRIPTION DESCRIPTION	4GC6	4GC5	3NX6	REMARKS OBSERVACION
1	18A-25311-00-35	HUB, REAR MASA TRASERA	1	1	1	SL
2	90560-12145	SPACER SEPARADOR	1	1	1	
3	93306-30103	BEARING (B6301Z) COJINETE	1	1	1	
4	93306-30102	BEARING (B6301) COJINETE (B6301)	1	1	1	
5	93210-41041	O-RING ANILLO O	1	1	1	
6	102-25315-00	FLANGE, SPACER SEPARADOR	1	1	1	
7	18A-25364-00	DAMPER AMORTIGUADOR	4	4	4	
8	31J-25321-00-35	PLATE, BRAKE SHOE PLACA DE ZAPATA DE FRENO	1	1	1	SL
9	4KN-W2536-11	BRAKE SHOE SET JUEGO DE ZAPATA DE FRENO	1	1	1	
10	90506-15260	SPRING, TENSION RESORTE DE TENSION	2	2	2	
11	3Y6-25351-00	CAMSHAFT ARBOL DE LEVAS	1	1	1	
12	1T9-25355-00	LEVER, CAMSHAFT PALANCA DE ARBOL DE LEVAS	1	1	1	
13	90101-06278	BOLT TORNILLO	1	1	1	
14	95307-06600	NUT TUERCA	1	1	1	
15	3Y6-2533A-01	PLATE, INDICATOR PLACA INDICADOR	1	1	1	
16	296-25366-01	CLUTCH, HUB EMBRAGUE DE MASA	1	1	1	
17	93106-30004	OIL SEAL SELLO ACEITE	1	1		
18	93306-00438	BEARING COJINETE	1	1	1	UR
19	102-25387-03	AXLE, SPROCKET EJE DE CORONA	1	1	1	
20	122-25438-10	SPROCKET, DRIVEN (38T) CORONA (38T)	1	1		
	3NX-F5438-00	SPROCKET, DRIVEN (38T) CORONA (38T)			1	
21	90101-08672	BOLT TORNILLO	4	4	4	
22	102-25412-00	WASHER ARANDELA	2	2		
	3NX-F5412-00	WASHER ARANDELA			2	
23	90179-08639	NUT TUERCA	4	4	4	
24	18E-25304-00	SPOKE SET, REAR JUEGO DE RAYOS TRASEROS	1	1	1	
25	94125-172T3	TIRE (2.50-17) NEUMATICO (2.50-17)	1	1	1	

D5

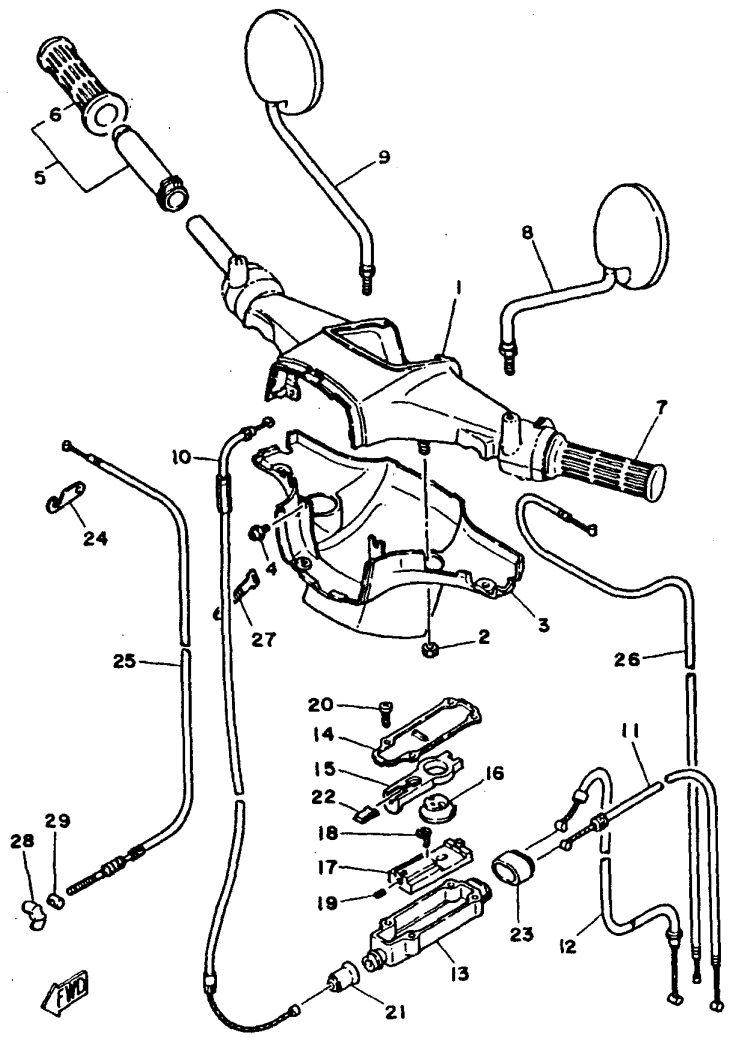


3NX3200-4250

FIG. 25 REAR WHEEL RUEDA TRASERA

REF. NO.	PART NO. CODIGO NO.	DESCRIPTION DESCRIPTION	4GC6	4GC5	3NX6	REMARKS OBSERVACION
26	94222-17269	TUBE (2.25-17) TUBO (2.25-17)	1	1	1	UR INOUE
	94225-17309	TUBE (2.50-17) TUBO (2.50-17)	1	1	1	UR INOUE
27	94322-17078	BAND, RIM (2.25-17) BANDA DE ARO (2.25-17)	1	1	1	INOUE
28	94414-17003	RIM (1.40-17) ARO (1.40-17)	1	1	1	
29	18A-25371-00	BAR, TENSION BARRA TENSORA	1	1		
	59L-F5371-00	BAR, TENSION BARRA TENSORA			1	
30	90109-08183	BOLT PERNO	1	1	1	
31	90468-12007	CLIP PRESILLA	1	1	1	
32	95307-08700	NUT TUERCA	2	2	2	
33	91401-20015	PIN, COTTER PASADOR DE CHAVETA	1	1	1	
34	401-25181-01	AXLE, WHEEL EJE DE LA RUEDA	1	1	1	
35	90171-12005	NUT, CASTLE TUERCA ENTALLADA	1	1	1	
36	91401-30025	PIN, COTTER PASADOR DE CHAVETA	1	1	1	
37	90387-12412	COLLAR CASQUILLO CON VALONA	1	1	1	
38	90170-18165	NUT TUERCA	1	1	1	
39	90387-18143	COLLAR CASQUILLO CON VALONA	1	1	1	
40	127-25388-01	PULLER, CHAIN 1 TIRADOR DE CADENA 1	1	1	1	
41	102-25389-00	PULLER, CHAIN 2 TIRADOR DE CADENA 2	1	1	1	
42	95307-06600	NUT TUERCA	2	2	2	
43	92907-06100	WASHER, SPRING ARANDELA	2	2	2	
44	90201-061A5	WASHER, PLATE ARANDELA PLANA	2	2	2	
45	94580-52100	CHAIN (D.I.D. 420M 100L) CADENA (D.I.D. 420M 100L)	1	1	1	
46	94680-52001	JOINT, CHAIN(DID 420M) CONECTOR DE CADENA (DID 420M)	1	1	1	
47	92907-08200	WASHER ARANDELA	1	1	1	
48	92907-08100	WASHER, SPRING ARANDELA	1	1	1	

D6

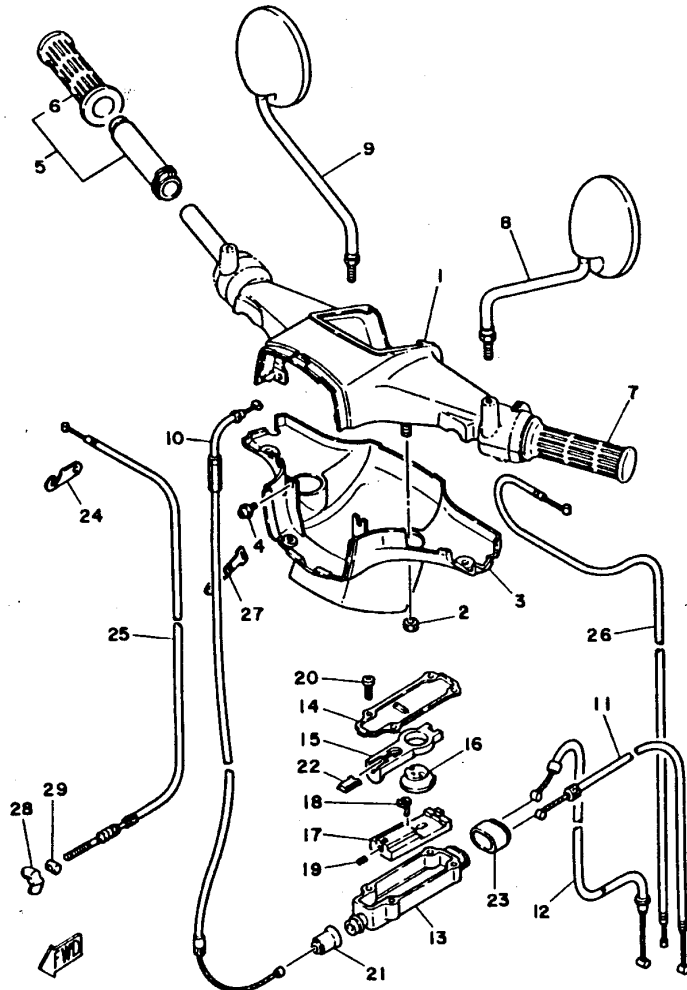


4LDI646-3250

FIG. 26 STEERING HANDLE, CABLE MANUBRIO, CABLE

REF. NO.	PART NO. CODIGO NO.	DESCRIPTION DESCRIPTION				REMARKS OBSERVACION
			4GC6	4GC5	3NX6	
1	3E1-26210-10-98	HANDLE MANUBRIO	1	1	1	LGB
2	95307-08700	NUT TUERCA	2	2	2	
3	3E1-26215-00-33	COVER, LOWER CUBIERTA INFERIOR	1	1	1	YB
4	90159-05028	SCREW, WITH WASHER TORNILLO CON VALONA	2	2		
	90159-05022	SCREW, WITH WASHER TORNILLO CON VALONA			2	
5	3E1-26240-10	GRIP ASSY EMPUNADURA COMPLETA	1	1		
	3NX-F6240-00	GRIP ASSY EMPUNADURA COMPLETA			1	
6	116-26242-00	.GRIP (RIGHT) .EMPUNADURA (MD)	1	1		
	3NX-F6242-00	.GRIP (RIGHT) .EMPUNADURA (MD)			1	
7	116-26241-00	GRIP (LEFT) EMPUNADURA (MI)	1	1		
	3NX-F6241-00	GRIP (LEFT) EMPUNADURA (MI)			1	
8	1Y0-26290-00	REAR VIEW MIRROR ASSY (R.H) ESPEJO COMPLETO (DERECHO)	1	1		
	59L-F6280-00	REAR VIEW MIRROR ASSY (LEFT) ESPEJO COMPLETO (IZQUIERDO)			1	
9	1Y0-26290-10	REAR VIEW MIRROR ASSY (L.H) ESPEJO COMPLETO (IZQUIERDO)	1	1		
	59L-F6290-00	REAR VIEW MIRROR ASSY (RIGHT) ESPEJO COMPLETO (DERECHO)			1	
10	3E1-26311-04	CABLE, THROTTLE 1 CABLE DE ACELERADOR 1	1	1	1	
11	18A-26312-01	CABLE, THROTTLE 2 CABLE DE ACELERADOR 2	1	1	1	
12	3E1-26321-03	CABLE, PUMP CABLE DE BOMBA	1	1	1	
13	3J0-26261-00	CONNECTOR, CABLE CONECTOR DE CABLE	1	1	1	
14	3J0-26262-00	CAP, CABLE CONNECTOR TAPA DE CABLE CONECTOR	1	1	1	
15	3E1-26274-00	GUIDE, ROTOR GUIA DE ROTOR	1	1	1	
16	2T5-26273-00	ROTOR ROTOR	1	1	1	
17	3E1-26244-00	SLIDER, THROTTLE CORREDERA DE OBTURADOR	1	1	1	
18	2T5-26267-00	PIN PASADOR	1	1	1	
19	90501-06611	SPRING, COMPRESSION RESORTE DE COMPRESION	1	1	1	
20	90167-03004	SCREW, TAPPING TORNILLO DE ROSCA HEMBRA	4	4	4	
21	360-26266-00	BOOT, CYLINDER FUNDA DE CILINDRO	1	1	1	

D7

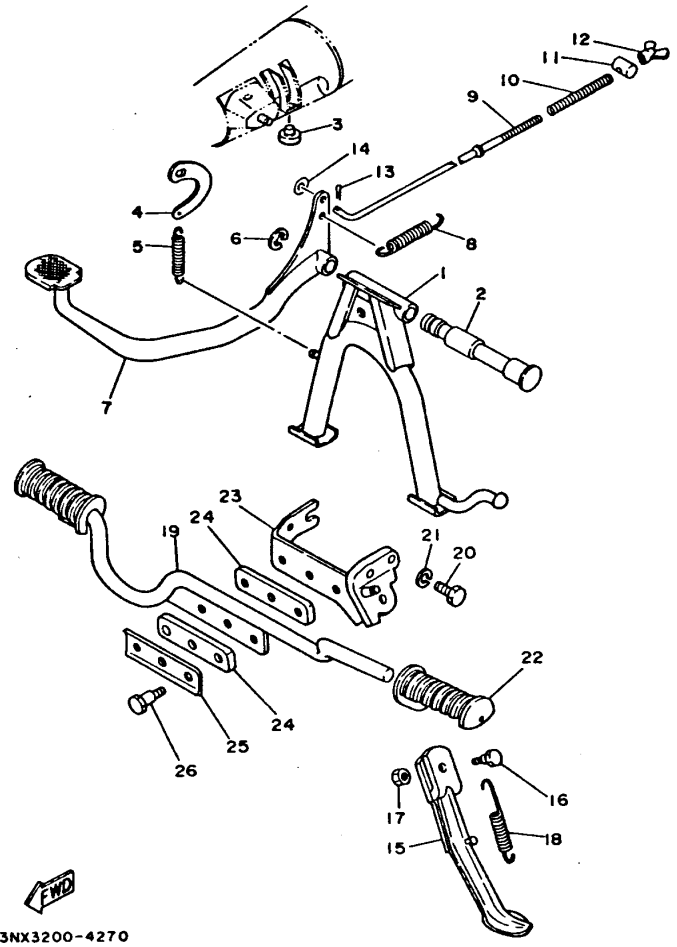


4LDI646-3250

FIG. 26 STEERING HANDLE. CABLE MANUBRIO. CABLE

REF. NO.	PART NO. CODIGO NO.	DESCRIPTION DESCRIPTION	4GC8	4GC5	9NX6	REMARKS OBSERVACION
22	3E1-26245-00	STOPPER, CABLE TOPE DE CABLE	1	1	1	
23	3J0-26272-00	CAP TAPON	1	1	1	
24	3E1-26393-00	HOLDER SOPORTE	1	1	1	
25	3E1-26341-00	CABLE, BRAKE CABLE DE FRENO	1	1	1	
26	3E1-26331-00	CABLE, STARTER 1 CABLE DE ARRANQUE	1	1	1	
27	296-82593-00	BAND BANDA	1	1	1	
28	90179-06411	NUT TUERCA	1	1		
	90175-06013	NUT, WING TUERCA MARIPOSA			1	
29	90249-12008	PIN PASADOR	1	1	1	

D8



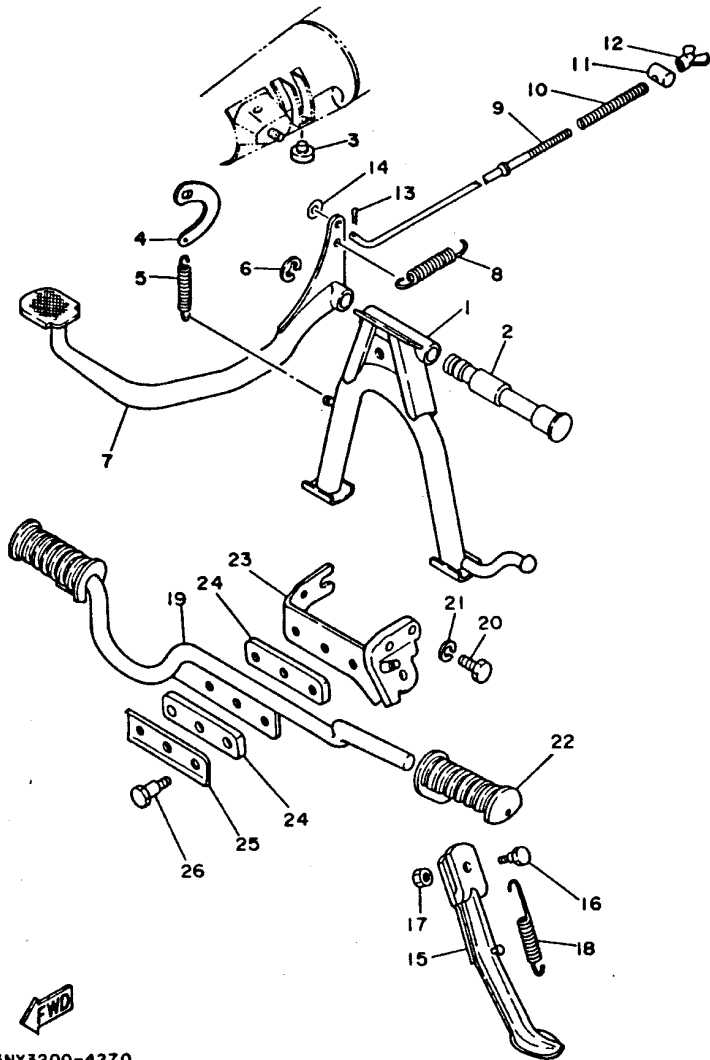
3NX3200-4270

FIG. 27 STAND. FOOTREST

SOPORTE. APOYAPIE

REF. NO.	PART NO. CODIGO NO.	DESCRIPTION DESCRIPTION	4GC8	4GC5	3NX6	REMARKS OBSERVACION
1	266-27111-10	STAND, MAIN PUNTAL PRINCIPAL	1	1		
	3NX-F7111-00	STAND, MAIN PUNTAL PRINCIPAL			1	
2	517-27112-01	SHAFT, MAIN STAND EJE DE PUNTAL PRINCIPAL	1	1		
	3NX-F7112-00	SHAFT, MAIN STAND EJE DE PUNTAL PRINCIPAL			1	
3	116-27114-00	STOPPER, MAIN STAND TOPE DE PUNTAL PRINCIPAL	1	1		
	3NX-F7114-00	STOPPER, MAIN STAND TOPE DE PUNTAL PRINCIPAL			1	
4	109-27115-00	LINK, MAIN STAND CONEXION DE PUNTAL PRINCIPAL	1	1		
	3NX-F7115-00	LINK, MAIN STAND CONEXION DE PUNTAL PRINCIPAL			1	
5	90506-29054	SPRING, TENSION RESORTE DE TENSION	1	1	1	
6	93430-12008	CIRCLIP BOLA	1	1	1	
7	3AB-27211-01	PEDAL, BRAKE PEDAL DE FRENO	1	1		
	3NX-F7211-01	PEDAL, BRAKE PEDAL DE FRENO			1	
8	90506-20041	SPRING, TENSION RESORTE DE TENSION	1	1	1	
9	18A-27231-00	ROD, BRAKE VARILLA DE FRENO	1	1		
	3NX-F7231-00	ROD, BRAKE VARILLA DE FRENO			1	
10	90501-10245	SPRING, COMPRESSION RESORTE DE COMPRESION	1	1	1	
11	90249-12008	PIN PASADOR	1	1	1	
12	90179-06411	NUT TUERCA	1	1		
	90175-06013	NUT, WING TUERCA MARIPOSA			1	
13	91401-20012	PIN, COTTER PASADOR DE CHAVETA	1	1	1	
14	92907-06600	WASHER, PLATE ARANDELA	1	1	1	
15	18A-27311-10	STAND, SIDE PUNTAL LATERAL	1	1		
	3NX-F7311-00	STAND, SIDE PUNTAL LATERAL			1	
16	90109-08034	BOLT PERNO	1	1	1	
17	95307-08700	NUT TUERCA	1	1	1	
18	90506-25047	SPRING, TENSION RESORTE DE TENSION	1	1	1	
19	18A-27411-01	FOOTREST 1 APOYAPIE 1	1	1		

D9



3NX3200-4270

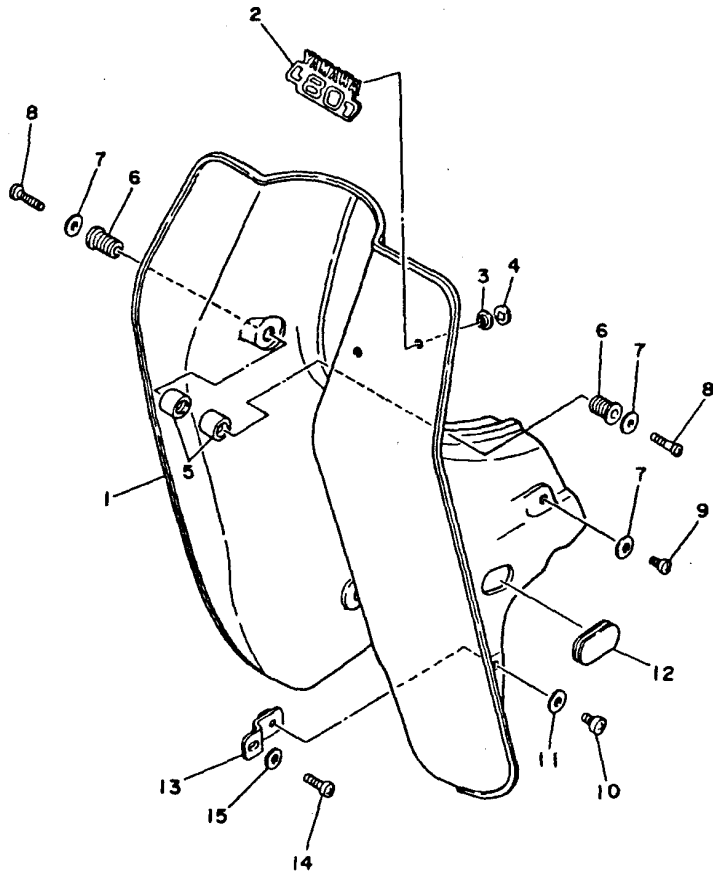
FIG. 27 STAND. FOOTREST

SOPORTE. APOYAPIE

REF. NO.	PART NO. CODIGO NO.	DESCRIPTION DESCRIPTION	4GCS	4GCS	3NX6	REMARKS OBSERVACION
19	3NX-F7411-00	FOOTREST 1 APOYAPIE 1			1	
20	97027-10020	BOLT PERNO	1	1	1	
21	92907-10600	WASHER, PLATE ARANDELA	1	1	1	
22	441-27413-01	COVER, FOOTREST CUBIERTA DE APOYAPIE	2	2		
	59M-F7413-00	COVER, FOOTREST CUBIERTA DE APOYAPIE			2	
23	18A-27412-00	BRACKET, FOOTREST 1 SOPORTE DE APOYAPIE 1	1	1		
	3NX-F7412-00	BRACKET, FOOTREST 1 SOPORTE DE APOYAPIE 1			1	
24	18A-27414-00	DAMPER, FOOTREST AMORTIGUADOR DE APOYAPIE	2	2		
	3NX-F7414-00	DAMPER, FOOTREST AMORTIGUADOR DE APOYAPIE			2	
25	18A-27417-00	WASHER, FOOTREST ARANDELA DE APOYAPIE	1	1		
	3NX-F7417-00	WASHER, FOOTREST ARANDELA DE APOYAPIE			1	
26	90109-08686	BOLT PERNO	3	3	3	

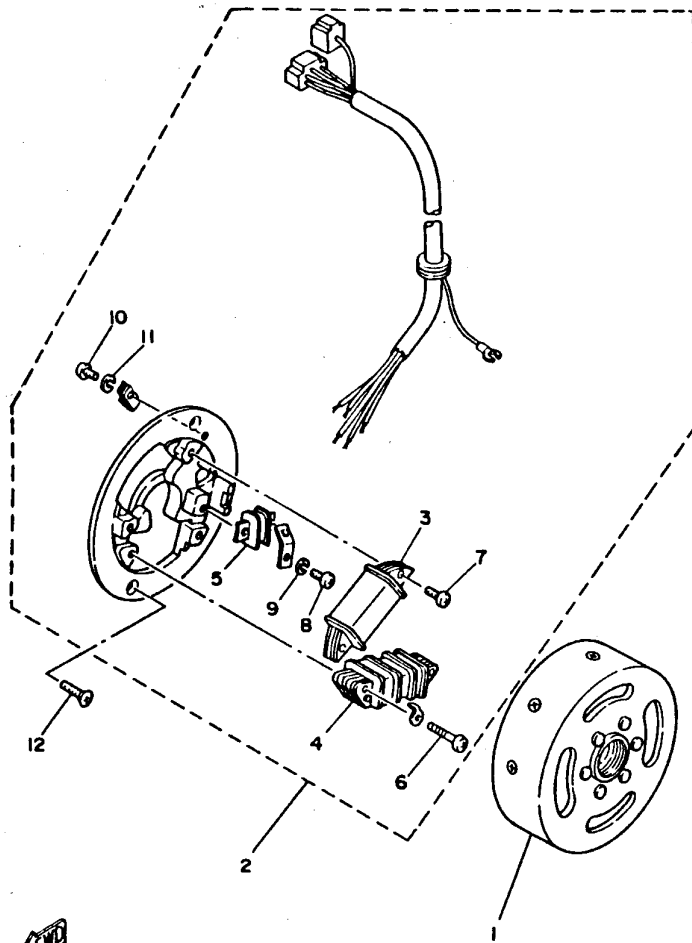
FIG. 28 LEG SHIELD

PATA PROTEGIDA



REF. NO.	PART NO. CODIGO NO.	DESCRIPTION DESCRIPTION	4GC6	4GC5	3NX6	REMARKS OBSERVACION
1	18A-28311-00	LEG SHIELD 1 PROTECCION DE PATA 1	1	1	1	
2	3E5-28315-00	EMBLEM EMBLEMA	1	1	1	
3	116-28316-01	DAMPER, EMBLEM AMORTIGUADOR EMBLEMA	2	2	2	
4	90183-04047	NUT, SPRING TUERCA DE RESORTE	2	2	2	
5	296-28373-00	COLLAR COLLAR	2	2	2	
6	296-28329-00	SPACER ESPACIADOR	2	2	2	
7	90201-06380	WASHER, PLATE ARANDELA PLANA	4	4	4	
8	98507-06040	SCREW, PAN HEAD TORNILLO DE CABEZA CON PLANA	2	2	2	
9	98507-06016	SCREW, PAN HEAD TORNILLO DE CABEZA CON PLANA	2	2	2	
10	98507-06016	SCREW, PAN HEAD TORNILLO DE CABEZA CON PLANA	2	2	2	
11	92907-06600	WASHER, PLATE ARANDELA	2	2	2	
12	296-28349-01	CAP TAPA	1	1	1	
13	18A-28322-00	STAY 2 SOPORTE 2	2	2	2	
14	98507-06016	SCREW, PAN HEAD TORNILLO DE CABEZA CON PLANA	2	2	2	
15	90201-06380	WASHER, PLATE ARANDELA PLANA	2	2	2	


4GC3200-6280



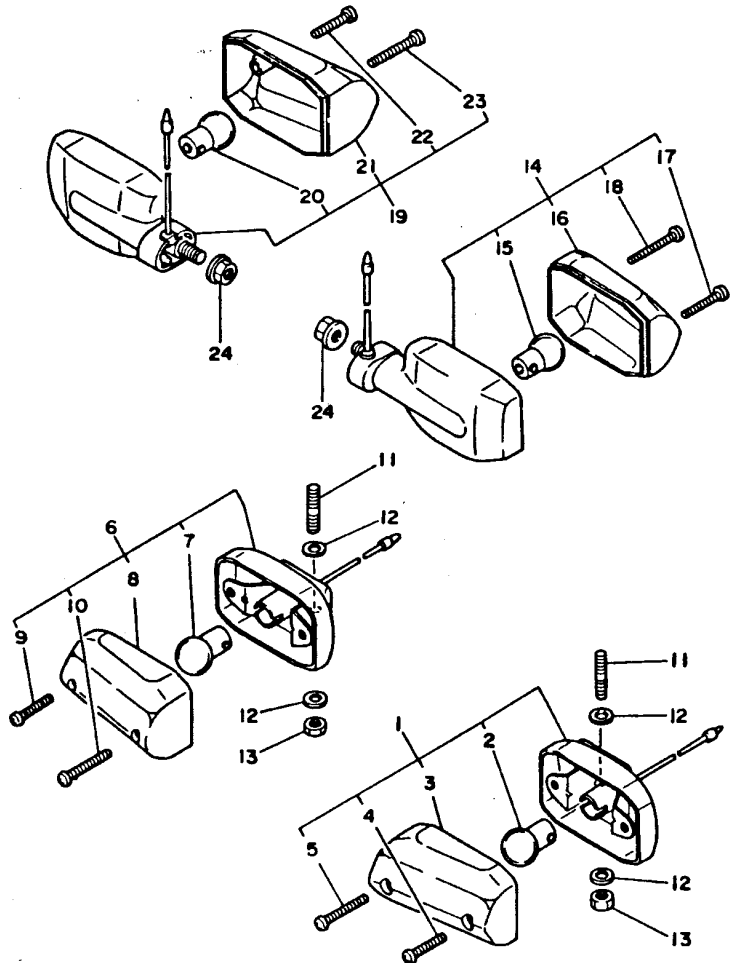
HA440-5280

FIG. 29 GENERATOR

GENERADOR

REF. NO.	PART NO. CODIGO NO.	DESCRIPTION DESCRIPTION	4GC6	4GC5	3NKG	REMARKS OBSERVACION
1	4GC-85550-00	ROTOR ASSY ROTOR COMPLETO	1	1	1	
2	4GC-85560-01	BASE ASSY CONJUNTO BASE	1	1	1	
3	3T5-85520-M1	.COIL, CHARGE .BOBINA DE CARGA	1	1	1	
4	18Y-81313-M0	.COIL, LIGHTING 1 .BOBINA DE ILUMINACION 1	1	1	1	
5	2AL-85580-M0	.COIL, PULSER .BOBINA DE PULSACION	1	1	1	
6	98511-04025	.SCREW, PAN HEAD .TORNILLO DE CABEZA CON PLANA	2	2	2	
7	98511-04012	.SCREW, PAN HEAD .TORNILLO DE CABEZA CON PLANA	2	2	2	
8	98501-04010	.SCREW, PAN HEAD .TORNILLO DE CABEZA CON PLANA	1	1	1	
9	92901-04100	.WASHER, SPRING .ARANDELA	1	1	1	
10	98501-04006	.SCREW, PAN HEAD .TORNILLO DE CABEZA CON PLANA	1	1	1	
11	92901-04100	.WASHER, SPRING .ARANDELA	1	1	1	
12	90151-05055	SCREW, COUNTERSUNK TORNILLO EMBUTIDO	2	2	2	

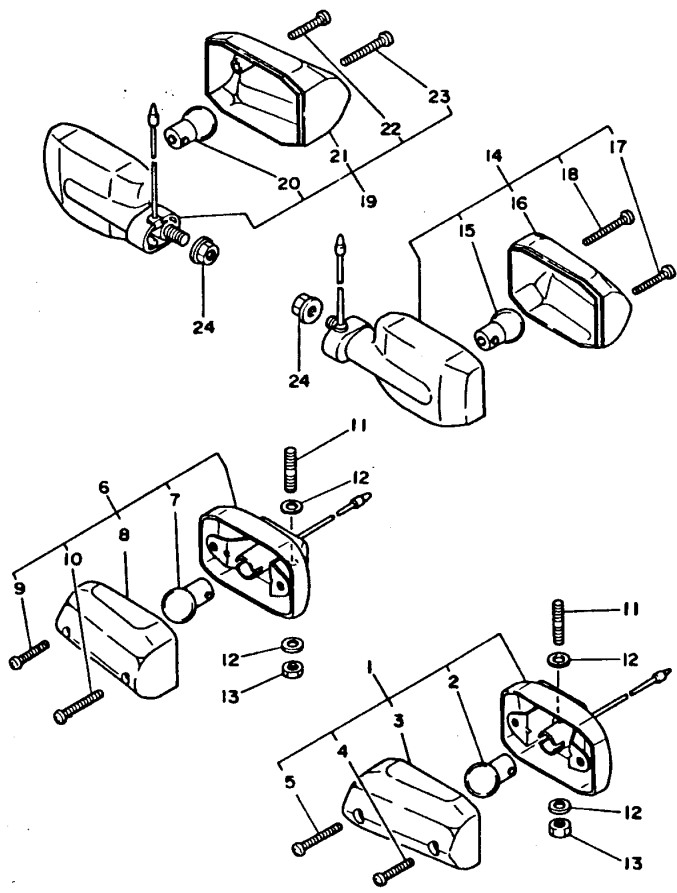
D12



59L261-5290

FIG. 30 FLASHER LIGHT LUZ DE DESTELLADOR

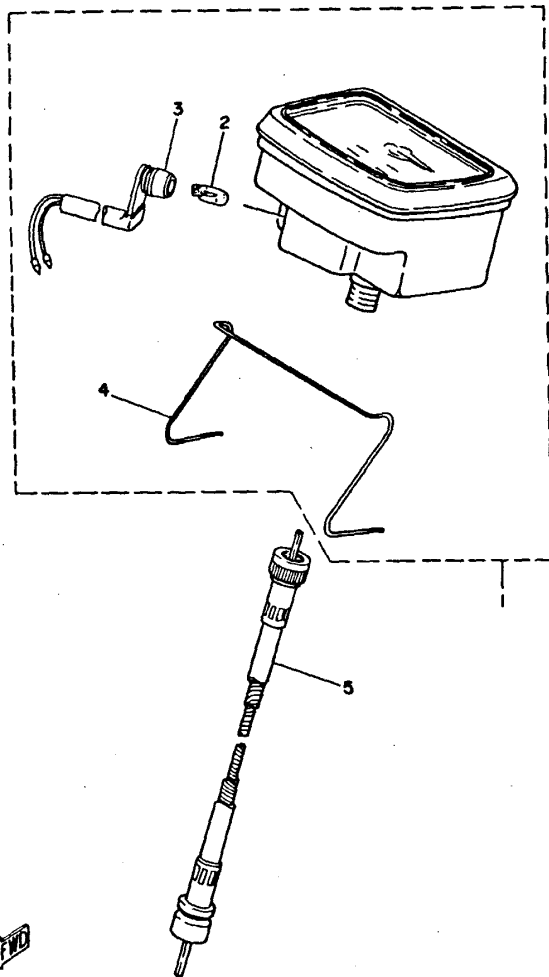
REF. NO.	PART NO. CODIGO NO.	DESCRIPTION DESCRIPTION	4GC6	4GC5	3NX6	REMARKS OBSERVACION
1	18A-83310-10	FRONT FLASHER LIGHT ASSY 1	1	1		
	3NX-H3310-00	FRONT FLASHER LIGHT ASSY 1			1	
2	1M3-83311-10	.BULB, FLASHER	1	1		
	3NX-H3311-00	.BOMBILLA DE DESTELLADOR			1	
3	18A-83312-00	.LENS, FLASHER	1	1		
	3NX-H3312-00	.LENTE, DE DESTELLADOR			1	
4	98501-03028	.SCREW, PAN HEAD	1	1		
	98501-03030	.SCREW, PAN HEAD			1	
5	98501-03036	.SCREW, PAN HEAD	1	1		
	3NX-H3333-00	.SCREW, LENS FITTING			1	
6	18A-83320-10	FRONT FLASHER LIGHT ASSY 2	1	1		
	3NX-H3320-00	FRONT FLASHER LIGHT ASSY 2			1	
7	1M3-83311-10	.BULB, FLASHER	1	1		
	3NX-H3311-00	.BOMBILLA DE DESTELLADOR			1	
8	18A-83322-00	.LENS, FLASHER 2	1	1		
	3NX-H3322-00	.LENTE DE INTERMITENTE 2			1	
9	98501-03028	.SCREW, PAN HEAD	1	1		
	98501-03030	.SCREW, PAN HEAD			1	
10	98501-03036	.SCREW, PAN HEAD	1	1		
	3NX-H3333-00	.SCREW, LENS FITTING			1	
11	90116-06282	BOLT, STUD	2	2	2	
	92907-06200	WASHER	2	2	4	
	95707-06500	NUT, FLANGE	2	2		
	95307-06700	NUT			2	
14	18A-83330-10	REAR FLASHER LIGHT ASSY 1	1	1		
	3NX-H3330-00	REAR FLASHER LIGHT ASSY 1			1	
15	1M3-83311-10	.BULB, FLASHER	1	1		
		.BOMBILLA DE DESTELLADOR				



59L261-5290

FIG. 30 FLASHER LIGHT LUZ DE DESTELLADOR

REF. NO.	PART NO. CODIGO NO.	DESCRIPTION DESCRIPTION	4GC6	4GC5	3NX6	REMARKS OBSERVACION
15	3NX-H3311-00	.BULB, FLASHER .BOMBILLA DE DESTELLADOR			1	
16	18A-83322-00	.LENS, FLASHER 2 .LENTE DE INTERMITENTE 2	1	1		
	3NX-H3322-00	.LENS, FLASHER 2 .LENTE DE INTERMITENTE 2			1	
17	98501-03028	.SCREW, PAN HEAD .TORNILLO DE CABEZA CON PLANA	1	1		
	98501-03030	.SCREW, PAN HEAD .TORNILLO DE CABEZA CON PLANA			1	
18	98501-03036	.SCREW, PAN HEAD .TORNILLO DE CABEZA CON PLANA	1	1		
	3NX-H3333-00	.SCREW, LENS FITTING .TORNILLO ACCESORIO DE LENTE			1	
19	18A-83340-10	FLASHER LIGHT ASSY 2 DESTELLADOR DE LUZ COMPL.	1	1		
	3NX-H3340-00	FLASHER LIGHT ASSY 2 DESTELLADOR DE LUZ COMPL.			1	
20	1M3-83311-10	.BULB, FLASHER .BOMBILLA DE DESTELLADOR	1	1		
	3NX-H3311-00	.BULB, FLASHER .BOMBILLA DE DESTELLADOR			1	
21	18A-83312-00	.LENS, FLASHER .LENTE DE DESTELLADOR	1	1		
	3NX-H3312-00	.LENS, FLASHER .LENTE DE DESTELLADOR			1	
22	98501-03028	.SCREW, PAN HEAD .TORNILLO DE CABEZA CON PLANA	1	1		
	98501-03030	.SCREW, PAN HEAD .TORNILLO DE CABEZA CON PLANA			1	
23	98501-03036	.SCREW, PAN HEAD .TORNILLO DE CABEZA CON PLANA	1	1		
	3NX-H3333-00	.SCREW, LENS FITTING .TORNILLO ACCESORIO DE LENTE			1	
24	95707-08500	.NUT, FLANGE TUERCA DE BRIDA	2	2	2	



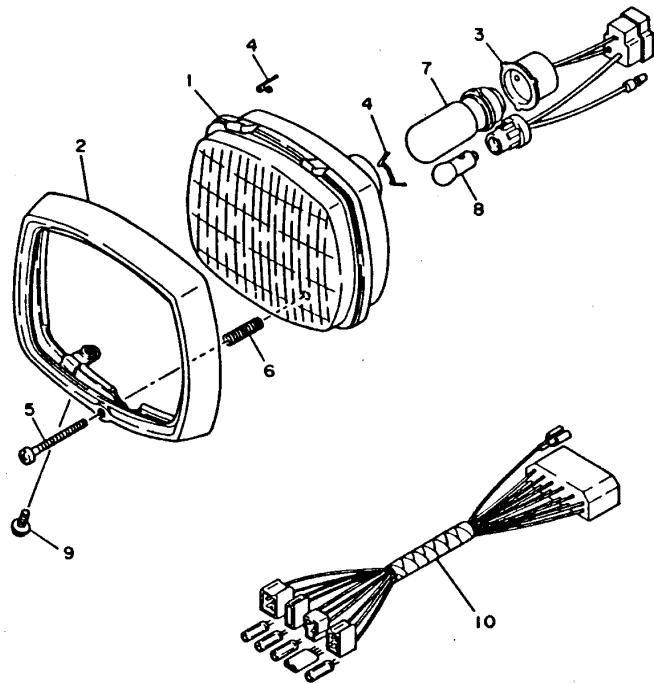
4LD1646-3300

FIG. 31 METER

MEDIDOR

REF. NO.	PART NO. CODIGO NO.	DESCRIPTION DESCRIPTION	4GC8	4GC5	3NX6	REMARKS OBSERVACION
1	3E1-83510-10	SPEEDOMETER ASSY VELOCIMETRO COMPL.	1	1	1	KM/H
2	4N0-83516-00	BULB (6V-3W) .AMPOLLETA (6V-3W)	1	1	1	
3	1LM-83520-50	SOCKET CORD ASSY .ENCASTRE COMPLETO	1	1	1	
4	3E1-83515-00	SPRING, METER .RESORTE DE MEDIDOR	1	1	1	
5	3E1-83550-00	SPEEDOMETER CABLE ASSY CABLE DE VELOCIMETRO COMPLETO.	1	1	1	

D15



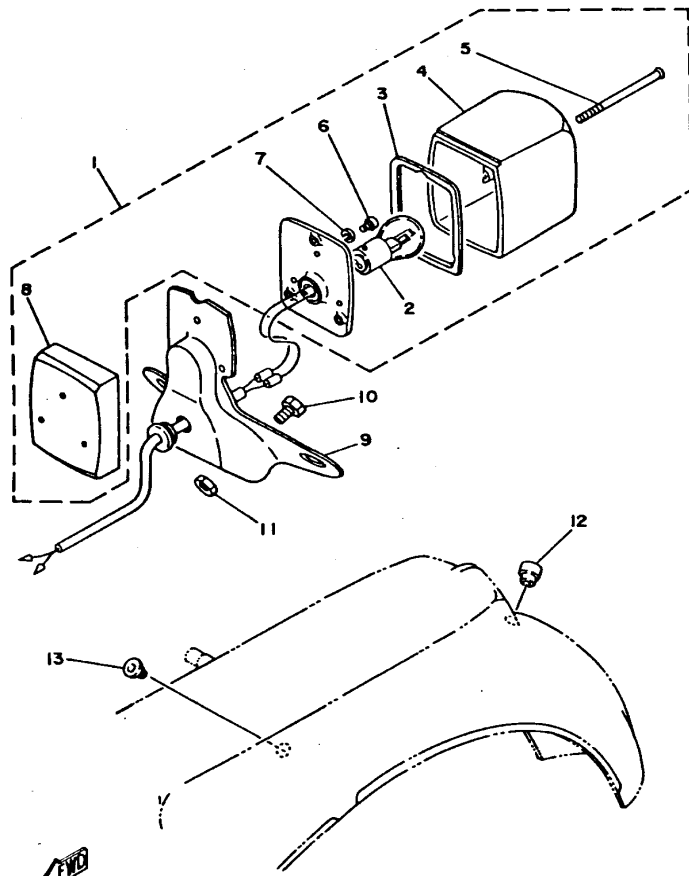
3NX3200-4340

FIG. 32 HEADLIGHT

FARO DELANTERO

REF. NO.	PART NO. CODIGO NO.	DESCRIPTION DESCRIPTION	4GC6	4GC5	3NX6	REMARKS OBSERVACION
1	3E1-84120-10	LENS ASSY LENTES COMPLETO	1	1	1	
2	3E1-84115-10	RIM, HEADLIGHT ARO DE FARO DELANTERO	1	1	1	
3	3E1-84112-10	SOCKET ENCASTRE	1	1	1	
4	3E1-84124-10	SPRING, SET JUEGO DE RESORTES	2	2	2	
5	2E9-84131-00	SCREW, RIM ADJUSTER TORNILLO AJUSTADOR DE ARO	1	1	1	
6	2E9-84132-00	SPRING, SCREW RESORTE DE TORNILLO	1	1	1	
7	248-84114-00	BULB, HADLIGHT (6V-25/25W) AMPOLLETA DE FARO DELANTERO	1	1	1	YELLOW
8	317-84147-30	BULB (6V-3W) AMPOLLETA LUZ PILOTO (6V-13W)	1	1	1	
9	90159-05028	SCREW, WITH WASHER TORNILLO CON VALONA	1	1	1	
10	4GC-84159-00	CORD, HEADLIGHT CABLE DE FARO DELANTERO	1	1		
	3NX-H4159-00	CORD, HEADLIGHT CABLE DE FARO DELANTERO			1	

E2



4LD1646-3320

FIG. 33 TAILLIGHT

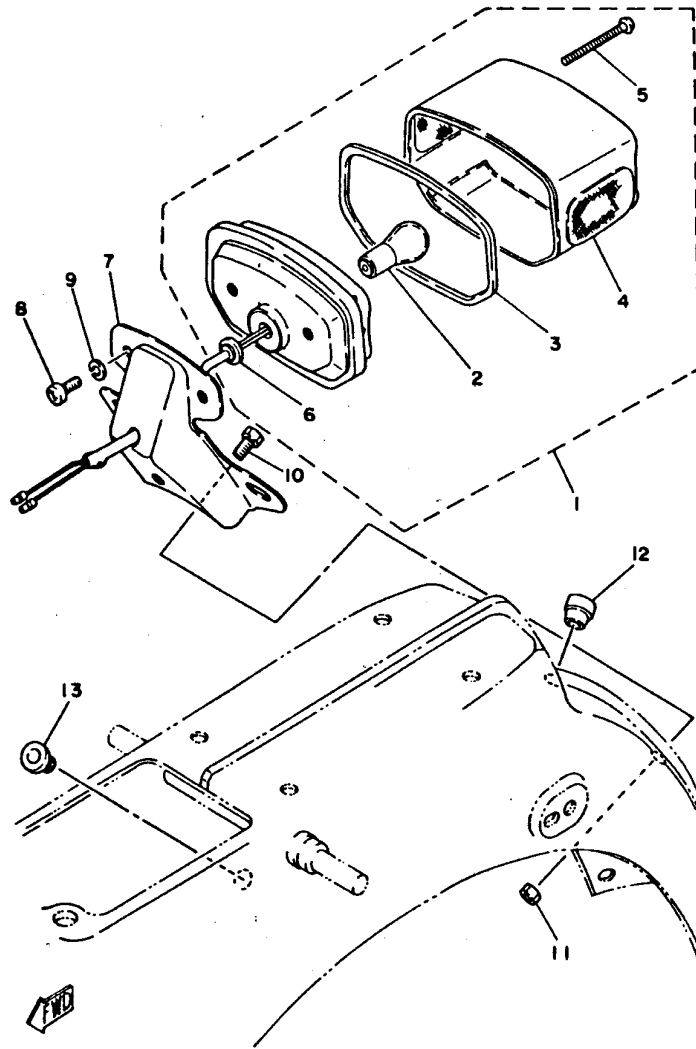
LUZ DE COLA

REF. NO.	PART NO. CODIGO NO.	DESCRIPTION DESCRIPTION	4GC6	4GC5	3NX6	REMARKS OBSERVACION
1	18Y-84510-00	TAILLIGHT UNIT ASSY FARO TRASERO COMPLETO	1	1		
2	122-84514-30	.BULB (6V-17/5.3W) .AMPOLLETA (6V-17/5.3W)	1	1		
3	164-84723-00	.GASKET, TAIL LENS .EMPAQUE LENTE FARO TRASERO	1	1		
4	164-84721-00	.LENS, TAILLIGHT .LENTE DE FARO TRASERO	1	1		
5	201-84724-00	.SCREW, LENS FITTING .TORNILLO ACCESORIO DE LENTE	3	3		
6	98501-04010	.SCREW, PAN HEAD .TORNILLO DE CABEZA CON PLANA	3	3		
7	92901-04100	.WASHER, SPRING .ARANDELA	3	3		
8	201-84716-00	.COVER, TAILLIGHT .CUBIERTA DE FARO TRASERO	1	1		
9	330-84551-00-35	BRACKET, LICENCE SOPORTE DE LICENCIA	1	1		SL
10	97007-06012	BOLT PERNO	2	2		
11	95307-06600	NUT TUERCA	2	2		
12	90480-12013	GROMMET TAPON	1	1		
13	90480-16112	GROMMET TAPON	1	1		

E3

FIG. 34 TAILLIGHT 2

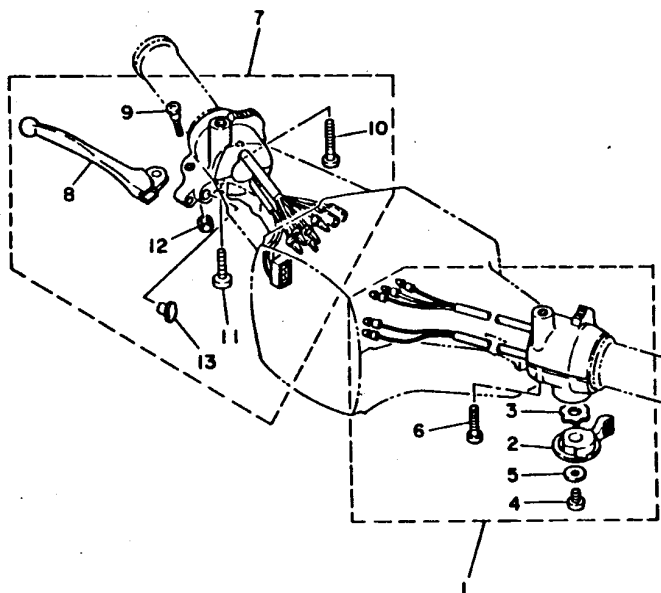
LUZ DE COLA 2



59L261-5320

REF. NO.	PART NO. CODIGO NO.	DESCRIPTION DESCRIPTION	4GC6	4GC5	3NX6	REMARKS OBSERVACION
1	3NX-H4510-10	TAILLIGHT UNIT ASSY FARO TRASERO COMPLETO			1	
2	3NX-H4514-00	BULB AMPOLLETA			1	
3	3NX-H4523-00	GASKET, LENS EMPAQUE DE LENTE			1	
4	3NX-H4521-00	LENS, TAILLIGHT LENTE DE FARO TRASERO			1	
5	3NX-H4524-00	SCREW, LENS FITTING TORNILLO ACCESORIO DE LENTE			1	
6	3NX-H4718-00	GROMMET ANILLO PROTECTOR			1	
7	296-84551-00-35	BRACKET, LICENCE SOPORTE DE LICENCIA			1	SL
8	92501-06010	SCREW, PAN HEAD TORNILLO CABEZA CONICA PLANA			2	
9	92901-06100	WASHER, SPRING ARANDELA			2	
10	97002-06012	BOLT PERNO			2	
11	95302-06600	NUT TUERCA			2	
12	90480-12013	GROMMET TAPON			1	
13	90480-16112	GROMMET TAPON			1	

FIG. 35 HANDLE SWITCH. LEVER INTERRUPTOR DE MANIJA. PALANCA



REF. NO.	PART NO. CODIGO NO.	DESCRIPTION DESCRIPTION	4GC6	4GC5	3N26	REMARKS OBSERVACION
1	18A-83975-02	SWITCH, HANDLE 2 INTERRUPTOR MANIJA 2	1	1	1	
2	18A-83941-00	.LEVER, STARTER .PALANCA DE ARRANQUE	1	1	1	
3	90209-10131	.WASHER .ARANDELA DE SEPARACION	1	1	1	
4	98507-06008	.SCREW, PAN HEAD .TORNILLO DE CABEZA CON PLANA	1	1	1	
5	92907-06600	.WASHER, PLATE .ARANDELA	1	1	1	
6	98507-05025	.SCREW, PAN HEAD .TORNILLO DE CABEZA CON PLANA	3	3	3	
7	59L-82920-01	LEVER HOLDER ASSY (RIGHT) SOPORTE DE LEVA COMPLT 2	1	1	1	
8	122-83922-01	.LEVER 2 .PALANCA 2	1	1	1	
9	90149-05119	.SCREW .TORNILLO DE REGLAJE	1	1	1	
10	98507-05035	.SCREW, PAN HEAD .TORNILLO DE CABEZA CON PLANA	1	1	1	
11	98507-05025	.SCREW, PAN HEAD .TORNILLO DE CABEZA CON PLANA	2	2	2	
12	95607-05100	.NUT, U .TUERCA AUTOBLOCANTE	1	1	1	
13	503-83956-10	.CAP 1 .TAPA 1	1	1	1	

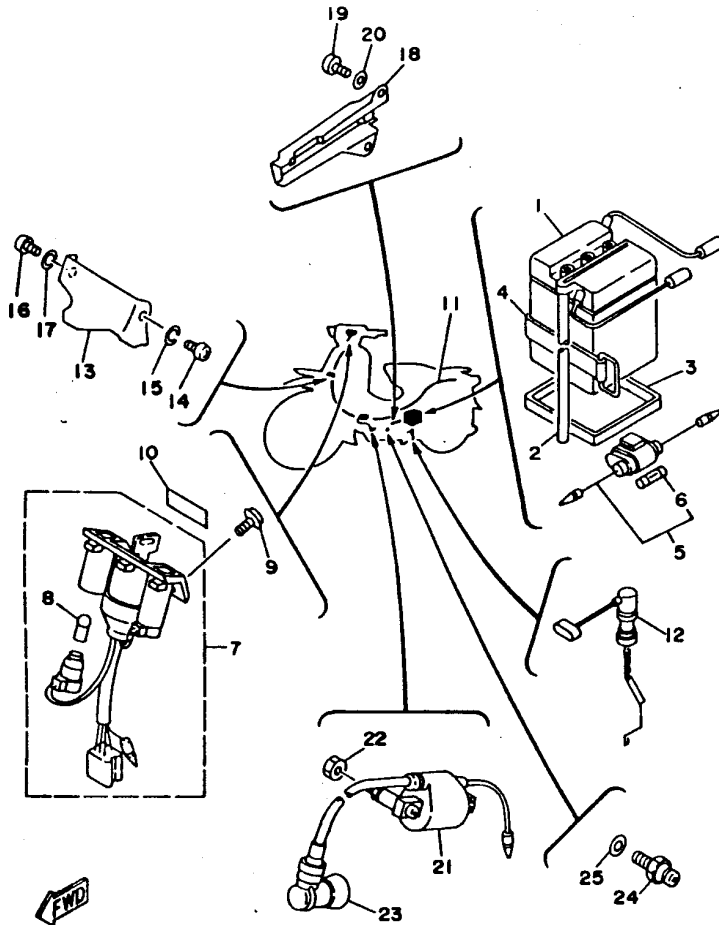


3VJ1440-0330

E5

FIG. 36 ELECTRICAL 1

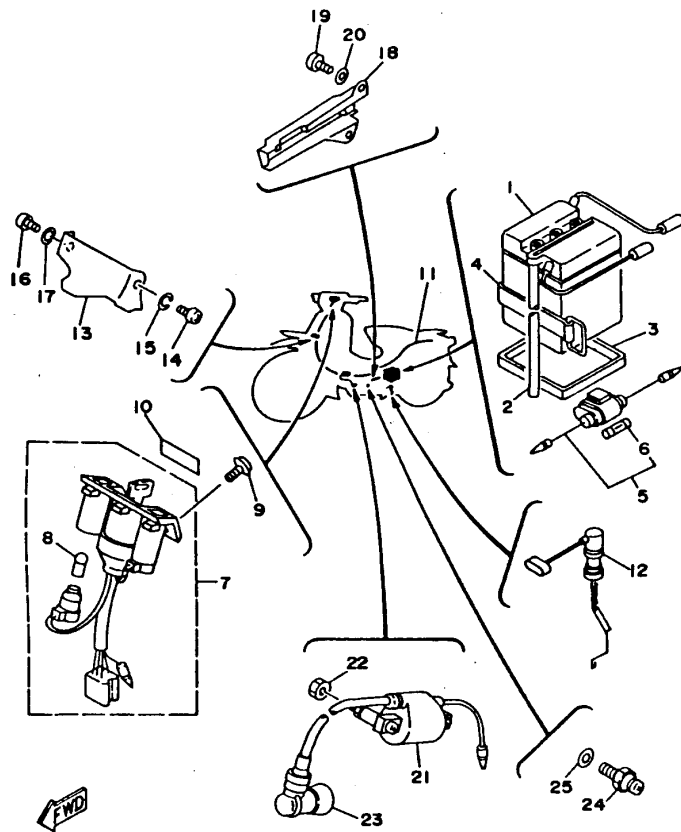
EQUIPO ELECTRICO 1



46C3200-6350

REF. NO.	PART NO. CODIGO NO.	DESCRIPTION DESCRIPTION	4GC6	4GC5	3NX6	REMARKS OBSERVACION
1	34U-82110-10	BATTERY ASS'Y (GS 6N4-2A-9) BATERIA COMPLETA (GS 6N4-2A-9)	1	1	1	
2	90445-08170	HOSE TUBO	1	1	1	
3	268-82122-00	SEAT, BATTERY ASIENTO DE BATERIA	1	1		
	3NX-H2122-00	SEAT, BATTERY ASIENTO DE BATERIA			1	
4	1E6-82131-00	BAND, BATTERY TIRANTE DE BATERIA	1	1	1	
5	55K-82150-01	FUSE HOLDER ASSY PORTA-FUSIBLES COMPLETO	1	1	1	
6	116-82151-00	.FUSE (10A) .FUSIBLE (10A)	2	2	2	
7	4GC-8251A-00	MAIN SWITCH PILOT LIGHT ASSY CONJUNTO DE LLAVE Y CONTROL	1	1	1	
8	122-83516-10	.BULB (6V-3W) .AMPOLLETA (6V-3W)	2	2	2	
9	90159-04191	SCREW, WITH WASHER TORNILLO CON VALONA	2	2	2	
10	3E1-82505-10	EMBLEM, MAIN SWITCH EMBLEMA INTERRUPTOR PPAL.	1	1	1	
11	4GC-82590-10	WIRE HARNESS ASSY CONJUNTO DE CABLES	1	1		
	3NX-H2590-00	WIRE HARNESS ASSY CONJUNTO DE CABLES			1	
12	4GL-82530-00	STOP SWITCH ASSY INTERRUPTOR DE PARADA COMPLETO	1	1	1	
13	18A-82581-00	STAY, CORD CLAMP SOPORTE DE GRAMPA DE CABLE	1	1	1	
14	97007-06016	BOLT PERNO	1	1	1	
15	92907-06600	WASHER, PLATE ARANDELA	1	1	1	
16	97007-06012	BOLT PERNO	1	1	1	
17	92907-06600	WASHER, PLATE ARANDELA	1	1	1	
18	58K-21162-01-P4	HOLDER, CLUTCH CABLE SOPORTE DE CABLE DE EMBRAGUE	1	1	1	DRC2
	58K-21162-01-H9	HOLDER, CLUTCH CABLE SOPORTE DE CABLE DE EMBRAGUE	1	1	1	BG
	58K-21162-01-P5	HOLDER, CLUTCH CABLE SOPORTE DE CABLE DE EMBRAGUE	1	1	1	VDBM3
19	98507-06014	SCREW, PAN HEAD TORNILLO DE CABEZA CON PLANA	2	2	2	
20	92907-06600	WASHER, PLATE ARANDELA	2	2	2	
21	4AV-82310-10	IGNITION COIL ASSY BOBINA DE ENCENDIDO COMPLETA	1	1	1	
22	95307-06600	NUT TUERCA	2	2	2	
23	2VT-82370-00	PLUG CAP ASSY TAPON DE BUJIA COMPLT	1	1	1	

E6



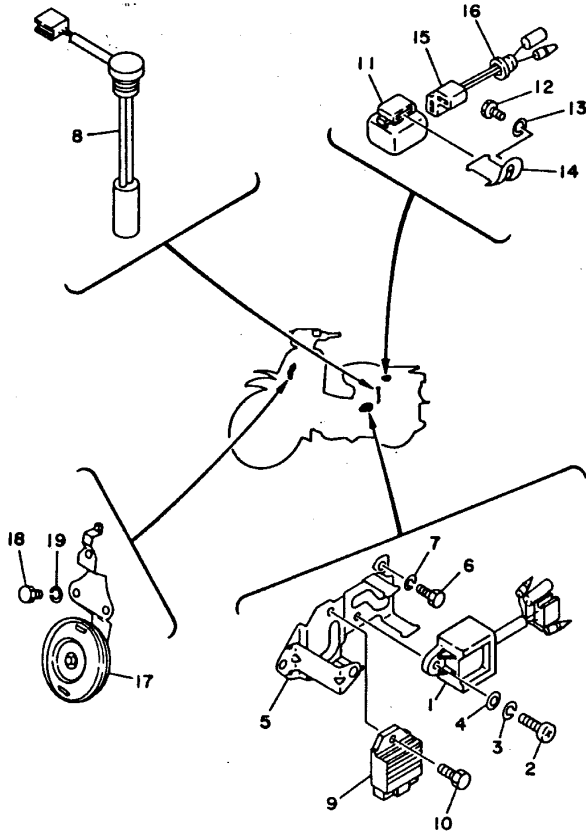
FWD
4GC3200-6350

FIG. 36 ELECTRICAL 1

EQUIPO ELECTRICO 1

REF. NO.	PART NO. CODIGO NO.	DESCRIPTION DESCRIPTION	4GC6	4GC5	3NX6	REMARKS OBSERVACION
24	296-82540-01	NEUTRAL SWITCH ASSY INTERRUPTOR NEUTRAL COMPL	1	1	1	
25	341-82543-00	GASKET EMPAQUE	1	1	1	

E7



4GC1600-3350

FIG. 37 ELECTRICAL 2

EQUIPO ELECTRICO 2

REF. NO.	PART NO. CODIGO NO.	DESCRIPTION DESCRIPTION	4GC6	4GC5	3NX6	REMARKS OBSERVACION
1	4GC-85540-10	C.D.I. UNIT ASSY UNIDAD C.D.I. COMPLETA	1	1	1	
2	98507-06020	SCREW, PAN HEAD TORNILLO DE CABEZA CON PLANA	1	1	1	
3	92907-06100	WASHER, SPRING ARANDELA	1	1	1	
4	92907-06600	WASHER, PLATE ARANDELA	1	1	1	
5	3KX-2172L-00	BRACKET 2 SOSTEN	1	1	1	
6	97007-06012	BOLT PERNO	2	2	2	
7	92907-06600	WASHER, PLATE ARANDELA	2	2	2	
8	3KX-85720-00	OIL LEVEL GAUGE ASSY MEDIDOR DE NIVEL DE ACEITE	1	1	1	
9	3AH-81960-00	RECTIFIER & REGULATOR ASSY RECTIFICADOR Y REGULADOR	1	1	1	
10	95027-06016	BOLT, FLANGE PERNO, DE BRIDA	1	1	1	
11	41G-83350-10	FLASHER RELAY ASSY RELE DE DESTELLADOR COMPL.	1	1	1	
12	97007-06014	BOLT PERNO	1	1	1	
13	92907-06100	WASHER, SPRING ARANDELA	1	1	1	
14	474-83352-00	BRACKET, FLASHER RELAY 1 SOPORTE RELE DESTELLADOR	1	1	1	
15	1W7-83355-00	CORD, FLASHER RELAY CABLE DE RELE DE DESTELLADOR	1	1	1	
16	90480-12013	GROMMET TAPON	1	1	1	
17	19M-83371-10	HORN BOCINA	1	1	1	
18	97007-06010	BOLT PERNO	2	2	2	
19	92907-06100	WASHER, SPRING ARANDELA	2	2	2	

NUMERICAL INDEX
INDICE NUMERICO

PART NO. CODIGO NO.	REF. NO.	PART NO. CODIGO NO.	REF. NO.	PART NO. CODIGO NO.	REF. NO.	PART NO. CODIGO NO.	REF. NO.	PART NO. CODIGO NO.	REF. NO.	PART NO. CODIGO NO.	REF. NO.
3NX-E5416-00	B-10	3NX-H3311-00	D-14	300-13505-03	B-5	1W7-15492-00	B-11	4GL-21268-00	C-4	4GL-22151-00	C-9
3NX-E5492-00	B-11	3NX-H3312-00	D-13	4GC-13610-00	B-5	156-15618-01	B-12	3AC-21268-00	C-4	3NX-22210-00	C-10
3NX-E5618-00	B-12		D-14	300-13613-03	B-5	5T9-15620-00	B-12	3E1-21308-00	C-4	296-22310-02-H9	C-9
3NX-E5620-00	B-12	3NX-H3320-00	D-13	300-13616-00	B-5	384-15635-00	B-13	3AC-21322-00	C-6	296-22310-02-P5	C-9
3NX-E8111-00	C-3	3NX-H3322-00	D-13	300-13621-10	B-5	2T4-15637-01	B-13	296-21345-00	C-4	296-22310-02-P6	C-9
3NX-F172K-00	C-8		D-14	300-13622-10	B-5	3K7-15641-00	B-12	18A-21397-00	C-4	148-22315-00	C-9
3NX-F172W-00	C-8	3NX-H3330-00	D-13	59L-14101-00	B-7	296-15644-00	B-12	296-21511-23-H9	C-5	517-23310-03-H9	C-12
3NX-F1751-00	C-8	3NX-H3333-00	D-13	18A-14103-00	B-7	517-15660-01	B-12	296-21511-23-P4	C-5	517-23310-03-P3	C-12
3NX-F1773-00	C-8		D-14	59L-14104-00	B-7	1W7-15664-01	B-12	296-21511-23-P5	C-5	517-23310-03-P4	C-12
3NX-F2117-00	C-9	3NX-H3340-00	D-14	18A-14106-00	B-7	296-15671-00	B-12	1LG-21513-00	C-5	296-23350-02	C-13
3NX-F2315-00	C-9	3NX-H4159-00	E-2	21W-14107-12	B-7	1W7-15676-00	B-12	1A8-21518-00	C-5	296-23361-02	C-12
3NX-F3445-00	C-11	3NX-H4510-10	E-4	45V-14112-25	B-7	56H-16110-00-30	B-13	116-21621-00	C-5	296-23362-09	C-12
3NX-F3455-00	C-11	3NX-H4514-00	E-4	296-14131-00	B-7	3E5-16150-02	B-13	3KX-2171L-00	C-6	296-23363-01	C-12
3NX-F4181-00	C-14	3NX-H4521-00	E-4	122-14135-00	B-7	122-16164-00	B-13	3KX-2171M-00	C-6	296-23364-02	C-12
1JM-F4710-00	D-2	3NX-H4523-00	E-4	45V-14141-12	B-7	517-16180-00	B-13	4GL-2171M-00	C-6	296-23371-02	C-12
3NX-F4723-00	D-2	3NX-H4524-00	E-4	193-14142-17	B-7	132-16346-00	C-2	297-21711-01-H9	C-6	296-23372-09	C-12
3NX-F4741-00	D-2	3NX-H4718-00	E-4	18A-14143-17	B-7	527-16520-10	B-13	297-21711-01-P4	C-6	296-23381-01	C-12
1JM-F4750-00	D-2	4GC-W2211-00-H9	C-9	307-14169-10	B-7	3E5-16521-00	B-13	297-21711-01-P5	C-6	296-23382-01	C-12
1JM-F4810-00	D-2	4GC-W2211-00-P3	C-9	127-14171-00	B-7	517-16524-10	B-13	18A-21712-00	C-6	118-23383-00	C-12
59L-F5371-00	D-6	4GC-W2211-00-P4	C-9	296-14184-01	B-7	517-16524-20	B-13	18A-2172K-00	C-8	3AC-23384-00	C-12
3NX-F5412-00	D-5	19M-W2472-00	C-15	2E9-14185-00	B-7	517-16524-30	B-13	3KX-2172L-00	E-8	18A-23391-00-H9	C-11
3NX-F5438-00	D-5	3AC-W2536-00	D-3	127-14186-00	B-7	517-16550-10	B-13	4GC-2172L-00	C-8	18A-23391-00-P7	C-11
3NX-F6240-00	D-7	4KN-W2536-11	D-5	12R-14191-00	B-7	517-16561-01	B-13	18A-2172W-01	C-8	1AJ-23397-10	C-11
3NX-F6241-00	D-7	5T0-11111-00	B-2	296-14198-00	B-7	527-16571-01	B-13	3AC-21721-00-H9	C-6	3E1-23406-00	C-13
3NX-F6242-00	D-7	463-11181-01	B-2	18A-14411-00	B-5	1W7-17211-12	B-15	3AC-21721-00-P4	C-6	22F-23411-01	C-11
59L-F6280-00	D-7	3E5-11162-00	B-2	35X-14412-00	B-5	1W7-17221-20	B-15	3AC-21721-00-P5	C-6	22F-23412-01	C-11
3NX-F6288-00	C-4	35X-11181-00	B-2	35X-14451-00	B-5	1W7-17231-30	B-15	18A-21722-00	C-7	22F-23414-01	C-11
59L-F6290-00	D-7	18E-11311-00	B-2	1W7-14453-01	B-5	1W7-17410-00	B-15	4GC-2173E-30	C-6	122-23416-00	C-11
3NX-F7111-00	D-9	4AW-11351-00	B-2	5U8-14454-00	B-5	1W7-17421-10	B-15	4GC-2173E-40	C-6	296-23445-00	C-11
3NX-F7112-00	D-9	1HA-11400-00	B-3	5U8-14457-00	B-5	296-17471-00	B-15	4GC-2173E-50	C-6	296-23455-00	C-11
3NX-F7114-00	D-9	1W7-11412-00	B-3	5U8-14458-00	B-5	58H-18101-04	C-3	4GC-2173F-30	C-6	3E1-23461-00	C-11
3NX-F7115-00	D-9	1HA-11422-00	B-3	1W7-14611-01	B-9	18A-18111-00	C-3	4GC-2173F-40	C-6	296-23463-01	C-11
3NX-F7211-01	D-9	14N-11610-00	B-3	3MT-14613-00	B-9	278-18127-01	C-3	4GC-2173F-50	C-6	18A-24110-01-H9	C-14
3NX-F7231-00	D-9	14N-11610-10	B-3	35X-14710-00	B-9	296-18140-02	C-2	18A-21731-00-H9	C-6	18A-24110-01-P6	C-14
3NX-F7311-00	D-9	14N-11610-20	B-3	109-14713-00	B-9	1W7-18511-01	C-2	18A-21731-00-P5	C-6	18A-24110-01-P7	C-14
3NX-F7411-00	D-10	18E-11631-00-98	B-3	4AW-14714-01	B-9	1W7-18512-02	C-2	18A-21731-00-P6	C-6	296-24181-00	C-14
3NX-F7412-00	D-10	527-11633-00	B-3	527-14753-50	B-9	2N8-18531-00	C-2	18A-21741-00-H9	C-7	4N0-24181-00	C-4
59M-F7413-00	D-10	18E-11635-00	B-3	59L-1490J-00	B-7	2N8-18540-00	C-2	18A-21741-00-P5	C-7	4GC-24240-30	C-14
3NX-F7414-00	D-10	18E-11636-00	B-3	1W7-15111-03	B-10	136-18542-00	C-2	18A-21741-00-P6	C-7	4GC-24240-40	C-14
3NX-F7417-00	D-10	1W7-11651-00	B-3	1W7-15121-03	B-10	296-18561-00	C-2	18A-21751-01	C-8	4GC-24240-50	C-14
59L-F7430-00	C-9	2Y1-11681-00	B-3	300-15128-00	B-10	296-18562-01	C-2	18A-21752-00	C-8	15K-24260-03	C-14
23A-F7432-00	C-9	18E-13101-00	B-4	5T9-15316-01	B-10	4GC-21110-00-H9	C-4	18A-21770-01	C-8	3L5-24268-00	C-14
59L-F7433-00	C-9	2T5-13124-00	B-4	5U8-15318-01	B-10	4GC-21110-00-P3	C-4	18A-21773-01	C-8	18A-24317-00	C-14
3NX-F8100-00	C-4	384-13138-00	B-4	517-15362-02	B-11	4GC-21110-00-P4	C-4	18A-21778-00	C-4	164-24319-00	C-8
3NX-H2122-00	E-6	296-13147-00	B-4	2N8-15411-00	B-11	58K-21162-01-H9	E-6	4GC-21781-70	C-6	3AC-24500-00	C-14
3NX-H2590-00	E-6	384-13181-02	B-4	517-15416-01	B-10	58K-21162-01-P4	E-6	180-22117-00	C-9	4X8-24512-00	C-14
3NX-H3310-00	D-13	384-13174-00	B-4	517-15421-01	B-11	58K-21162-01-P5	E-6	102-22123-00	C-9	3AJ-24523-00	C-14
3NX-H3311-00	D-13	53F-13178-00	B-4	4AW-15451-00	B-11	527-21165-01	C-15	109-22141-01	C-9		

NUMERICAL INDEX
INDICE NUMERICO

PART NO. CODIGO NO.	REF. NO.	PART NO. CODIGO NO.	REF. NO.	PART NO. CODIGO NO.	REF. NO.	PART NO. CODIGO NO.	REF. NO.	PART NO. CODIGO NO.	REF. NO.	PART NO. CODIGO NO.	REF. NO.
3AJ-24534-00	C-14	122-25438-10	D-5	296-28349-01	D-11	3E1-84124-10	E-2	90159-05028	D-7	90209-15178	B-15
2MM-24602-02	C-14	3E1-26210-10-98	D-7	296-28373-00	D-11	2E9-84131-00	E-2		E-2	90209-15179	B-15
2MM-24612-00	C-14	3E1-26215-00-33	D-7	18Y-81313-M0	D-12	2E9-84132-00	E-2	90159-05131	C-9	90209-15180	B-15
214-24708-00	C-15	3E1-26240-10	D-7	3AH-81960-00	E-8	317-84147-30	E-2	90159-06013	C-6	90209-20159	B-3
3AC-24710-00	D-2	116-26241-00	D-7	34U-82110-10	E-6	4GC-84159-00	E-2	90159-06016	C-11	90215-11012	C-11
1W7-24718-01	C-15	116-26242-00	D-7	268-82122-00	E-6	18Y-84510-00	E-3	90159-06056	B-6	90240-06052	C-9
1AJ-24723-00	D-2	3E1-26244-00	D-7	1E6-82131-00	E-6	122-84514-30	E-3	90159-06093	C-6	90249-12008	D-8
1AJ-24724-00	D-2	3E1-26245-00	D-8	55K-82150-01	E-6	296-84551-00-35	E-4	90167-03004	D-7		D-9
214-24726-A0	C-15	3J0-26261-00	D-7	116-82151-00	E-6	330-84551-00-35	E-3	90170-10105	B-4	90280-03017	B-3
296-24726-00	D-2	3J0-26262-00	D-7	4AV-82310-10	E-6	201-84716-00	E-3	90170-18165	D-6	90282-04064	B-13
298-24728-A0	C-15	360-26266-00	D-7	2VT-82370-00	E-6	164-84721-00	E-3	90171-10004	D-4	90338-05056	C-4
19M-24731-00	C-15	2T5-26267-00	D-7	3E1-82505-10	E-6	164-84723-00	E-3	90171-12005	D-6	90338-06143	C-12
298-24738-A0	C-15	3J0-26272-00	D-8	4GC-8251A-00	E-6	201-84724-00	E-3	90173-06004	C-11	90338-07043	C-4
23N-24741-00	C-15	2T5-26273-00	D-7	4GL-82530-00	E-6	3T5-85520-M1	D-12	90175-06013	D-8		C-9
298-24748-00	C-15	3E1-26274-00	D-7	296-82540-01	E-7	4GC-85540-10	E-8		D-9	90340-12005	B-10
298-24750-00	D-2	296-26288-01	C-4	341-82543-00	E-7	4GC-85550-00	D-12	90176-10073	C-10	90387-062F5	B-5
4GC-2478G-00	C-15	1Y0-26290-00	D-7	18A-82581-00	E-6	4GC-85580-01	D-12	90179-08411	D-8	90387-10277	D-4
1AJ-24810-00	D-2	1Y0-26290-10	D-7	4GC-82590-10	E-6	2AL-85580-M0	D-12		D-9	90387-12412	D-6
296-24830-00	C-15	3E1-26311-04	D-7	296-82593-00	D-8	3KX-85720-00	E-8	90179-07381	B-2	90387-18143	D-6
109-25104-10	D-3	18A-26312-01	D-7	59L-82620-01	E-5	90101-06278	D-5	90179-08639	D-5	90387-20603	B-3
617-28111-00-95	D-3	3E1-26321-03	D-7	18A-83310-10	D-13		D-13	90179-12659	B-13	90401-10029	B-4
195-25115-00	D-3	3E1-26331-00	D-8	1M3-83311-10	D-13	90101-06384	B-10	90179-16190	B-14	90401-10035	C-12
322-25118-00	D-4	3E1-26341-00	D-8		D-14	90101-08672	D-5	90179-25033	C-11	90413-05015	B-7
18A-25121-00-35	D-3	3E1-26393-00	D-8	18A-83312-00	D-13	90101-10776	C-10	90179-25050	C-11	90430-04004	B-4
296-25135-00	D-3	266-27111-10	D-9		D-14	90105-08223	C-4	90183-04047	D-11	90430-12227	B-10
109-25136-00	D-3	517-27112-01	D-9	18A-83320-10	D-13	90105-10701	C-4	90185-10091	C-9	90445-05390	B-7
102-25137-00	D-4	102-27114-A0	C-15	18A-83322-00	D-13	90109-06024	C-15	90201-05029	C-14	90445-070A7	B-8
296-25138-00	D-3	116-27114-00	D-9		D-14		D-2	90201-061A5	D-6	90445-070A8	B-8
183-25149-00	D-3	128-27114-00	C-15	18A-83330-10	D-13	90109-063F6	C-2	90201-06380	D-11	90445-08170	E-6
3E1-25155-00	D-3	109-27115-00	D-9	18A-83340-10	D-14	90109-08034	D-9	90201-06778	B-5	90445-091K4	C-14
296-25181-02	D-4	3AB-27211-01	D-9	41G-83350-10	E-8	90109-08183	D-6	90201-07076	D-3	90460-37026	B-5
401-25181-01	D-6	18A-27231-00	D-9	474-83352-00	E-8	90109-08686	D-10	90201-08310	C-11	90467-08003	C-14
18E-25304-00	D-5	18A-27311-10	D-9	1W7-83355-00	E-8	90109-08692	C-12	90201-086P8	C-4		C-8
18A-25311-00-35	D-5	18A-27411-01	D-9	19M-83371-10	E-8	90116-06282	D-13	90201-10140	C-10	90468-02033	B-4
102-25315-00	D-5	18A-27412-00	D-10	3E1-83510-10	D-15	90116-07035	B-2	90201-12535	B-3	90468-10050	C-15
31J-25321-00-35	D-5	441-27413-01	D-10	3E1-83515-00	D-15	90149-04135	B-4	90201-12575	C-3	90468-12007	D-6
3Y6-2533A-01	D-3	18A-27414-00	D-10	122-83516-10	E-6	90149-05119	E-5	90201-126A7	C-10	90468-16090	B-13
	D-5	18A-27417-00	D-10	4N0-83516-00	D-15	90149-06011	C-14	90201-20266	B-15	90468-26046	B-12
3Y6-25351-00	D-3	120-27430-02	C-9	1LM-83520-50	D-15	90149-06154	C-4	90201-20269	D-3	90480-10005	B-4
	D-5	120-27431-00	C-9	3E1-83550-00	D-15	90149-06157	B-10	90201-20279	C-9	90480-12013	E-3
1T9-25355-00	D-5	120-27432-02	C-9	122-83922-01	E-5	90150-06032	C-2	90201-20685	B-15		E-4
18A-25364-00	D-5	120-27433-00	C-9	18A-83941-00	E-5	90151-05055	D-12	90202-05193	C-14		E-8
296-25366-01	D-5	4VL-28100-00	C-4	503-83956-10	E-5	90152-05008	C-13	90206-19027	B-12	90480-12314	B-5
18A-25371-00	D-6	18A-28311-00	D-11	18A-83975-02	E-5	90153-06063	C-11	90208-12015	B-13	90480-16112	E-3
102-25387-03	D-5	3E5-28315-00	D-11	3E1-84112-10	E-2	90155-08002	C-13	90208-16019	B-14		E-4
127-25388-01	D-6	116-28318-01	D-11	248-84114-00	E-2	90159-04191	E-6	90208-08018	C-5	90480-21038	B-10
102-25389-00	D-6	18A-28322-00	D-11	3E1-84115-10	E-2	90159-05022	D-7	90209-10131	E-5	90480-22196	C-8
102-25412-00	D-5	296-28329-00	D-11	3E1-84120-10	E-2	90159-05026	C-5	90209-12280	B-13	90501-06611	D-7

M2

NUMERICAL INDEX
INDICE NUMERICO

PART NO. CODIGO NO.	REF. NO.	PART NO. CODIGO NO.	REF. NO.	PART NO. CODIGO NO.	REF. NO.	PART NO. CODIGO NO.	REF. NO.	PART NO. CODIGO NO.	REF. NO.	PART NO. CODIGO NO.	REF. NO.
90501-10245	D-9	92907-08100	B-9	93451-08094	B-13	95707-08500	C-4	98507-09016	C-5		
90501-10802	B-13		D-6	93503-16003	C-11		D-14		D-11		
90501-12088	B-13	92907-08200	D-6	93505-08030	B-13	97002-08012	E-4	98507-08020	C-11		
90506-08122	C-3	92907-08400	C-5	93509-32012	B-15	97007-08010	C-4		E-8		
90506-10184	C-2	92907-08600	C-11	93604-22050	C-2		E-8	98507-06030	B-5		
90506-15260	D-3		C-14	93608-14081	C-2	97007-08012	C-15	98507-06035	B-10		
	D-5		C-15	93700-04002	C-12		C-6		B-11		
90506-20041	D-9		D-2	93700-06004	C-13		E-3	98507-06040	B-11		
90506-25047	D-9	92907-10100	C-4	93812-13022	B-15		E-6		D-11		
90506-29054	D-9	92907-10600	C-10	94122-17271	D-3		E-8	98507-06045	B-10		
90508-26136	B-12		C-12	94125-17273	D-5	97007-08014	E-8		B-11		
90508-26393	D-3		D-10	94222-17269	D-3	97007-08016	E-6	98507-06050	B-10		
90508-320A8	C-3	93101-10001	B-4		D-6	97007-08030	B-6	98507-06100	B-10		
90560-10292	D-3	93101-12004	C-3	94225-17309	D-3	97007-08040	B-5	98507-08010	B-11		
90560-12145	D-5	93102-20143	B-15		D-6	97007-08045	B-5	98511-04012	D-12		
90560-17146	B-13	93103-25098	B-3	94322-17078	D-4	97007-08018	C-11	98511-04025	D-12		
91401-16015	C-10	93103-32099	B-3		D-6		C-14	98802-05100	B-7		
91401-20012	D-9	93104-07003	D-3	94412-17496	D-4		D-2	99001-03800	B-13		
91401-20015	D-6	93104-11053	B-11	94414-17003	D-6	97007-08020	B-9	99001-10600	C-2		
91401-20020	D-4	93105-47007	D-3	94580-52100	D-6		C-15		C-3		
91401-30025	D-6	93106-20001	D-3	94680-52001	D-6	97017-08025	B-12	99002-09600	C-2		
91609-30014	B-4	93106-30004	D-5	94701-00108	B-2	97027-08020	C-3	99008-15400	B-12		
91609-40016	C-2	93108-15001	B-12	94701-00175	B-2	97027-10020	D-10	99008-19400	B-12		
91701-05055	C-15	93210-09729	C-2	95027-08016	E-8	97301-05016	C-14	99009-20400	D-3		
92501-06010	E-4	93210-14104	D-4	95302-06600	E-4	97301-08016	C-15	99530-10114	B-11		
92901-04100	B-7	93210-18023	B-3	95307-05600	B-9	98501-03028	D-13	99530-12016	B-10		
	D-12	93210-19123	B-11	95307-08600	C-15		D-14				
	E-3	93210-26240	B-4		C-5	98501-03030	D-13				
92901-06100	C-15	93210-29282	B-4		D-2		D-14				
	E-4	93210-41041	D-5		D-3	98501-03038	D-13				
92907-03100	B-5	93210-98202	B-13		D-5		D-14				
92907-05600	B-9	93306-00438	D-5		D-6	98501-04006	D-12				
	C-9	93306-20301	B-15		E-3	98501-04010	B-7				
92907-06100	B-5	93306-20401	B-15		E-6		D-12				
	D-2	93306-20517	B-3	95307-06700	D-13		E-3				
	D-6	93306-30003	D-3	95307-06730	B-9	98501-04018	B-7				
	E-8	93306-30102	D-5		C-13	98502-05030	B-7				
92907-06200	D-13	93306-30103	D-5		C-5	98503-03008	C-14				
92907-06600	B-5	93310-11268	B-3		D-6	98507-03008	B-5				
	C-11	93310-420F2	B-3		D-7	98507-05014	C-9				
	C-15	93315-23208	C-2		D-9	98507-05020	B-4				
	C-5	93320-41202	B-15	95307-12700	C-10	98507-05025	E-5				
	C-6	93410-20038	B-15	95317-12600	B-3	98507-05035	B-4				
	D-11	93430-07012	B-4	95607-05100	E-5		E-5				
	D-9	93430-12008	D-9	95607-06200	D-2	98507-06008	E-5				
	E-5	93440-15012	B-15	95607-08200	B-9	98507-06012	B-15				
	E-6	93450-13022	B-3		C-11		C-6				
	E-8	93450-28049	B-15	95707-06500	D-13	98507-06014	E-6				